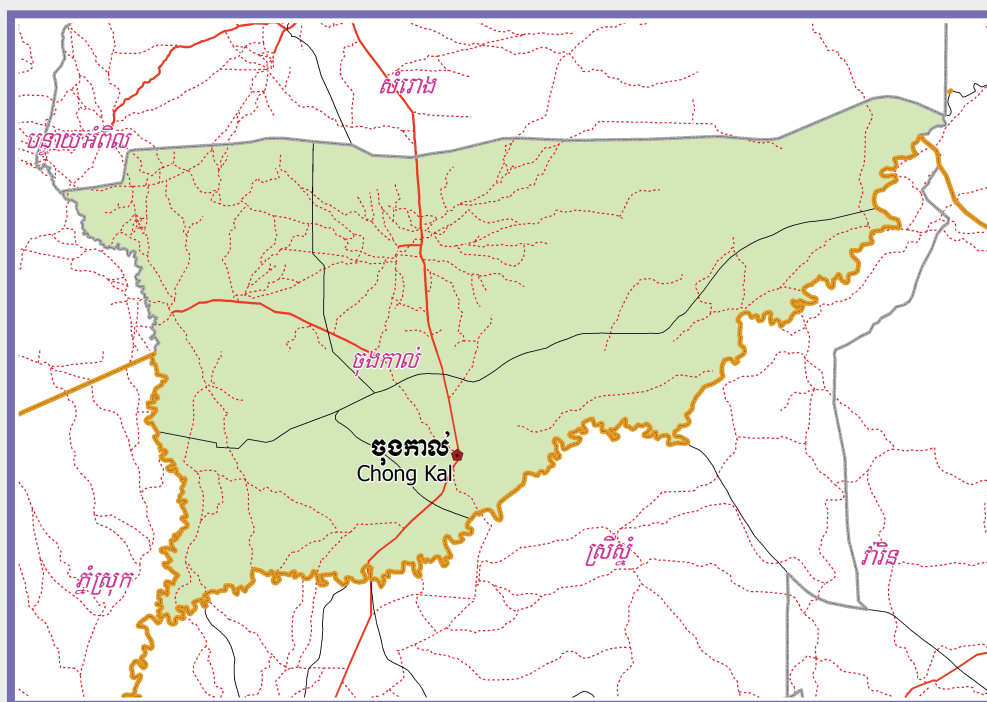


**KINGDOM OF CAMBODIA**  
**Nation Religion King**



**National Committee for Sub-National  
Democratic Development (NCDD)**



**CHONG KAL DISTRICT DATA BOOK 2009**

**District Code Nr: 2203**  
**Otdar Meanchey Province**

**October 2009**



# **Chong Kal District Data Book 2009**

District Code Nr: 2203

**Otdar Meanchey Province**



# Table of Contents

List of Abbreviations .....	i
Glossary.....	ii
Preface .....	vi
Introduction .....	vii
SECTION A: GEOGRAPHY .....	1
1 Administration and Infrastructure.....	3
2 Land Use and Natural Resources.....	5
3 Geography .....	7
3.1 Land Area .....	7
3.2 Distances between Offices .....	7
SECTION B: DISTRICT PROFILE .....	9
1 General Information .....	11
1.1 Population of the District.....	11
1.2 Occupations .....	12
1.3 Property .....	14
2 Infrastructure and Economy.....	16
2.1 Roads in meters over 3 years.....	16
2.2 Sewerage Pipes in meters over 3 years.....	16
2.3 Drainage and Bridges .....	16
2.4 Services in the District .....	16
2.5 Agriculture.....	17
3 Social Aspects .....	28
3.1 Education .....	28
3.2 Health.....	34
3.3 Water and Sanitation .....	36
3.4 Vulnerable groups.....	40
3.5 Migration .....	42
4 Natural Resources and Environment (NRE).....	44
4.1 Families involved with NRE issues over 3 years .....	44
4.2 Percentage of Families involved with Natural Resource issues, by Commune, for 2008 .....	44
4.3 Percentage Houses with access to Garbage collection and Families affected by environmental Pollution, by Commune, for 2008 .....	44
4.4 Percentage Families using chemical Fertilizer and chemical Pesticides, by Commune, for 2008 ..	44
5 Administration and Security .....	45

5.1	Birth Registration across 3 years.....	45
5.2	Number of unregistered Infants born in 2008, by Commune .....	45
5.3	Registered criminal Cases over 3 years .....	45
5.4	Registered criminal Cases per 10,000 people, by Commune, for 2008.....	45
5.5	Number of registered Land Disputes, by Commune, in 2008 .....	45
6	Gender .....	46
6.1	Registered Domestic Violence over 3 years.....	46
6.2	Percentage of registered cases of Families experiencing domestic Violence, by Commune, in 2008 .....	46
6.3	Women's involvement over 3 years.....	46
6.4	Percentage of Female Participants in Civil Society and of 18-60 year women with uncertain Jobs, by Commune, in 2008 .....	47
6.5	Female-headed Households over 3 years.....	47
6.6	Percentage female-headed Households and with Children of less than 5 years old, by Commune, in 2008 .....	47
7	Indigenous People in the District .....	48
7.1	Ethnic Minorities in the District over 3 years.....	48
7.2	Other Minorities in the District over 3 years.....	48
	SECTION C: PLANS AND PROJECTS .....	49
8	Priorities and Plans .....	51
8.1	Priorities of Commune Councils for 2009 in the District by Sector .....	51
8.2	Temporary Agreements by Commune, for 2009 .....	55
8.3	Outputs, estimated and actual costs of C/S Fund Projects between 2005 and 2008, by Commune .....	65
8.4	Total Expenditure on C/S Fund Projects by sector and commune between 2005 and 2008.....	66
8.5	Actual 2009 C/S Fund projects by Commune .....	66
9	District level Projects from 2006 to 2009 .....	67
9.1	District Initiative Infrastructure Projects from 2006 to 2009 .....	67
9.2	District Initiative Service Projects from 2006 to 2009 .....	68
9.3	Inter Commune Council Projects in 2008 and 2009 .....	69
9.4	Other Projects in 2008 and 2009 .....	69
	SECTION D: SERVICES AND ORGANIZATIONS .....	73
10	Infrastructure.....	75
10.1	Length of and Expenditure on Roads in 2008, by District .....	75
10.2	Scale of and Expenditure on Irrigation in 2008, by District.....	75
10.3	Power Supply in 2008, by District .....	76
11	Health Facilities.....	77

11.1 Health Facilities in the Province, by Operational District.....	77
11.2 Health Facilities and Staff in the province, by Operational District.....	78
11.3 Deliveries in 2007 in the Province, by Operational District.....	78
12 Education .....	79
12.1 Schools, Classes, Students, Staff, for for all levels, for 2007/2008 by District.....	79
12.2 Characteristics of Schools and School Principals for 2007/2008 by Commune .....	79
12.3 Enrolment by Level of Education, 2006/2007 by Commune .....	79
12.4 Enrolment by Level of Education, 2007/2008 by Commune .....	80
12.5 Aspects of Enrolment for 2007/2008 by Commune.....	80
12.6 School Buildings for all schools in the District for 2007/2008, by Commune .....	80
12.7 Conditions of Classrooms and Existence of Separate School Office and Library, by Commune	80
12.8 Community Participation and Financing across all schools in the District for 2007/2008 by Commune .....	81
12.9 Percentage Student Flow Rates and Graduation by level 2006/2007, by Commune .....	81
13 Staff and Resources at the District .....	82
13.1 District Councilors elected in 2009 .....	82
13.2 Committees of the Council.....	82
13.3 Board of Governors.....	82
13.4 Offices under Sala Krong, Sala Srok and Sala Khan .....	83
13.5 Municipality/District/Khan line offices.....	83
13.6 Properties and Equipment of District Administration .....	83
13.7 Registered Revenue of the District Administration in 2008 .....	84
13.8 Services in the District .....	84
13.9 Civil Society Organizations active in the District.....	85
13.10 Private Sector Organizations.....	86
SECTION E: POVERTY DATA .....	87
14 Data on Poverty .....	89
14.1 Predicted Poverty Rates for 2009, by commune .....	89
14.2 Poverty data from survey.....	89





## List of Abbreviations

#	Number
AGR	Agriculture
BR	Birth Registration
C. Pilot	Piloted Commune
C/S	Commune / Sangkat
CBO	Community-Based Organization
CDB	Commune Database
CDPD	Commune Development and Planning Database
CIP	Commune Investment plan
CLTS	Community Led-Total Sanitation
Comm.	Commune
Com Cov	Commune Covered
CPA	Complementary Package of Activities
CPS	Community Preschool
CCWC	Commune Committees for Women and Children
DANIDA	Danish International Development Agency
DDLG	Democratic Development and Local Governance Project (EC-UNDP)
DFID	Department For International Development (UK)
DIP	District Initiative Project
DIS	District Information System
District PDRD	District Office of Rural Development
District WP	District Work Plan
DIW	District Integration Workshop
DoLA	Department of Local Administration
Dr	Doctor
DWRM	District Office of Water Resource and Meterology
ECD	Early Childhood education (part of PE)
EMIS	Education Management Information System
Event IC	Celebration of International Days
FDH	Former District Hospital
GTZ	German Society for Technical Cooperation (Gesellschaft für Technische Zusammenarbeit GmbH)
Ha	Hectare
HC	Health Center
HC (NB)	Health Center (no building)
HH	Headed Household
HSI	Intervention for Health
HP	Health Post
HW	Hand Washing
ICC	Inter Commune Council
IFAD	International Fund for Agricultural Development
IND	Industry
Inter-commune	Inter-Commune Project Management Committee or Inter-commune project
IO	International Organization
LASED	Land Allocation for Socio-Economic Development
LGCR	Local Governance for Children's Rights
M&E	Monitoring and Evaluation
MA	Medical Assistant
MoEYS	Ministry of Education, Youth and Sports
MoH	Ministry of Health

MoP	Ministry of Planning
MPA	Minimum Package of Activities
MW1	Primary Midwives
MW2	Secondary Midwives
n/a	Not available
NCD	National Contracts Database
NCDD	National Committee for Sub-National Democratic Development
NGO	Non-Governmental Organization
NRML	Natural Resources Management and Livelihood
NU1	Primary Nurse
NU2	Secondary Nurse
OD	Operational District
ODF	Open Defecation Free
Ope. Costs	Operational Costs
Others	Other Staff
PBW	Public Works
PDoEYS	Provincial Department of Education, Youth and Sport
PDRD	Provincial Department of Rural Development
PDWRM	Provincial Department of Water Resource and Meteorology
PE	Parenting Education
PHAST	Participatory Hygiene and Sanitation Transformation
PHD	Provincial Health Department
PID	Project Information Database
PMC	Project Management Committee
Pop 04-05	Population Covered 2004 or 2005
PSDD	Project to Support Democratic Development through Decentralization and Deconcentration
RRD	Rural Road Development
RH	Referral Hospital
RILGP	Rural Investment and Local Governance Project
RPRP	Rural Poverty Reduction Program
RuLIP	Rural Livelihoods Improvement Program
SIDA	Swedish International Development Cooperation Agency
SPPA	Senior Provincial Program Advisor
TBA	Traditional Birth Attendant
UNDP	United Nations Development Project
UNICEF	United Nations Children's Fund
Vil	Village
Vil Cov	Village Covered
VIL-HC	Distance from Village to Health Center
WASH	Water, Sanitation and Hygiene
WRM	Water Resource and Meteorology

## Glossary

**C/S Fund:** The Commune/Sangkat Fund is established and managed by the Government of Cambodia to provide financial support for development projects and administrative costs of Commune/Sangkat Councils. The amount is determined as a percentage of the National Budget (for 2009: 2.8% over the 2008 budget) and is expected to increase gradually over the years. The total 2009 budget under this fund is \$ 27,643,902 (of which \$ 19,272,170 is for Development Projects and \$ 8,371,731 for Administration). Under the Rural Investment and Local Governance Project the World Bank currently reimburses the costs of development projects if these meet the Bank's criteria.

**CDB:** the Commune Data Base is a national database, compiled by the Ministry of Planning, on the basis of detailed questionnaires, completed at village and commune level, which are then sent to the Departments of Planning for data entry. The most recent round of data collection took place at the end of 2008 (and is reflected in the District Data Books).

Commune, District and Provincial Profiles can be generated from this database and should be available from provincial Departments of Planning.

**CDPD:** the Commune Development and Planning Database is a database maintained by Departments of Planning and Ministry of Planning, recording proposed activities as determined and prioritized by Commune and Sangkat Councils; the Temporary Agreements between these councils and supporting agencies, as decided at District Integration Workshops and details on projects that actually take place at commune, district and provincial levels.

**CIP:** The Commune Investment Plan is a rolling three-year plan, developed and decided by the Commune or Sangkat Council. It sets priorities and identifies the projects proposed for the years to come.

**Commune and Sangkat (C/S):** the Communes (in rural areas) and Sangkats (in urban areas) are the lowest and smallest units of local government. Councils are elected directly, once in five years, for the 1417 Communes and 204 Sangkats. In the C/S there are 14,119 villages, which have Village Chiefs, but don't constitute a formal level of local government.

**DIP:** the District Initiative Project is jointly supported by the MDLF (Multi-Donor Livelihood Facility (supporting the NRM&L Program)) and PSDD. In 2009 it covers 106 districts, 60% of the total in the country, with a budget of \$ 3.2 million. It is focused on capacity development in planning, democratic development, public competitive procurement, financial management and service delivery.

**DIS:** The District Information System is a national database maintained by NCDD, recording resources, staff, revenue, infrastructure and equipment available in the 193 Districts and Khans throughout the country. The last update took place in July 2009.

**District, Municipality and Khan** constitutes the third level of Government in Cambodia. There are 159 rural Districts, 26 Municipalities and 8 Khans of Phnom Penh Capital. They all have Councils which were, for the first time, elected in May 2009, by the Commune/Sangkat Councilors. These councils have a mandate for 5 years.

**DIW:** District Integration Workshops are held between July and October, to bring Commune/Sangkat Councils, looking for support for their projects, together with the governmental and non-governmental agencies that may provide support.

**ICC:** Inter Communes Council projects are executed in 10 provinces under the Democratic and Decentralized Local Governance Project (DDLG). This five year project (2006-2010) is executed by Ministry of Interior and funded by the European Commission and UNDP. The project focuses on improving dialogue partnership and accountability; create a network of Commune Councils at the provincial and national level and support and contribute to local area development for poverty reduction. The work under the ICC component supports investments and services formulated through inter-commune dialogue and planning.

**MEDICAM:** A non-profit and non-partisan membership organization for NGOs active in Cambodia's health sector. It is the primary networking agency for health-related NGOs.

**NCDD:** the National Committee for sub-National Democratic Development is the inter-ministerial body charged with the implementation of the Organic Law (a key legislative document, adopted in 2008, outlining the envisaged decentralization). NCDD also channels substantial financial assistance by a number of Development Partners, to projects and programs at various levels. This amounted to over \$ 91 million in 2008. More information at: [www.ncdd.gov.kh](http://www.ncdd.gov.kh). This website also provides access to reports, manuals, legal documents, details on projects and more.

**OD:** the Operational Districts are the districts as defined and used by the Ministry of Health. These do not coincide with the 193 (Administrative) Districts and Khans, as used by all other RGC agencies. The Operational Districts are usually larger, and so there are 77 Operational

Districts against 193 administrative Districts and Khans. However they do fit within the boundaries of administrative provinces.

**PID:** The Project Information Database is the database maintained by NCDD at national and sub national level, to follow all aspects of projects by Commune and Sangkat Councils, including the C/S Fund projects

**Provincial Investment Fund (PIF)**

The Provincial Investment Fund is allocated to all Provinces and Municipalities according to a population based formula. Part of the fund is earmarked for support to planning activities of the Provincial / Municipal Department of Planning; and to gender mainstreaming activities of the Provincial Department of Women's Affairs. The remaining "un-earmarked PIF" is allocated by PRDC to sectoral technical departments against established criteria and in response to proposals with prioritisation taking into account: priorities formulated by the CS Councils and aggregated by District into District Priority Activities Matrices (DPAM); alignment with national planning and poverty alleviation criteria, complementarity with other planned activities; and performance of the Department concerned in implementation of activities in previous years. With this provisional allocation, the Department then programs activities through the District Integration Process. Finally, the agreed activities, plus support costs amounting to no more than 25% of the total, are included in a sub-contract signed between PRDC and the Department, pursuant to the overall PSDD contract signed between NCDD and PRDC. Total budget has been around \$ 2 million per year.

**Province:** the 23 Provinces and Phnom Penh Capital City represent the 2<sup>nd</sup> layer of government. They vary in size, from very small, like Kep (approx. 36,000 people) and Pailin (approx. 70,000 people), or large but with small populations, like Mondulkiri (over 60,000 people), and Ratanakiri (over 153,000) to densely populated and large, like Kampong Cham (over 1.7 million people) and Kandal (approx. 1.4 Million people).

**PSDD:** the Project to Support Democratic Development through Decentralization and Deconcentration is funded by DFID (UK), SIDA (Sweden) and UNDP and runs from 2006 till the end of 2010 (including a one year extension). Annual budgets range from \$ 11 million to over \$ 18 million. The project provides core technical support to NCDD and to the provinces, financial support to the C/S Fund, District Initiative, Provincial Investment Fund and capacity building support through training, studies and advisory services.

p

**RILGP:** The Rural Investment and Local Governance Project is a World Bank funded project that provides substantial support to C/S Fund projects and to developing the required infrastructure, policies, systems and skills. It started in 2003 with a Loan for \$ 22 million for 2003-2007 and was then extended with a Grant of \$ 36 million for the period of 2007-2010. Discussions about a possible RILGP 2 are taking place between RGC and the World Bank.

**RPRP:** the Rural Poverty Reduction Project is a seven year project from 2004 till 2010, funded by IFAD and UNDP and implemented through the Ministry of Agriculture, Forestry and Fishery, supported by the Ministry of Interior and facilitated by NCDD. The project is active in the provinces Prey Veng and Svay Rieng and focuses on 120,600 households below poverty line. The objective is poverty reduction with the active participation of the poor through improved livelihoods, Strengthened capacity, Sustainable farming systems and natural resource management, new and/or rehabilitated infrastructure development, increase access to technology, services and markets for their economic and social development.

**RULIP:** the Rural Livelihoods Improvement Project is implemented by the Ministry of Agriculture Forestry and Fisheries (MAFF)' Project Support Unit- PSU, with the NCDD playing the role of cooperating agency. Funded by IFAD and UNDP, the project will run till 2014. The target group consists of poor households who have little or even no land, few livestock or other assets and often many dependents. The main goal of the project is to directly or indirectly improve the livelihood systems, food security and incomes of a total of 33,900 rural poor, ethnic minority and female headed households in targeted village of Kratie, Preah Vihear and Ratanakiri provinces in a sustainable manner.

**Seth Koma:** The UNICEF funded Seth Koma program focuses on measurable action for children and women. During 2006 -2010 it is implemented in six provinces. Government and UNICEF pursue a set of inter-related goals, addressing critical stages of the life cycle of the child: a) Mothers have safe pregnancies and deliveries and healthy newborns; b) best possible start in life of infant; c) Children enter schools at the right age of six years; d) Children are protected from exploitation, abuse, violence, discrimination and other risks; and e) Youth and adolescents acquire life skills, express their views, participate in the decisions.

## Preface

The Government of Cambodia attaches great importance to optimal use of scarce resources and to participatory planning and management at all levels. The Organic Law which was adopted in 2008 provides the legal context for further steps towards improving and decentralizing planning, management and monitoring, and towards greater accountability and transparency of institutions at sub-national levels.

The Government has established elected Councils at the sub-national levels, and we will progressively give them the responsibilities, together with the human and financial resources, to deliver a wide range of public services. They will be more democratic, more efficient, more transparent and accountable, better at addressing gender and other inequalities, and at fighting corruption. We recognize that development does not come from government alone; it needs the involvement of citizens, civil society and the private sector, and the new system will facilitate this. A central element in this process is the availability of information on any aspect of development to all concerned parties. The newly elected Councillors at District and Khan level, line departments operating at these levels, but also NGOs, Development Partners, Commune Councillors and citizens throughout Cambodia need information on problems and requirements, resources and opportunities, services and agencies, plans and projects. They will need such information to better understand the present situation, set targets for the future, monitor progress, know what others are doing and to apply resources wisely and this is the reason the District Data books will be so valuable.

The District Data Books are a major step towards full transparency and towards informed planning and decision-making. They provide all available data at District, Khan, Commune and Sangkat level in easily accessible formats, in Khmer and English, through over 16,000 printed copies, CD-ROMs and the NCDD website.

This is the first time in Cambodia (and possibly in South East Asia) that such detailed information is made so widely available and NCDD should be commended for the hard work that has gone into this. We also thank the Ministry of Planning, which provided the detailed data of the Commune Data Base, the sectoral ministries and provincial authorities who contributed data and the Development Partners who provided financial support.

It is our sincere hope that the publication of the District Data Books will strengthen capacities, especially at district levels, for evidence-based development planning. We also hope that this information will deepen the understanding among Ministries, Provincial Authorities, Development Partners, NGOs and research agencies of the realities at commune and district levels.

We call upon all to use and distribute this information, complement or correct where appropriate and to contribute new data in the years to come.

**Sar KHENG**

Deputy Prime Minister, Minister of Interior and Chairman of NCDD

## Introduction

### Purpose

The purpose of the District Data Books is to bring together information on any aspect of life and development of Districts, Khans, Communes and Sangkat, together and make this widely available. The primary targets are the newly elected District Councilors, district level line departments, provincial agencies, Development Partners and NGOs operating at this level. They need detailed knowledge on current living conditions, natural resources, infrastructure, agriculture and other economic activities, current service levels, past and planned projects and available resources.

While much information exists on many of the above aspects, it is often hard to access that information and much is lost to reports, databases and statistics that are not widely shared. Data are often only available in one language and often out-of-date, and many reports cover only one sector or region.

We found that these problems are especially acute at the district level. Now that Districts are becoming a much more significant level of local government and development planning, there is an urgent need for wide-ranging data to be used for setting base-lines, planning and prioritizing, monitoring and learning.

### Approach

We have attempted to identify and compile all available statistics, reports, maps and other data at district and/or commune level. From this we have selected information that is available for all or most districts, reasonably reliable and up-to-date, sufficiently detailed and of possible interest to development planners, decision makers, agencies and citizens.

The major sources of the information in these District Data Books are:

- a) The Commune Data Base information over the years 2006 to 2009 (the most recent data were collected late last 2008), as compiled by the Ministry of Planning
- b) Detailed information directly collected from the Ministry of Health, the Ministry of Education, Youth and Sports and (for maps) the Ministry of Land Management, Urban Planning and Construction
- c) The Project Information Database (PID) at NCDD (up-to-date)
- d) The Commune Development and Planning Database (CDPD) (up to date)
- e) The District Information System (DIS) (updated per Mid 2009)
- f) Direct data collection at provincial and district level on private sector, irrigation, roads, and electricity, through provincial agencies
- g) Medical data collected from MEDiCAM
- h) The ID Poor Project – for poverty data on a number of provinces and districts
- i) NCDD's work on predictive poverty rates
- j) Specific projects for outputs, plans and budgets (Seth Koma, RILGP, RPRP and ICC)

### Limitations of the data

We are fully aware that the data we collected are not always complete, consistent or correct. While we have rejected information that was wrong or very incomplete, we decided not to aim for statistical and scientific perfection, but to include information that is useful, relevant and comprehensive. We also accepted different sources for the same data as this may encourage discussion on the quality of the respective data.

We strongly encourage anyone who notes errors or incompleteness in these data to contact us and to share their data. We hope that the next round of producing such District Data Books can draw on wider sources and more complete data.

We encourage the District Administrations, who receive these data also in digital format, not only to use these for their planning and monitoring, but also to start correcting and updating these data and to share new data with NCDD for future use.

## Contents

The information in the following pages is organized in five sections:

- a) **Geographical data:** this section provides maps on infrastructure and administration and on land use and natural resources management. These maps are also provided in large format to all Districts and Khans.
- b) **District Profile:** this presents wide ranging data, covering 2006 – 2009, at district and commune level, extracted from the Commune Data Base, but edited for better understanding.
- c) **Plans and Projects:** this section presents development priorities determined by Commune and Sangkat Councils, Temporary Agreements, outputs and expenditure of major projects at Commune and District level over 2006 – 2008 and plans and budgets for 2009.
- d) **Services and Organizations:** this section provides details on key infrastructure (roads, electricity, irrigation systems) and services in health and education at district and commune level. It also provides an inventory of resources at the District Administration, NGOs operating in the district and private sector agencies active in the district.
- e) **Poverty Data:** this section provides predicted poverty rates for 2009 for all districts and communes and detailed poverty data compiled and processed by the ID Poor project for those that have been covered by this project.

## The future

It is our hope that this is the start of a longer-term process. We hope that a next edition of these District Data Books will offer more comprehensive, correct and up-to-date information. We hope that the District Administrations will not only start using this information, but also improve and update it. For this they are all provided with the full data set in digital format.

We invite agencies, projects and experts to send reports, statistics and maps that could be used for a next version to us and we invite all users of the District Data Books to inform us about errors, updates and inconsistencies. Please contact us through [info@ncdd.gov.kh](mailto:info@ncdd.gov.kh). We now invite you to browse through this data book. You may open this randomly or use the table of contents and go to the aspects that have your special interest.

We hope that you will be informed, surprised and assisted. We hope, above all, that this information will lead to a deeper understanding of causes and effects of poverty, to purposeful decisions on how to tackle those causes and to greater transparency in using scarce resources for the benefit of all.

Martin de Graaf

Program Advisor, PSDD/NCD



## **SECTION A: GEOGRAPHY**



# **1 Administration and Infrastructure**

Please see separate folder containing A3 maps.



## **2 Land Use and Natural Resources**

Please see separate folder containing A3 maps



### 3 Geography

#### 3.1 Land Area

Total Land Area (ha)	Forest Land Area (ha)		Cultivation Land Area (ha)	Construction Land Area (ha)	Other Land Area (ha)
	Total	Flooded Forest Area			
9728.2	5347	0	2755	1295.2	331

#### 3.2 Distances between Offices

Location	Distance (Km)
From District Office to C/S Office of Cheung Tien	4
From District Office to C/S Office of Chong Kal	0
From District Office to C/S Office of Krasang	16
From District Office to C/S Office of Pongro	12





## **SECTION B: DISTRICT PROFILE<sup>1</sup>**

---

<sup>1</sup> All data in this section come from the Commune Database (CDB) unless otherwise specified. These include primarily new CDB data, collected late 2008, and some data from earlier years. Please note that percentages are rounded to the nearest whole number.



# 1 General Information

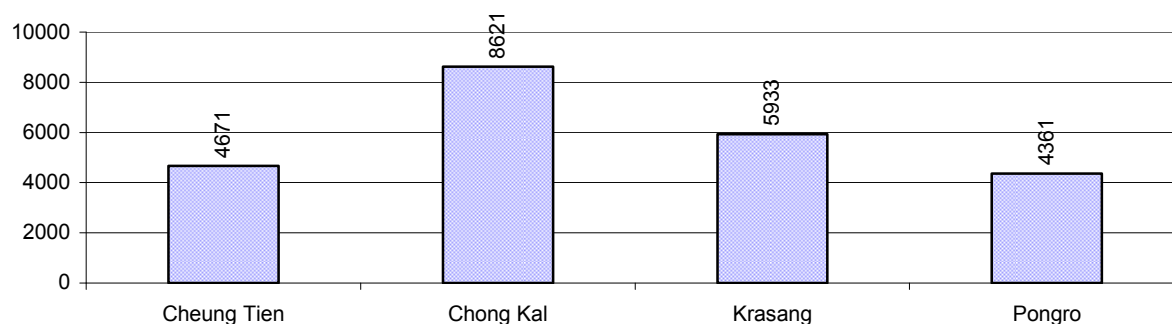
## 1.1 Population of the District

### 1.1.1 Total Population

Number of families	2005	2006	2007	2008
Total number of families	4,201 families	4,335 families	4,467 families	4,630 families
Increase (+)/Decrease (-) in nr of families		3%	3%	4%
Total population	20,793 pers	21,411 pers	21,774 pers	23,586 pers
Increase (+)/Decrease (-) in nr of people		3%	2%	8%
Number of female Headed Households (HH)	628 families	675 families	784 families	816 families

**Note:** Percentages of population and increase/decrease are calculated on basis of the previous year. A negative sign in front of the percentage indicates a decrease in population.

### 1.1.2 Population, by Commune, in 2008



### 1.1.3 Population, by Age Group, over 3 years

Population by age group	2006	2007	2008	
	%	%	%	Number
<b>Age 0-5 years (as percentage of the population)</b>	13%	13%	12%	2,865 persons
Male 0-5 yrs	50%	50%	50%	1,442 persons
Female 0-5 yrs	50%	50%	50%	1,423 persons
<b>Age 6-17 (as percentage of the population)</b>	35%	34%	33%	7,704 persons
Male 6-17 yrs	50%	51%	55%	4,228 persons
Female 6-17 yrs	50%	49%	45%	3,476 persons
<b>Age 18-60 (as percentage of the population)</b>	49%	49%	52%	12,271 persons
Male 18-60 yrs	48%	48%	45%	5,532 persons
Female 18-60 yrs	52%	52%	55%	6,739 persons
<b>Age 61 above (as percentage of the population)</b>	3%	4%	3%	746 persons
Male 61	40%	40%	40%	296 persons
Female 61	60%	60%	60%	450 persons

**Note:** The overall percentage for each age group is calculated on the basis of the total population. The gender distribution of each group is calculated on the basis of the population within that particular age group.

## 1.2 Occupations

### 1.2.1 Percentage of families with a particular Occupation over 3 years

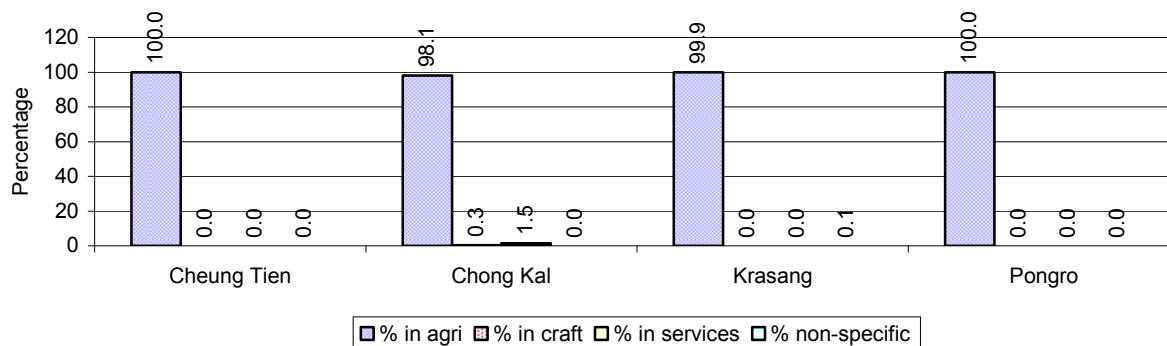
*This table shows the percentage of the population who have a particular occupation (job), for example the percentage of the population in the district who are rice farmers, furniture crafter, trader, etc.*

Description	2006	2007	2008	
	%	%	%	Number
<b>Families whose main occupation is agriculture</b>	99%	98%	99%	4,600 Families
Families whose primary occupation is rice farming	98%	98%	97%	4,510 Families
Families whose primary occupation is cultivating long-term crops	0%	0%	0%	0 Families
Families whose primary occupation is cultivating short-term crops	1%	0%	2%	75 Families
Families whose primary occupation is cultivating vegetable	0%	0%	0%	15 Families
Families whose primary occupation is fisherman	0%	0%	0%	0 Families
Families whose primary occupation is livestock farmer	0%	0%	0%	0 Families
Families whose primary occupation is NTFP collection	0%	0%	0%	0 Families
<b>Families whose main occupation is craft work</b>	0%	0%	0%	5 Families
Families, whose main occupation is in furniture craft, wooden, rattan, vine, bamboo	0%	0%	0%	2 Families
Families whose main occupation is in metal, aluminum, glass goods production	0%	0%	0%	0 Families
Families whose main occupation is food production	0%	0%	0%	3 Families
Families whose main occupation is tire, plastics and rubber goods production	0%	0%	0%	0 Families
Families whose main occupation is textile, clothing goods production	0%	0%	0%	0 Families
Families whose main occupation is in other production, not listed above	0%	0%	0%	0 Families
<b>Families whose main occupation is services</b>	1%	0%	1%	24 Families
Families whose main occupation is trade	0%	0%	0%	3 Families
Families whose main occupation is repair	0%	0%	0%	7 Families
Families whose main occupation is providing transport services	0%	0%	0%	3 Families
Families whose main occupation is providing other services	1%	0%	0%	11 Families
Families whose main occupation is not clear (or multi)	0%	1%	0%	1 Families

**Note:** The occupation percentages are calculated on the basis of the total number of families.

### 1.2.2 Percentage Families that work in one of four occupational sectors, by Commune in 2008

This table indicates the percentage of families involved in one of four occupation types: agriculture, craft, services or non-specific (other). Please note agriculture includes forestry activities such as cutting down trees and gathering gum from the trees.



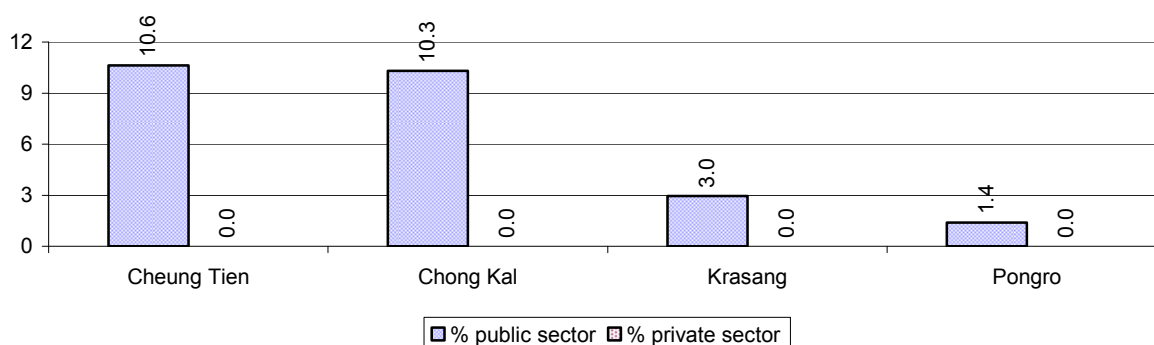
**Note:** Calculated on the basis of the total number of families within a commune.

### 1.2.3 Percentage of Families with public Sector, private Sector or uncertain Jobs, over 3 years

Description	2006	2007	2008	
	%	%	%	Number
Families that have a family member who is a government official, staff or worker	10%	7%	7%	303 families
Families that have a family member who is a private sector staff or worker	0%	0%	0%	0 families
Number of people aged 18-60 with uncertain/irregular jobs	11%	5%	34%	4,142 persons

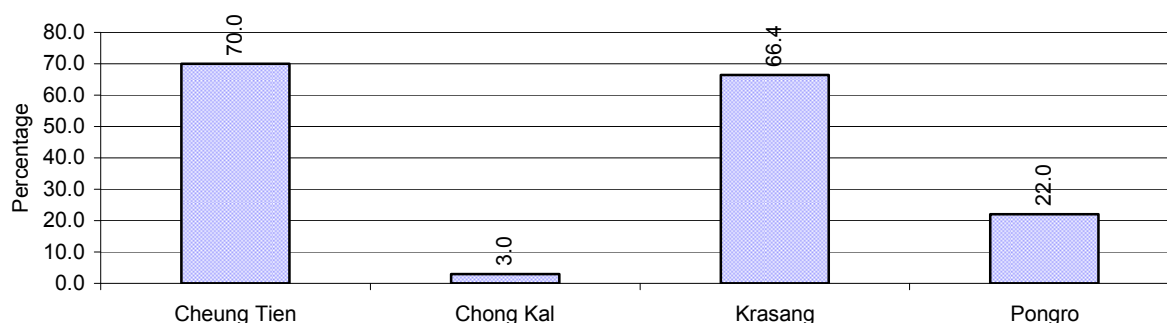
**Note:** In the first two rows percentages are calculated on the basis of the total number of families. In the third row the percentage is calculated on the basis of the total number of people aged 18-60 years.

### 1.2.4 Percentage of Families with public or private Sector Jobs, by Commune in 2008



**Note:** Calculated on the basis of the total number of families in the commune

### 1.2.5 Percentage of People aged 18-60 years with uncertain/irregular Jobs, by Commune, in 2008.



## 1.3 Property

### 1.3.1 Housing types and facilities over 3 years

This table shows the percentage of people living in a certain type of house. It also indicates how many houses have electricity or battery powered lights and how many have TV.

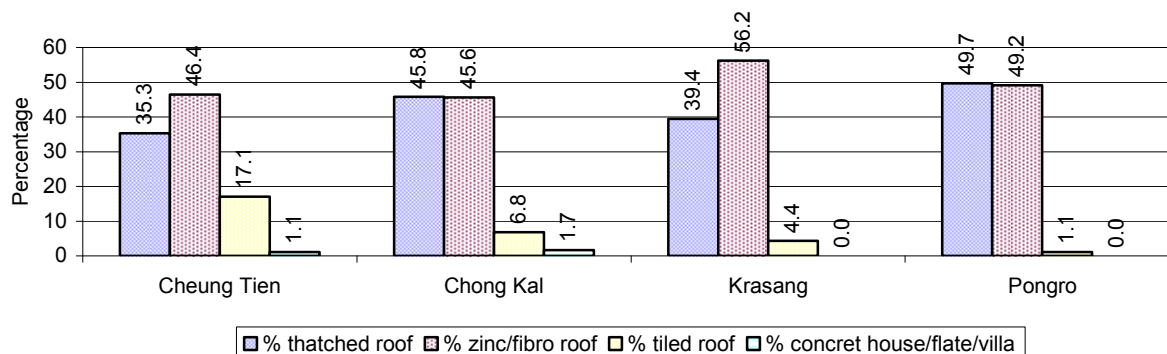
House Type	2006 %	2007 %	2008	
			%	Number
House with thatched roof	43 %	43 %	43 %	1,898 houses
House with zinc/fibro roof	51 %	50 %	49 %	2,171 houses
House with tiled roof	7 %	7 %	7 %	308 houses
Flats/apartments (with many families living)	0 %	0 %	0 %	0 houses
Concrete house or flat (with one family living)	0 %	1 %	1 %	34 houses
Villa house	0 %	0 %	0 %	2 houses
Houses with electricity	1 %	2 %	1 %	65 houses
Houses with battery light	35 %	46 %	42 %	1,832 houses
Houses with TV	26 %	30 %	32 %	1,431 houses

**Note:** Calculated against the total number of houses

### 1.3.2 Families living on public Land or without a permanent House

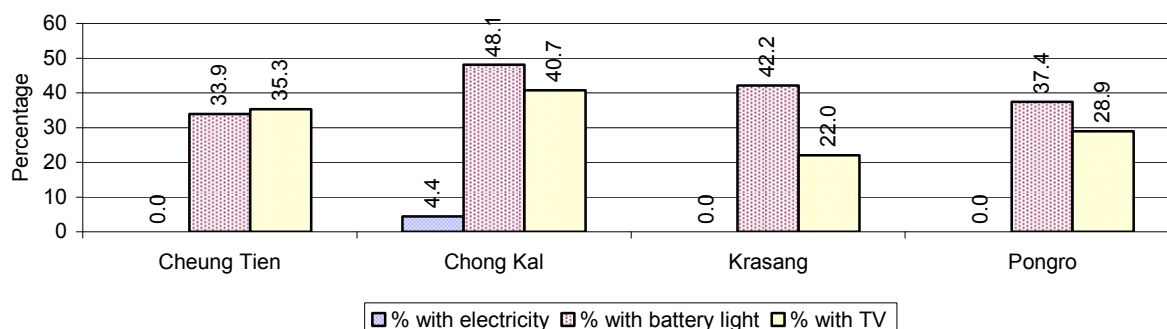
Living situation	2006	2007	2008
Families living in a house on public land	44 families	0 families	0 families
People, without permanent housing	7 person(s)	4 person(s)	10 person(s)

### 1.3.3 Percentage of Population living in a particular type of House, by Commune, in 2008



**Note:** Calculated against the total number of houses in each commune

### 1.3.4 Percentage of Houses with Electricity, Battery Lights and/or TVs, by Commune, in 2008



**Note:** Calculated against the total number of houses in each commune

### 1.3.5 Types of Vehicles and their ratio to Families across 3 years

This table shows the number of families per vehicle in the district. The last column shows the total number of each type of vehicle in the district for 2008.

Description	2006 ratio	2007 ratio	2008	
			Ratio	Number
Bicycle and bicycle with trailer	1	2	2	2,582
Ox-carts and horse-carts	2	2	3	1,547
Motorbike/with trailer	6	5	4	1,056
Motor tri-cycle	N/A	N/A	N/A	0
Large Transportation				
<b>Total number of cars/trucks</b>	94	95	91	51
Locally made vehicles	181	235	171	27
Trucks for goods transport	361	496	514	9
Buses/mini buses for passengers	2,168	N/A	N/A	0
Family cars	542	235	309	15
Agriculture machinery				
Tractors used for plowing	289	344	386	12
Power-tillage used for plowing	7	5	4	1,104
Other type of machinery				
Other type of machinery	N/A	N/A	N/A	0
Water transportation				
Row boats	58	67	67	69
<b>Total number of motor boats</b>	N/A	N/A	N/A	0
Motor boats used for fishing	N/A	N/A	N/A	0
Motor boats used for passengers	N/A	N/A	N/A	0
Motor boats used for goods transporting	N/A	N/A	N/A	0

**Note:** Ratio of families to a particular type of vehicle is the result of the total number of families divided by total number of that type of vehicle. Other types of vehicles, such as bulldozer, excavator, rollers etc. are not listed.

## 2 Infrastructure and Economy

### 2.1 Roads in meters over 3 years

Description	2006	2007	2008
Bituminous road	8,210 m	0 m	0 m
DBST, Macadam road	0 m	0 m	0 m
Concrete road	0 m	0 m	0 m
Laterite road	23,692 m	25,610 m	13,645 m
Constructed earth road	17,300 m	1,094 m	2,769 m
Un-constructed earth road	2,000 m	7,000 m	5,800 m

### 2.2 Sewerage Pipes in meters over 3 years

Description	Sewage pipe length		
	2006	2007	2008
Total length of sewage pipe, diameter 30-50 cm	0 m	5 m	5 m
Length of newly constructed sewage pipe, diameter 30-50 cm	0 m	25 m	0 m
Length of sewage pipe, diameter 30-50 cm needs repair/rehabilitation	0 m	0 m	0 m
Total length of sewage pipe, diameter of pipe 60-100 cm	5 m	45 m	220 m
Length of newly constructed sewage pipe, diameter 60-100 cm	9 m	10 m	12 m
Length of sewage pipe, diameter 60-100 cm needs repair/rehabilitation	2 m	0 m	0 m
Sewage pipe, diameter of pipe over 100 cm	0 m	30 m	30 m
Length of newly constructed sewage pipe, diameter over 100 cm	0 m	0 m	0 m
Length of sewage pipe, diameter over 100 cm needs repair/rehabilitation	0 m	0 m	0 m

### 2.3 Drainage and Bridges

Construction Type	2006		2007		2008	
	place(s)	Length	place(s)	Length	place(s)	Length
Single pipe culvert	27	42m	58	23 m	21	107 m
Double-pipe culvert	20	42m	28	26 m	10	52 m
Box pipe culvert	7	20m	10	71m	4	65 m
Wooden bridge	3	55m	0	0m	0	0 m
Concrete bridge	17	6m	7	141m	4	115 m
Bale bridge	1	10m	0	0m	0	0 m
Spillway construction	0	0m	2	30m	2	30 m

### 2.4 Services in the District

Descriptions	Number of places by year		
	2006	2007	2008
<b>Public</b>			
Electricity generating stations	0	0	1
Health clinics	0	0	0
<b>Private</b>			
Bicycle and motorcycle repair places	8	11	19
Agricultural machinery, tools and equipment repair places	3	0	5
Electronic tool repair places	2	3	2
Battery-charging services	29	29	39
Handicraft places, wooden furniture and forest by-products	4	4	7
Other handicraft places (excluding furniture)	0	0	0
Small-scale services (hairstylist, phone service, massage,	5	6	9



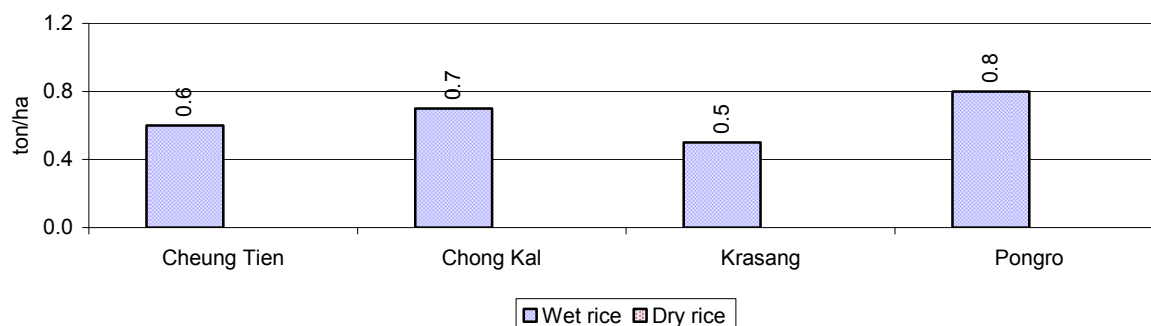
Descriptions	Number of places by year		
	2006	2007	2008
Karaoke, etc)			
Small-scale food shop businesses (Food, groceries, drink shop, etc)	12	16	2
Small-scale rice mills	136	145	169
Medium or large-scale rice mills	10	12	15
Small-scale markets	0	0	0
Large-scale market	0	0	0
Alcohol refinery places	0	0	0
Pharmacies and small drug stores	0	0	6
Hotels	0	0	0
Guest houses	0	0	0
Restaurants	0	0	0
Gasoline stations	1	0	0

## 2.5 Agriculture

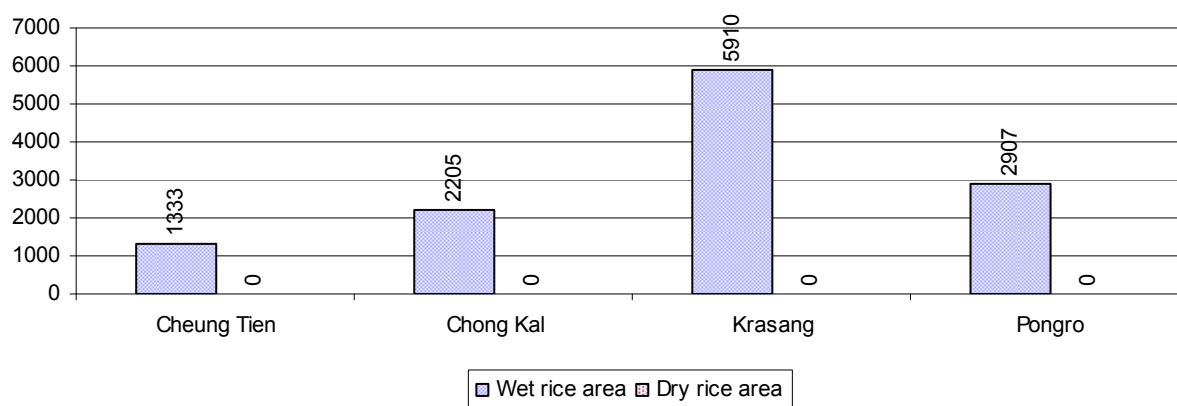
### 2.5.1 Rice cultivation in the District over 3 years

Description	2006	2007	2008
Total dry rice land area	0 ha	300 ha	0 ha
Actual dry rice cultivation area	0 ha	0 ha	0 ha
% actual cultivation to total land	-%	0%	-%
Total dry rice production	- tonne(s)	- tonne(s)	- tonne(s)
Average dry rice yield	- tonne(s)/ha	- tonne(s)/ha	- tonne(s)/ha
Total wet rice land area	16,033 ha	16,545 ha	14,876 ha
Actual wet rice cultivation area	12,214 ha	12,110 ha	12,355 ha
% actual cultivation to total land	76 %	73%	83%
Total wet rice production	17,710.30 tonne(s)	8,325.63 tonne(s)	8,030.75 tonne(s)
Average wet rice yield	1.5 tonne(s)/ha	0.7 tonne(s)/ha	0.7 tonne(s)/ha
Total intensive rice land area	0 ha	0 ha	0 ha
Actual intensive rice cultivation area	- ha	- ha	- ha
Average intensive rice yield	- tonne(s)/ha	- tonne(s)/ha	- tonne(s)/ha
Actual upland rice cultivation area	6 ha	50 ha	55 ha
Total upland rice production	6 tonne(s)	50 tonne(s)	17 tonne(s)
Average upland rice yield	1.0 tonne(s)/ha	1.0 tonne(s)/ha	0.3 tonne(s)/ha

### 2.5.2 Estimated wet and dry Season Rice Yield in tonne(s)/Ha, by Commune, in 2008



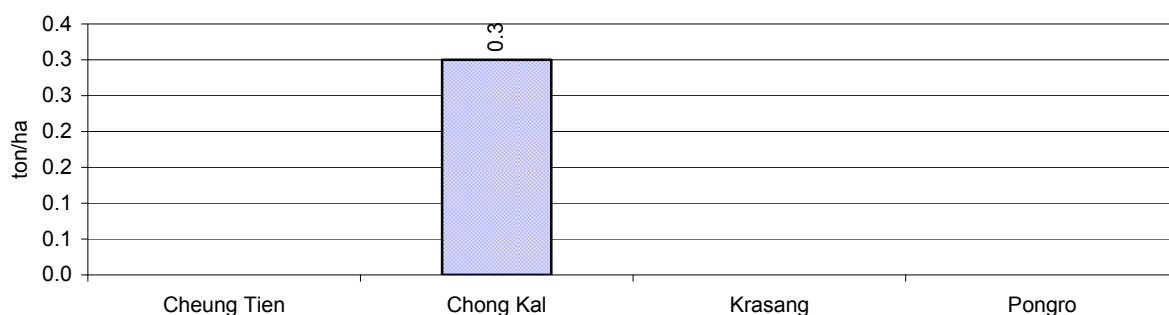
### 2.5.3 Cultivated wet and dry Season Rice areas in Ha, by Commune, in 2008



### 2.5.4 Estimated intensive Rice Yields in tonnes/Ha, by Commune, for 2008

There were no estimated intensive rice yields in this District in 2008

### 2.5.5 Estimated upland Rice Yield in tonnes/Ha, by Commune, for 2008

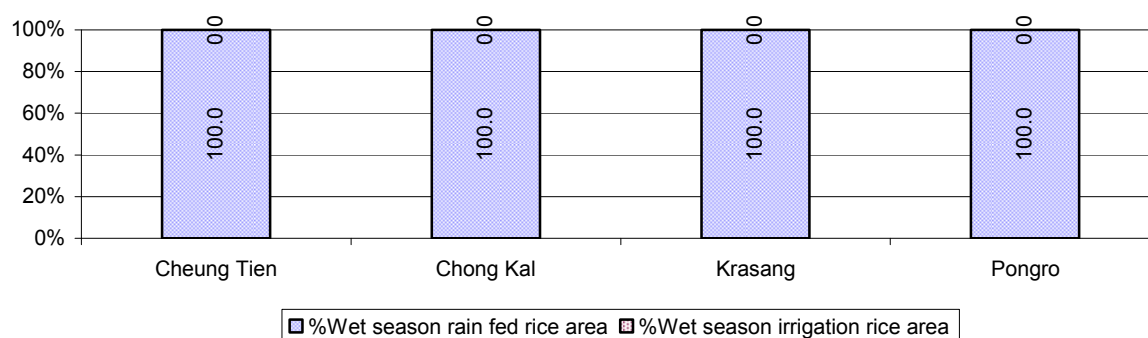


### 2.5.6 Wet season Rice irrigation across 3 years

Description		2006 %	2007 %	2008	
				%	Number
Total area of wet season rain fed rice land		99%	100%	100 %	12,355 ha
Percentage of wet season rice land that is irrigated; and for 2008 area in Ha		1 %	0 %	0 %	0 ha
Where	Area irrigated from canal/dam	100 %	- %	- %	0 ha
	Area irrigated from river, stream, lake, natural pond	0 %	- %	- %	0 ha
	Area irrigated from drilled well	0 %	- %	- %	0 ha
	Area irrigated from dug pond	0 %	- %	- %	0 ha

### 2.5.7 Water sources for wet Season Rice Cultivation, by Commune, in 2008

This chart shows the percentage of wet season rice cultivation receiving water from rain (natural) and from irrigation.



### 2.5.8 Access to Irrigation

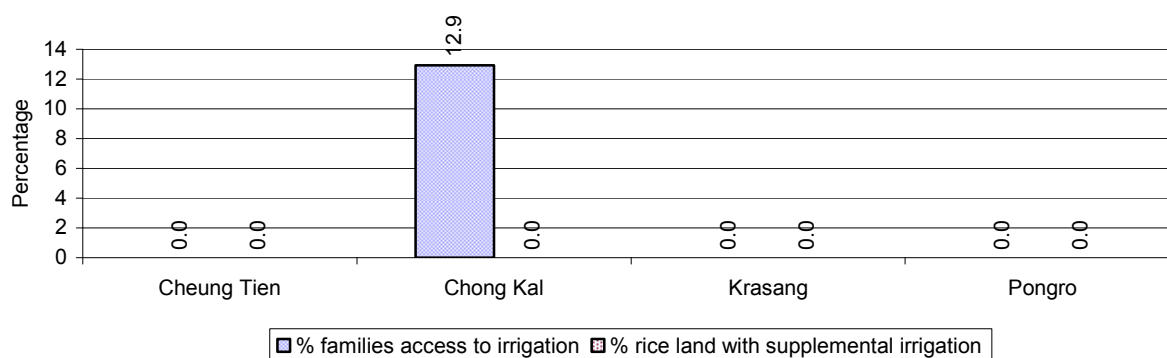
Description	2006 %	2007 %	2008	
			%	Number
Families who have access to irrigation water	3%	5%	4%	197 families
Families who have irrigation wells	0%	0%	2%	80 families

**Note:** Calculated against the total number of families are rice farmers

### 2.5.9 Number of Irrigation Wells over 3 years

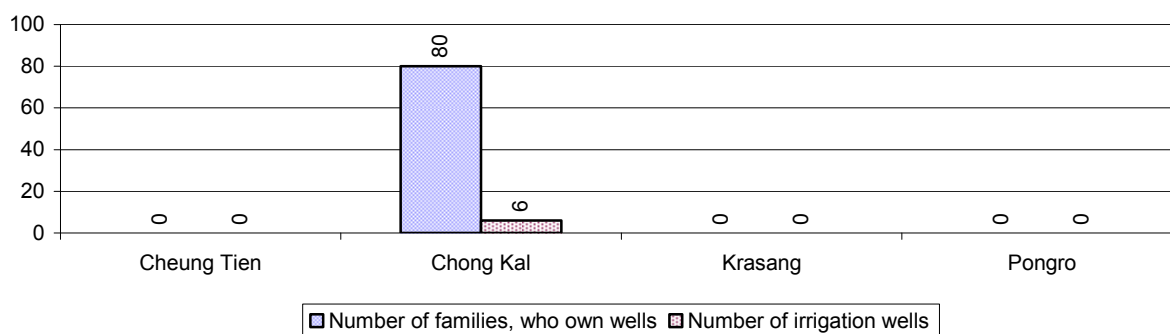
Description	2006	2007	2008
Number of irrigation wells	0 wells	0 wells	6 wells

### 2.5.10 Percentage of Families with access to (supplemental) Irrigation for wet Season Rice cultivation, by Commune, in 2008



**Note:** % of families, with access to irrigation is calculated against the total number of families, whose main occupation is rice farming. Irrigated wet rice land area is calculated against the total actual wet rice land cultivated areas

### 2.5.11 Irrigation Wells, by Commune, in 2008

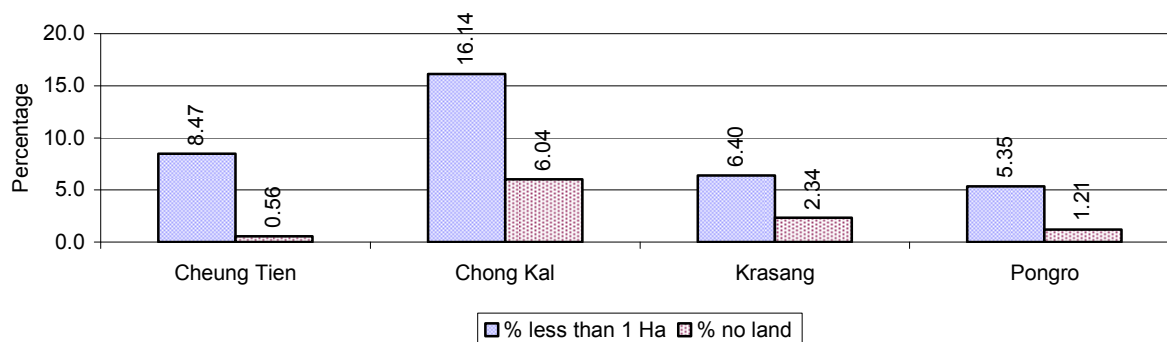


### 2.5.12 Farmers owning less than one hectare of Rice Land

Description	2006	2007	2008	
	%	%	%	Number
Families who have less than one hectare of rice land	4%	11%	10%	445 families
Families who do not own any rice land	9%	2%	3%	135 families

**Note:** Calculated on basis of total number of families who are rice farming

### 2.5.13 Percentage of Farmers with less than one Hectare or no Rice Land, by Commune, in 2008

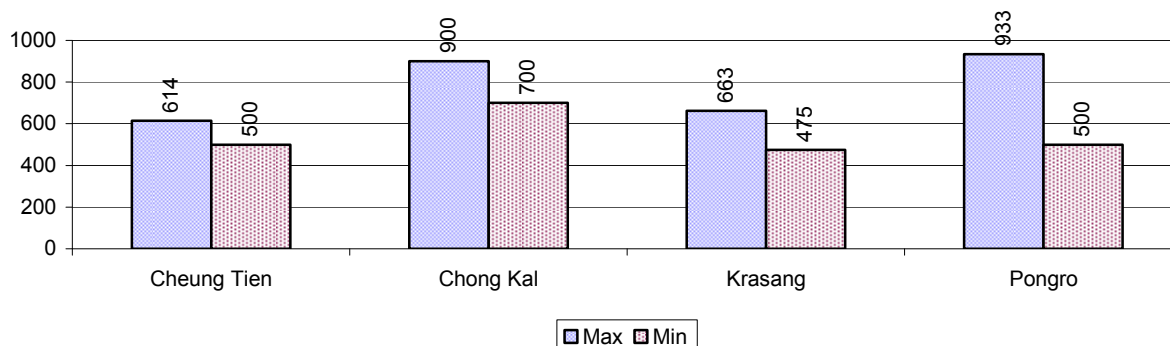


**Note:** Calculated on basis of total number of families who are rice farming

### 2.5.14 Average farm-gate Prices of Rice, over 3 years

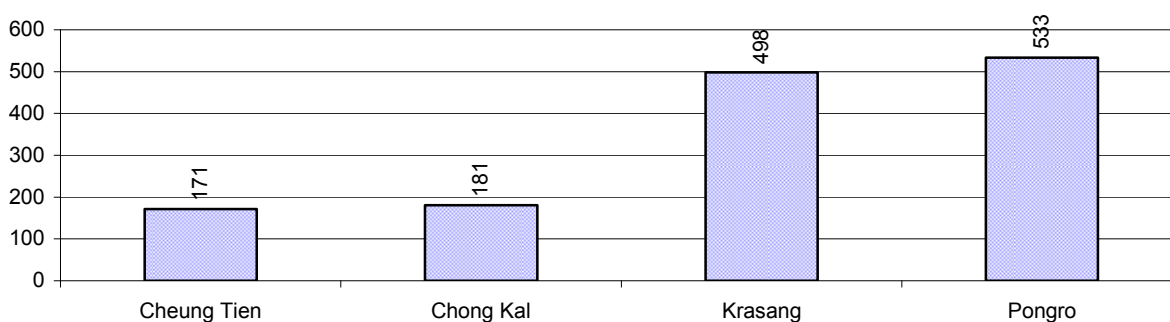
Description	2006	2007	2008
Maximum average farm gate price	489 Riels/Kg	742 Riels/Kg	778 Riels/Kg
Minimum average farm gate price	388 Riels/Kg	560 Riels/Kg	544 Riels/Kg
Average farm gate price	438 Riels/Kg	651 Riels/Kg	661 Riels/Kg
Average rice production per person	827 Kg/person	385 Kg/person	341 Kg/person

### 2.5.15 Minimum and maximum farm-gate Prices of Rice in Riel/kg, by Commune, in 2008



### 2.5.16 Production of Paddy in Kgs/Person, by Commune, in 2008

*This table shows how much paddy (harvested rice) is produced in a year in a commune, in kgs per person.*

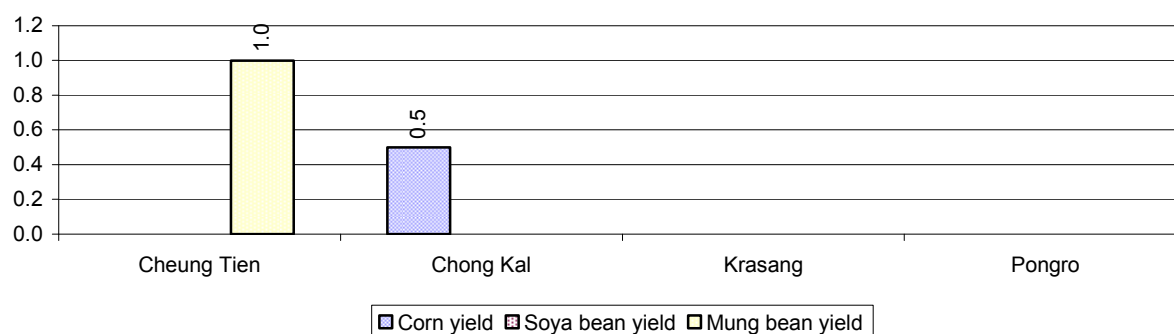


### 2.5.17 Production of other Crops, over 3 years

Crops	2006	2007	2008
Corn cultivation area	0 ha	5 ha	1 ha
Estimated corn yield	- tonne(s)/ha	0.5 tonne(s)/ha	0.5 tonne(s)/ha
Estimated corn production	- tonne(s)	3 tonne(s)	1 tonne(s)
Soya bean cultivation area	0 ha	0 ha	0 ha
Estimated Soya bean yield	- tonne(s)/ha	- tonne(s)/ha	- tonne(s)/ha
Estimated Soya bean production	- tonne(s)	- tonne(s)	- tonne(s)
Mungbean cultivation area	7 ha	13 ha	2 ha
Estimated Mungbean yield	1.5 tonne(s)/ha	0.8 tonne(s)/ha	1.0 tonne(s)/ha
Estimated Mungbean production	11 tonne(s)	10 tonne(s)	2 tonne(s)
Peanut cultivation area	0 ha	0 ha	0 ha
Estimated Peanut yield	- tonne(s)/ha	- tonne(s)/ha	- tonne(s)/ha
Estimated Peanut production	- tonne(s)	- tonne(s)	- tonne(s)
Cassava cultivation area	0 ha	0 ha	0 ha
Estimated Cassava yield	- tonne(s)/ha	- tonne(s)/ha	- tonne(s)/ha
Estimated Cassava production	- tonne(s)	- tonne(s)	- tonne(s)
Sweet potatoes cultivation area	0 ha	0 ha	0 ha
Estimated Sweet potatoes yield	- tonne(s)/ha	- tonne(s)/ha	- tonne(s)/ha
Estimated Sweet potatoes	- tonne(s)	- tonne(s)	- tonne(s)

Crops	2006	2007	2008
production			
Sesame cultivation area	0 ha	0 ha	0 ha
Estimated Sesame yield	- tonne(s)/ha	- tonne(s)/ha	- tonne(s)/ha
Estimated Sesame production	- tonne(s)	- tonne(s)	- tonne(s)

### 2.5.18 Yields of Corn, Soya beans and Mungbeans in tonne(s)/ha, by Commune, in 2008



### 2.5.19 Yields of Peanuts and Cassava in tonne(s)/ha by Commune, in 2008

There were no yields for any of these crops in this District in 2008

### 2.5.20 Yields of Sweet Potatoes and Sesame in tonne(s)/ha, by Commune, in 2008

There were no yields for any of these crops in this District in 2008

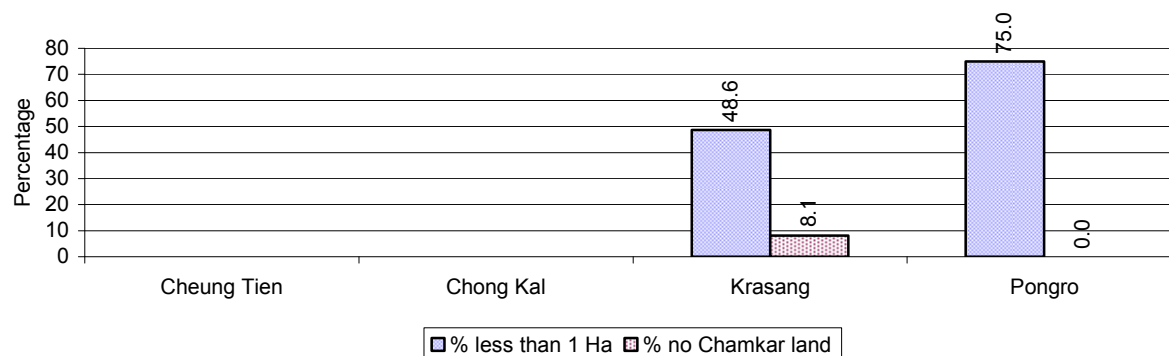
### 2.5.21 Percentage Farmers who own less than 1 Ha or no Chamkar land

Description	2006 %	2007 %	2008	
			%	Number
Families, who own less than 1ha of Chamkar land	24%	0%	53%	48 families
Families, with no Chamkar land	34%	0%	7%	6 families

**Note 1:** Calculated as a percentage of the total number of families whose main occupation is Chamkar (not rice) farming

**Note 2:** Chamkar land is no-rice land, i.e. other crops

### 2.5.22 Percentage Farmers owning less than 1 ha or no Chamkar land, by Commune, in 2008



**Note:** Percentage is calculated among families, who Chamkar farm as a main occupation, not the total population of the commune.

**2.5.23 Percentage of Families raising Cattle/Buffalo, over 3 years**

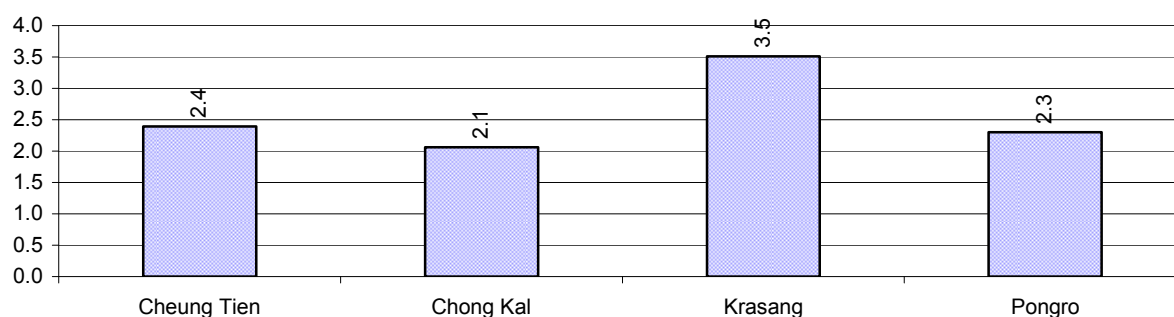
Description	2006 %	2007 %	2008	
			%	Number
Families raising cattle/buffalo	85%	80%	74%	3,420 families
Families raising cattle/buffalo as labor forces	74%	61%	47%	2,197 families

**Note:** Calculated against the total number of families.

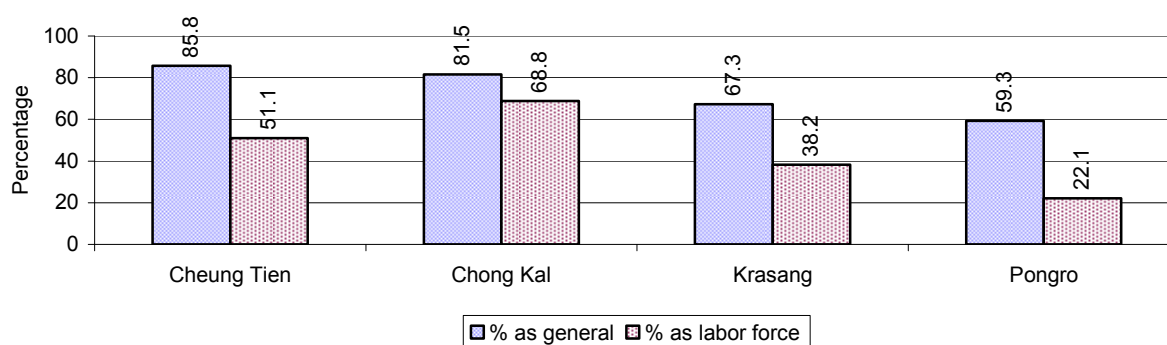
**2.5.24 Number of Cattle/buffalo being raised, over 3 years**

Description	2006	2007	2008
Total number of cattle/buffalo	10,160 head(s)	8,538 head(s)	8,603 head(s)
Average cattle/buffalo per families	2.8 head(s)/families	2.4 head(s)/families	3 head(s)/families

**Note:** Calculated by dividing total number of cattle/buffalo by total number of cattle/buffalo raising families

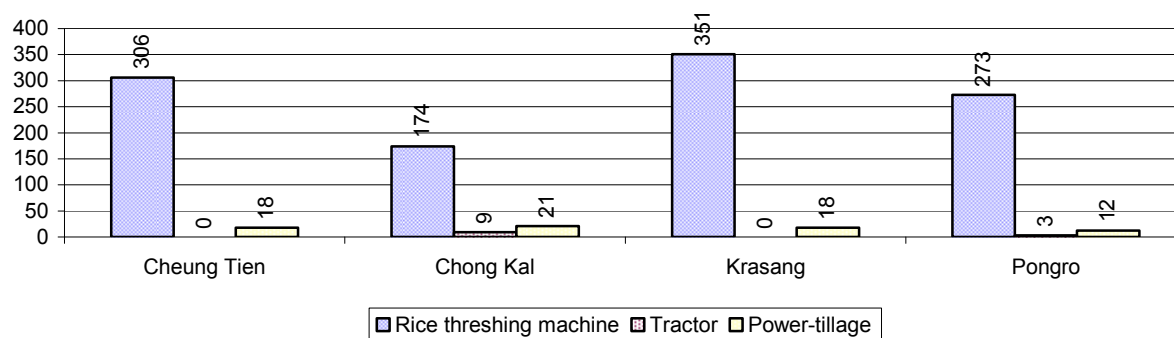
**2.5.25 Average number of Cattle/Buffalo per Family, by Commune, in 2008**

**Note:** Calculated by dividing total number of cattle/buffalo by total number of cattle/buffalo raising families

**2.5.26 Percentage Families raising Cattle/Buffalo, for general and labor purposes in 2008, by Commune**

**Note:** Calculated using the total number of families raising cattle/buffalo against the total number of families.

### 2.5.27 Type and number of agricultural Machines, by Commune, in 2008

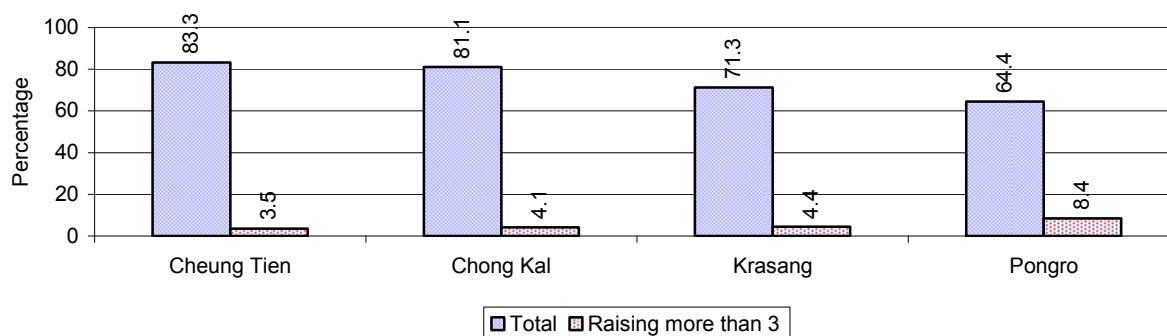


### 2.5.28 Livestock-producing Households over 3 years

Description	2006 %	2007 %	2008	
			%	Number
Total number of families raising pigs	74%	70%	75%	3,491 families
number of families raising more than 3 pigs	6%	9%	5%	232 families
Total number of families raising chickens	88%	90%	92%	4,281 families
number of families raising more than 3 chickens	54%	73%	73%	3,384 families
Total number of families raising ducks	29%	25%	19%	897 families
number of families raising more than 5 ducks	23%	19%	14%	645 families
Total number of families raising goats or sheep	0%	0%	0%	5 families
Total number of families raising horses	0%	0%	0%	0 families

**Note:** Calculated against the total number of families

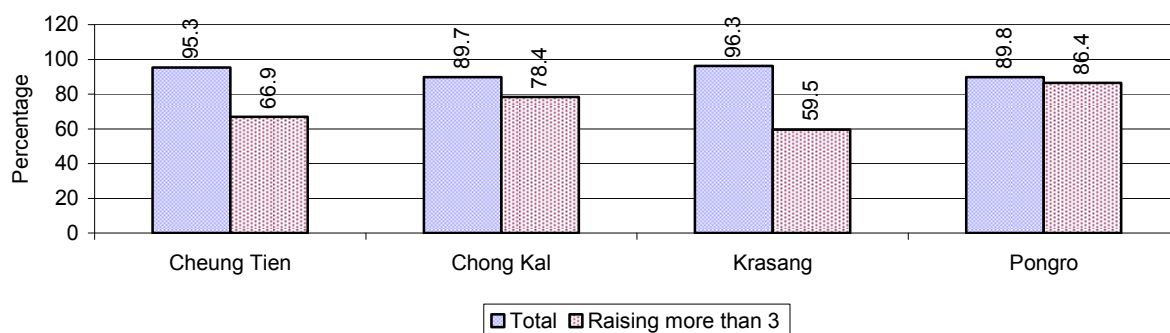
### 2.5.29 Percentage Families raising Pigs, by Commune, in 2008



**Note:** Calculated against the total number of families in the commune

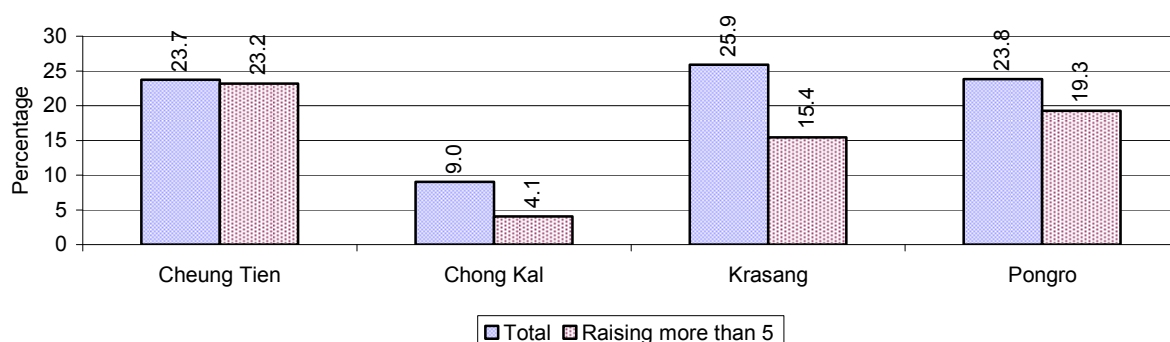


### 2.5.30 Percentage Families raising Chickens, by Commune, in 2008



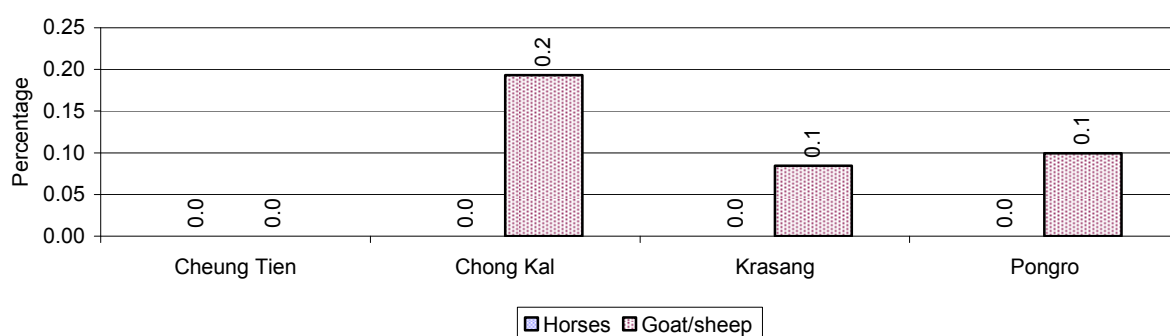
**Note:** Calculated against the total number of families in the commune

### 2.5.31 Percentage Families raising Ducks, by Commune, in 2008



**Note:** Calculated against the total number of families in the commune

### 2.5.32 Percentage Families raising Horses, Goats or Sheep, by Commune, in 2008



**Note:** Calculated against the total number of families in the commune

### 2.5.33 Livestock Farms over 3 years

Description	2006	2007	2008
Number of cattle/buffalo farms	0 farm(s)	0 farm(s)	0 farm(s)
Number of pig farms	0 farm(s)	7 farm(s)	0 farm(s)
Number of goat/sheep farms	0 farm(s)	0 farm(s)	0 farm(s)
Number of chicken farms	0 farm(s)	0 farm(s)	0 farm(s)
Number of duck farms	0 farm(s)	1 farm(s)	0 farm(s)

### 2.5.34 Number Livestock Farms, by Commune in 2008

There were no farms of this type in this District in 2008

**Note:** Number of farms are recorded by the village chief, not by counting number of livestock in each farm

### 2.5.35 Number Chicken and Duck Farms, by Commune, for 2008

There were no farms of this type in this District in 2008

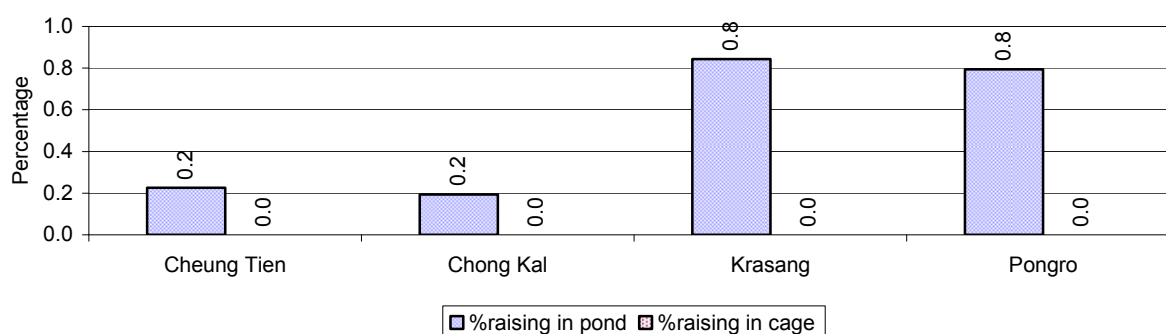
**Note:** Number of farm places recorded by village chief, not by counting number of livestock in each farm

### 2.5.36 Families raising Fish over 3 years

Description	2006	2007	2008
Total number of families raising fish	34 families	35 families	23 families
% families raising fish	1%	1%	0%
Number families raising fish in pond	33 families	34 families	23 families
% families raising fish in pond	1%	1 %	0%
Number fish pond	41 pond(s)	38 pond(s)	30 pond(s)
No. of ponds per family	1.2 pond/families	1.1 pond/families	1.3 pond/families
Number of families raising fish in cage	1 families	1 families	0 families
%families raising fish in cage	0 %	0 %	0%
Number of fish cage	1 cage(s)	1 cage(s)	0 cage(s)
No. of fish cage per family	1.0 cage /families	1.0 cage /families	- cage /families

**Note:** % of families raising fish or fish in ponds or cages is calculated a percentage of the total number of families.

### 2.5.37 Percentage of Families raising Fish, by Commune, in 2008



**Note:** Calculated as a percentage of the total number of families in the commune.

### 2.5.38 Shrimp and Prawn Farming over 3 years

Description	2006	2007	2008
Number of families raising shrimps	0 families	0 families	0 families
% Families raising shrimps	0%	0%	0%
Number of shrimp ponds	0 pond	0 pond	0 pond
Total area raising shrimps	0 ha	0 ha	0 ha
Area per family	-ha/families	-ha/families	-ha/families
Number of families raising prawns	0 families	0 families	0 families
% families raising prawns	0%	0%	0%
Number prawn ponds	0 pond	0 pond	0 pond
Ponds per families	- pond/families	-pond/families	-pond/families
Number of prawn cages	0 cage	0 cage	0 cage
Cages per families	0 cage /families	0 cage /families	0 cage /families

**Note:** Percentage of families raising either prawns or shrimp is calculated against the number of families, who do aquaculture farming, NOT the total population.

**2.5.39 Numbers of Families raising Shrimps and number of Shrimp Ponds, by Commune, in 2008**

There were none of these in this District in 2008

**2.5.40 Number of Families raising Prawn and Number of Prawn Ponds/Cages, by Commune, in 2008**

There were none of these in this District in 2008

### 3 Social Aspects

#### 3.1 Education

##### 3.1.1 Kindergarten in the District over 3 years

Description	2006	2007	2008
Number of community kindergarten schools	25 school(s)	18 school(s)	12 school(s)
Number of community kindergarten class rooms	19 room(s)	12 room(s)	12 room(s)
Number of community kindergarten classes	25 class(es)	25 class(es)	25 class(es)
Number of community kindergarten teachers	25 person(s)	25 person(s)	25 person(s)
Number of women community kindergarten teachers	25 women	25 women	25 women
Number of state and private kindergarten schools	4 school(s)	5 school(s)	5 school(s)
Number of state and private kindergarten class rooms	4 room(s)	5 room(s)	5 room(s)
Number of state and private kindergarten classes	4 class(es)	5 class(es)	5 class(es)
Number of state and private kindergarten teachers	4 person(s)	11 person(s)	5 person(s)
Number of women state and private kindergarten teachers	4 women	11 women	5 women

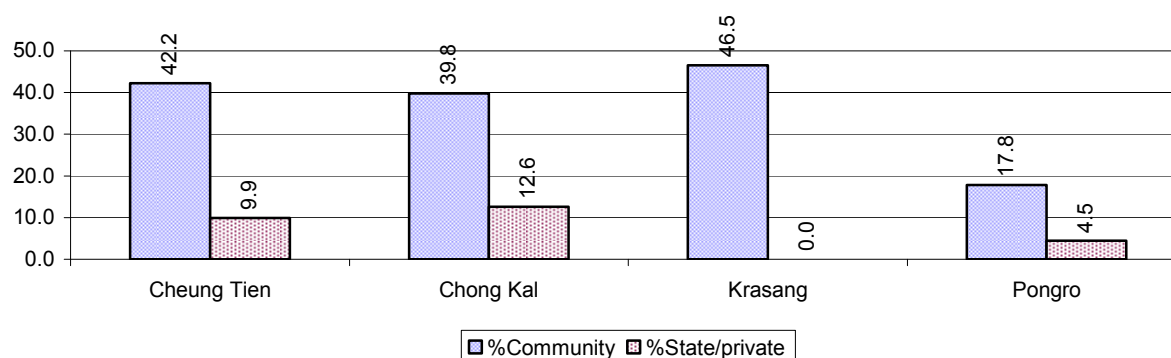
##### 3.1.2 Percentage enrolment at Kindergarten level over 3 years

*This table shows the percentage of the total 3-5 year old population attending kindergarten.*

Description	2006 %	2007 %	2008	
			%	Number
Total percentage of children, 3-5 yrs, go to kindergarten	46%	51%	43%	719 person(s)
Percentage of children, 3-5 yrs, go community kindergarten	34%	41%	37%	605 person(s)
Percentage children, 3-5 yrs, go state/private kindergarten	12%	9%	7%	114 person(s)

**Note:** Calculated against the total for that age group

##### 3.1.3 Percentage of Children 3-5 yrs attending Kindergarten, by Commune, in 2008



### 3.1.4 Basic Education over 3 years

#### Primary School

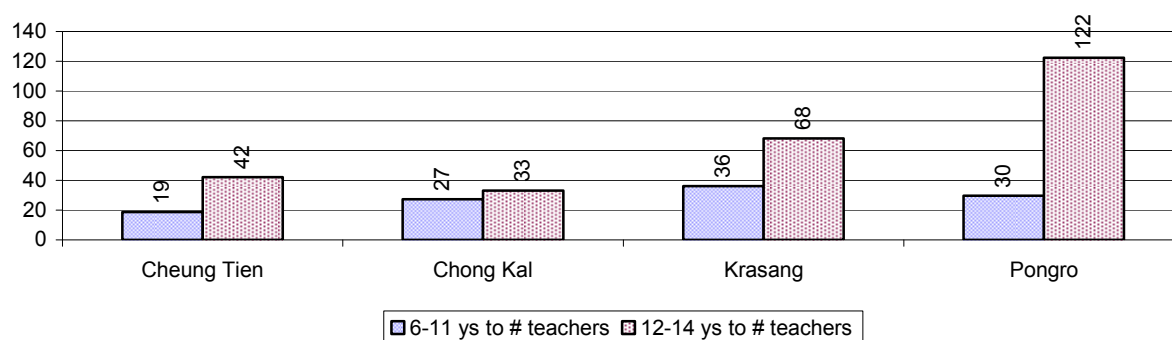
Description	2006	2007	2008
Number of primary schools	25 school(s)	24 school(s)	27 school(s)
Number of primary school rooms	95 room(s)	105 room(s)	87 room(s)
Number of primary classes	153 class(es)	126 class(es)	154 class(es)
Number of primary teachers	121 person(s)	116 person(s)	121 person(s)
Ratio of children 6-11 yrs to school	148	144	124
Ratio of children 6-11 yrs to school room	39	33	39
Ratio of children 6-11 yrs to class	24	27	22
Ratio of children 6-11 yrs to teacher	31	30	28

**Note:** According to education norm, children 6-11 yrs should attend primary school, while 12-14 yrs should be in lower secondary school, but in reality this varies.

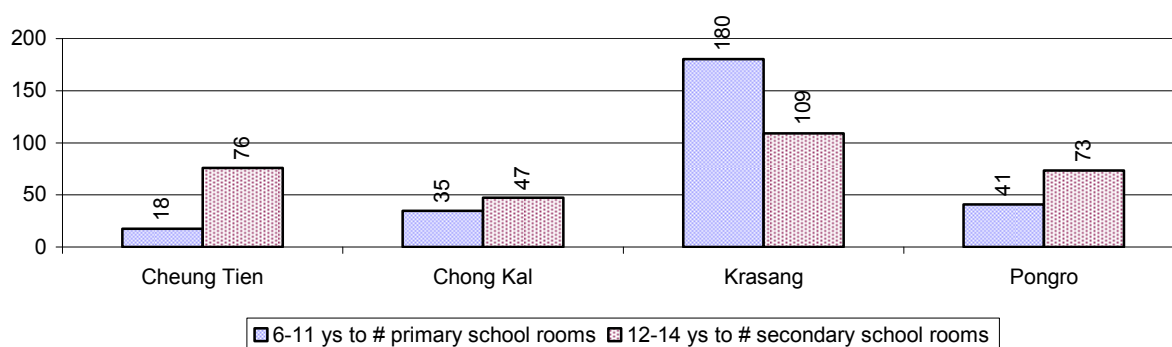
#### Lower Secondary School

Description	2006	2007	2008
Number of lower secondary schools	5 school(s)	7 school(s)	4 school(s)
Number of lower secondary school rooms	23 room(s)	36 room(s)	29 room(s)
Number of lower secondary classes	19 class(es)	29 class(es)	23 class(es)
Number of lower secondary teachers	20 person(s)	40 person(s)	40 person(s)
Ratio children 12-14 yrs to school	388	298	489
Ratio of children 12-14 yrs to school room	84	58	67
Ratio of children 12-14 yrs to class	102	72	85
Ratio of children 12-14 yrs to teacher	97	52	49

### 3.1.5 Ratio of 6-11 year old and 12-14 year old Children to number of Teachers, by Commune, in 2008



### 3.1.6 Ratio of 6-11 year old and 12-14 year old Children to number of School Rooms, by Commune, in 2008



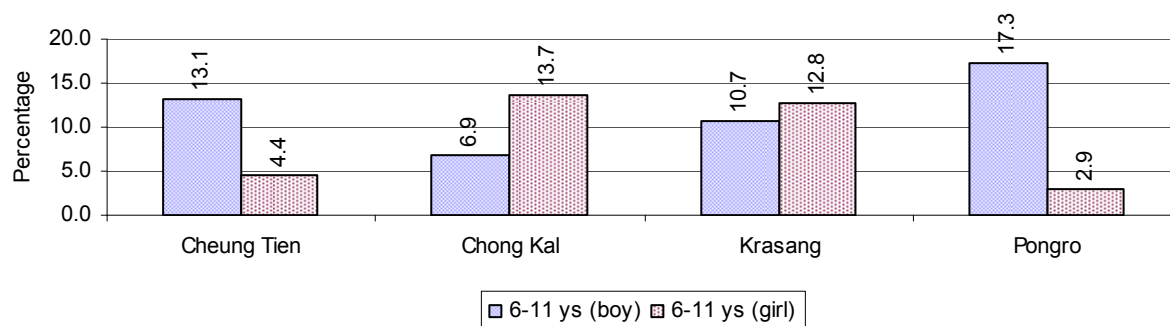
### 3.1.7 Enrolment status at Primary Level over 3 years

Description	2006 %	2007 %	2008	
			%	Number
Total children aged 6-11 years old	17%	16%	14%	3,361 person(s)
Total children aged 6-11 who are in school	81%	87%	90%	3,011 person(s)
Total children aged 6-11 who are not in school	19%	13%	10%	350 person(s)
Total girls aged 6-11 years old	16%	15%	13%	1,606 person(s)
Total girls aged 6-11 who are in school	80%	87%	90%	1,453 person(s)
Total girls aged 6-11 who are not in school	20%	13%	10%	153 person(s)
Total boys aged 6-11 years old	18%	17%	15%	1,755 person(s)
Total boys aged 6-11 who are in school	82%	86%	89%	1,558 person(s)
Total boys aged 6-11 who are not in school	18%	14%	11%	197 person(s)

**Note 1:** Percentage is calculated on the basis of the total number of children within 6-11 year age group for the first 3 rows and for the total girls and the total boys aged 6-11 yrs.

**Note 2:** Number of girls aged 6-11 who are in & not in school is calculated against the total number of girls aged 6-11 yrs. Number boys, 6-11 yrs who are in & not in school are calculated against the total number of boys aged 6-11 yrs.

### 3.1.8 Percentage of 6-11 year old Children not in School, by Commune, in 2008



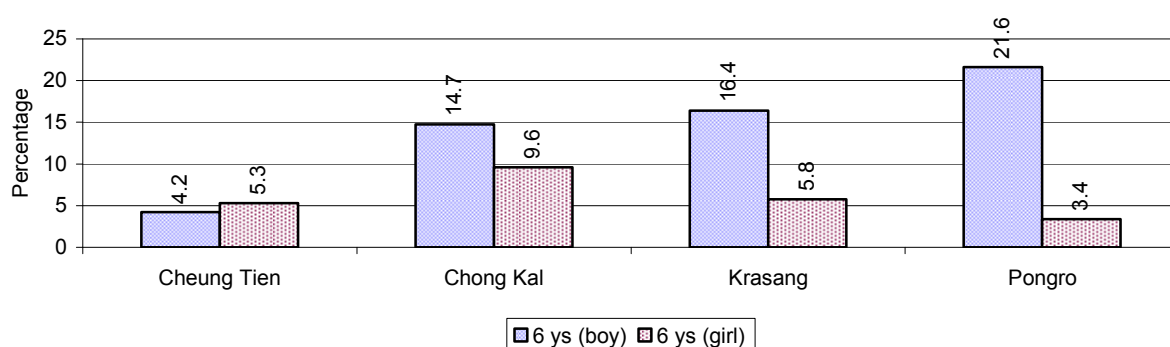
**Note:** calculated on the basis of the total number of children within 6-11 year age group in the commune.

### 3.1.9 Enrolment of 6 year old Children over 3 years

Description	2006 %	2007 %	2008	
			%	Number
Total % and number of children aged 6 years old	4%	3%	3%	709 person(s)
Total % of children aged 6 years old in school	74%	88%	85%	605 person(s)
Total % of children aged 6 years old not in school	26%	12%	15%	104 person(s)

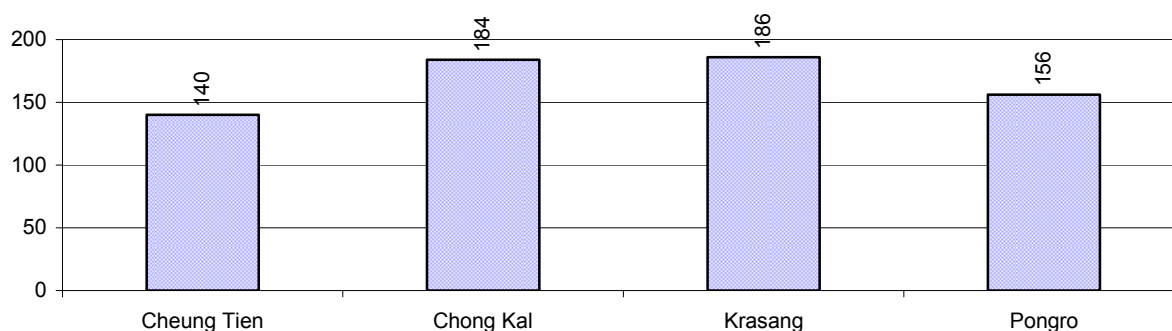
**Note:** First row calculated as a percentage of total population. Second and third row calculated as a percentage of the total number of 6 year olds.

### 3.1.10 Percentage of 6 year old Children not in School, by Commune, in 2008



**Note:** Calculated as a percentage of total 6 year old population

### 3.1.11 Number of 5 year old Children in each Commune in 2008

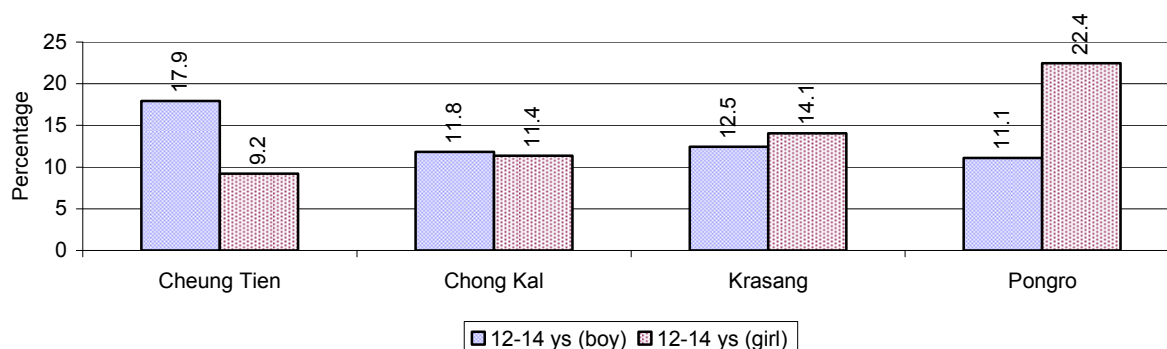


### 3.1.12 Enrolment at Lower Secondary Level over 3 years

Description	2006 %	2007 %	2008	
			%	Number
Total <b>children</b> aged 12-14 years old	9%	10%	8%	1,956 person(s)
Children aged 12-14 years old in school	84%	87%	87%	1,693 person(s)
Children aged 12-14 years old not in school	16%	13%	13%	263 person(s)
Total <b>girls</b> aged 12-14 years old	9%	9%	8%	974 person(s)
Girls aged 12-14 years old in school	88%	87%	86%	839 person(s)
Girls aged 12-14 years old not in school	12%	13%	14%	135 person(s)
Total <b>boys</b> aged 12-14 years old	9%	10%	9%	982 person(s)
Boys aged 12-14 years old in school	79%	86%	87%	854 person(s)
Boys aged 12-14 years old not in school	21%	14%	13%	128 person(s)

**Note:** Percentage is calculated on the basis of number of the total number of children within 12-14 yrs group, except for the first row of each section which is calculated on the basis of the total population.

### 3.1.13 Percentage of 12-14 year olds not in School, by Commune, in 2008



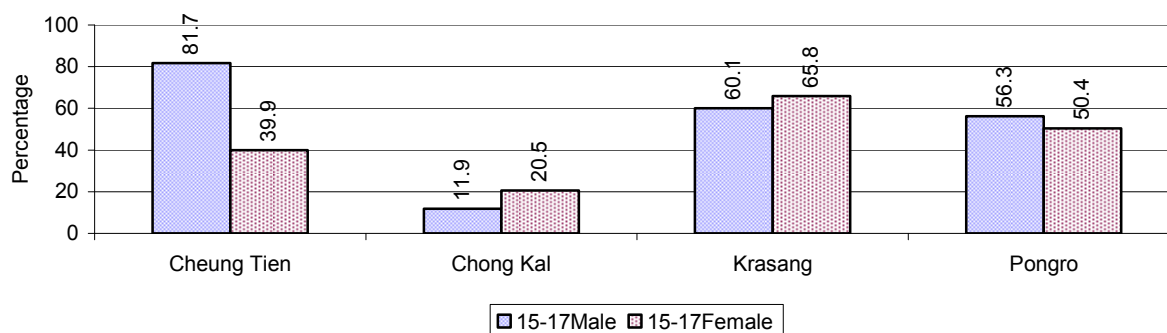
**Note:** Calculated as a percentage of the total 12-14 year old population in each commune

### 3.1.14 Upper Secondary Schools over 3 years

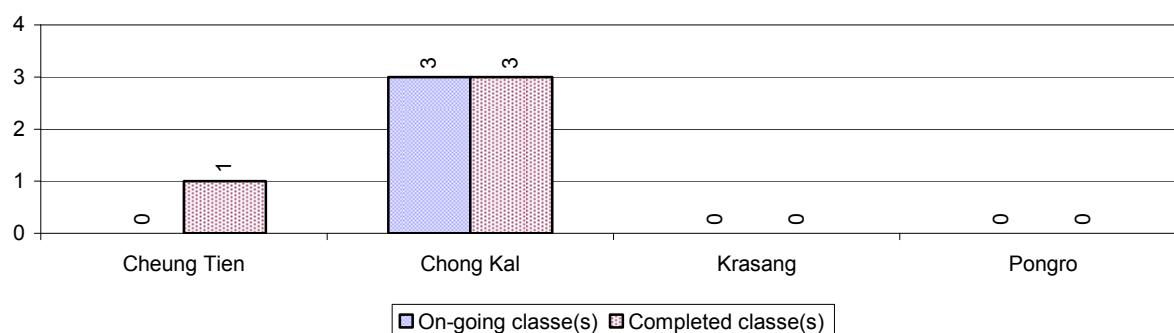
Description	2006	2007	2008
Number of upper secondary schools	0 school(s)	0 school(s)	0 school(s)
Number of upper secondary school rooms	0 room(s)	0 room(s)	0 room(s)
Number of upper secondary classes	0 class(es)	0 class(es)	0 class(es)
Number of upper secondary teachers	0 person(s)	0 person(s)	0 person(s)
Ratio of 15-17 yr olds to number of school	N/A	N/A	N/A
Ratio of 15-17 yr olds to number of school room	N/A	N/A	N/A
Ratio of 15-17 yr olds to number of classes	N/A	N/A	N/A
Ratio of 15-17 yr olds to number of teacher	N/A	N/A	N/A

**3.1.15 Enrolment of 15-17 year old teenagers over 3 years**

Description	2006	2007	2008
Number of teenage, 15-17 years old	1,767 person(s)	1,877 person(s)	2,387 person(s)
Number of teenage, 15-17 years old, who are not studying	677 person(s)	621 person(s)	1,277 person(s)
Percentage of teenage, 15-17 years old not studying	38%	33%	53%

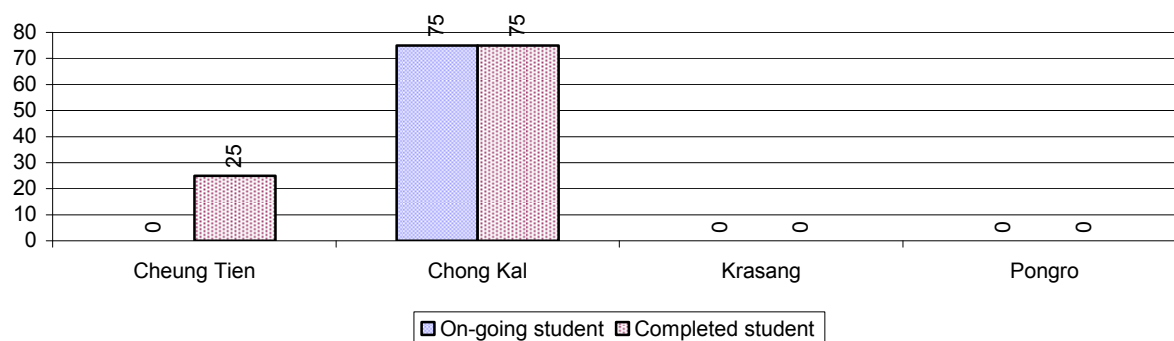
**3.1.16 Percentage of 15-17 year old Teenagers not at School, by Commune, in 2008****3.1.17 Literacy Classes as of 2008**

Literacy classes	Organized by:		Other Program(s)	Total
	PDoEYS	NGOs		
Number of On-going literacy classes	2 class(es)	0 class(es)	1 class(es)	3 class(e(s)
Number of literacy students in on-going classes	50 person(s)	0 person(s)	25 person(s)	75 person(s)
Completed literacy class(es)	3 classes	0 classes	1 classes	4 classes
Number of literacy students that have completed literacy classes	75 person(s)	0 person(s)	25 person(s)	100 person(s)
Number of students that passed	55 person(s)	0 person(s)	25 person(s)	80 person(s)

**3.1.18 Number of on-going and completed Literacy Classes, by Commune, in 2008**



### 3.1.19 Students of on-going & completed Literacy Classes, by Commune, in 2008

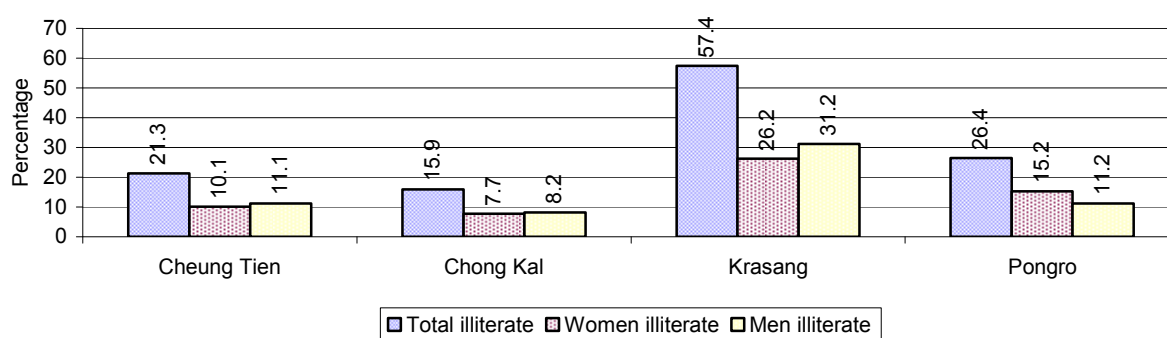


### 3.1.20 Percentage of illiterate People between 15-60, over 3 years

Illiteracy Status	2006 %	2007 %	2008	
			%	Number
Illiterate people, 15-60 years old	32%	29%	29%	4,235 person(s)
Illiterate females, 15-60 years old	18%	16%	14%	2,047 person(s)
Illiterate people, 15-17 years old	24%	13%	15%	347 person(s)
Illiterate females, 15-17 years old	11%	6%	7%	158 person(s)
Illiterate people, 18-24 years old	26%	22%	23%	753 person(s)
Illiterate females, 18-24 years old	13%	11%	11%	350 person(s)
Illiterate people, 25-60 years old	37%	36%	35%	3,135 person(s)
Illiterate females, 25-60 years old	22%	20%	17%	1,539 person(s)

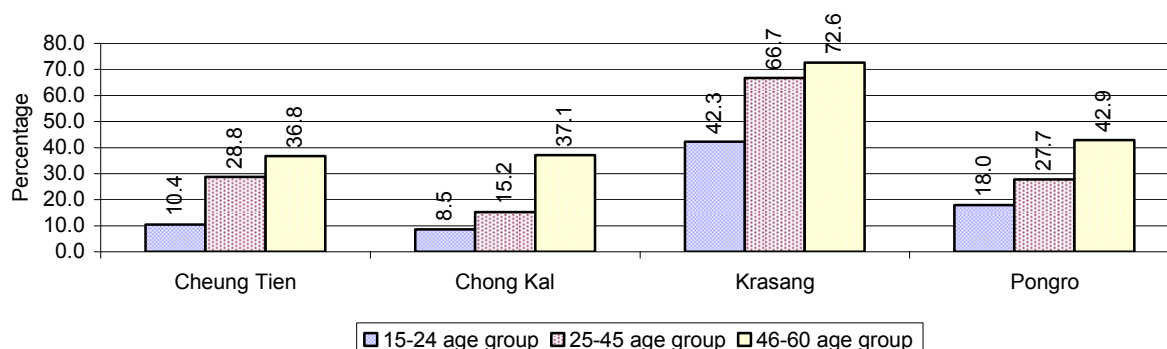
**Note:** Percentage is calculated on the basis of number of people in age each group.

### 3.1.21 Percentage illiterate People among 15-60 yrs old, by Commune, in 2008



**Note:** Percentages are calculated on the basis of number of people in that age group.

### 3.1.22 Percentage illiterate People for 15-24 yrs, 25-45 yrs and 46-60 yrs, by Commune, in 2008



**Note:** Percentage of illiterate people in each age group is calculated on the basis of number of people in that age group.

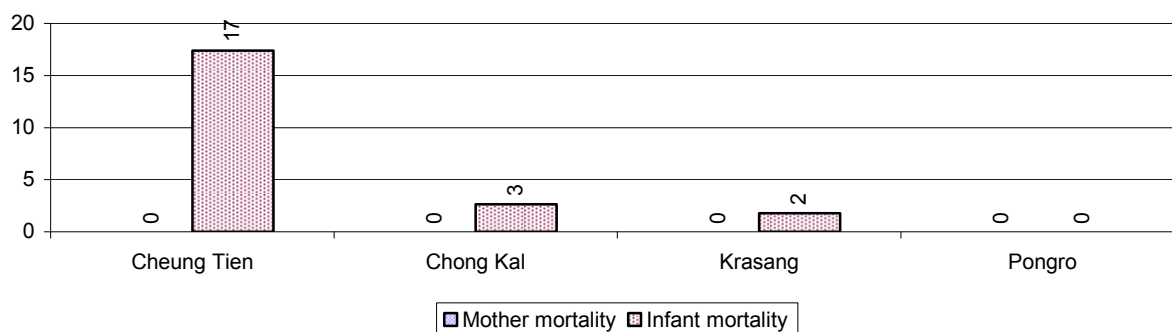
## 3.2 Health

### 3.2.1 Health Situation of Women and Children, over 3 years

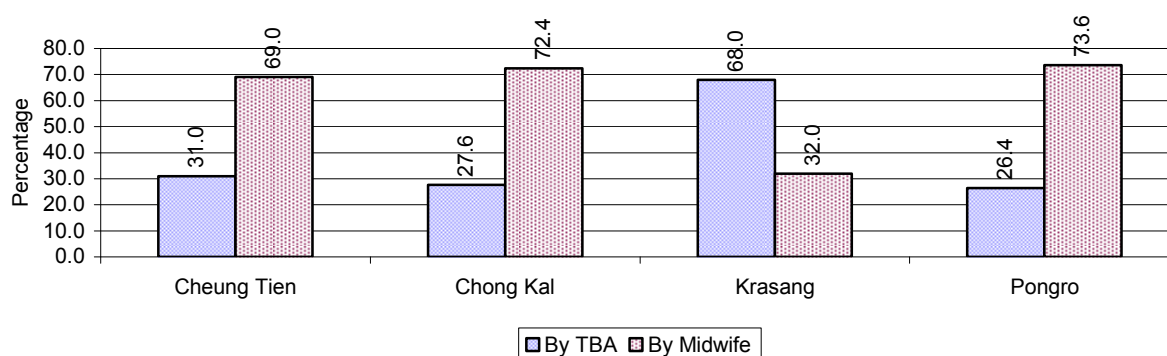
Description	2006	2007	2008
Number families with a birth during the year	281 families	400 families	357 families
Number of women who had their baby delivered by a TBA	200 person(s)	215 person(s)	140 person(s)
Percentage of women who had their baby delivered by a TBA	71 %	54 %	39 %
Number of women who had their baby delivered by a midwife	81 person(s)	185 person(s)	217 person(s)
Percentage of women had their baby delivered by a midwife	29 %	46 %	61 %
Number of mothers who died within 1 month of giving birth	0 person(s)	6 person(s)	0 person(s)
Mothers who died within 1 month of giving birth per 100,000 families having a delivery	0	1,500	0
Number of infants born during the year	284 person(s)	418 person(s)	357 person(s)
Number of Infants who died within 1 month	18 person(s)	10 person(s)	6 person(s)
Infants mortality within 1 month per 1,000 births	63	24	17
Number of children who died below the age of 5.	26 person(s)	10 person(s)	5 person(s)
Number of infants, aged 9-12 months, born during the year	176 person(s)	236 person(s)	181 person(s)
Nr. infants, aged 9-12 months, not receiving full immunization	12 person(s)	21 person(s)	9 person(s)
% of 9-12 months infants, not receiving full immunization	7 %	9 %	5 %

**Note:** TBA = Traditional Birth Attendant

### 3.2.2 Mothers dying within 0 days to 1 month of giving Birth and Infants dying within 1 month in 2008, by Commune

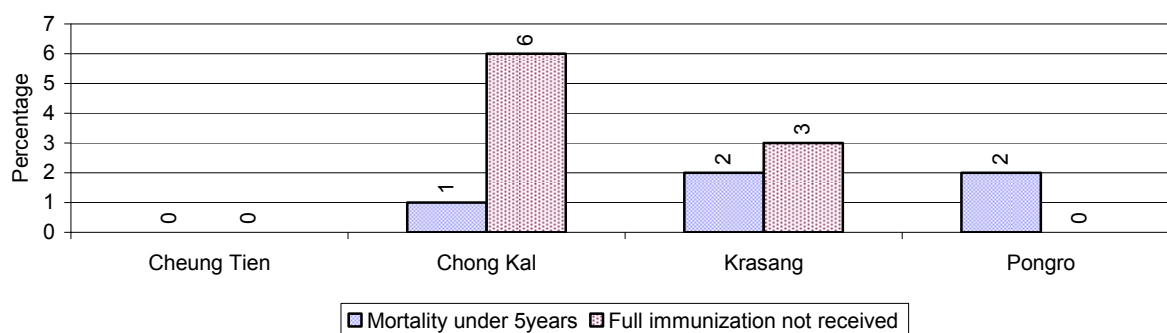


### 3.2.3 Percentage of Women delivering with a TBA or Midwife, by Commune



**Note:** Calculated as a percentage of total deliveries

### 3.2.4 Percentage of Children dying below 5 & of 9-12 months not receiving full Immunization, by Commune, in 2008



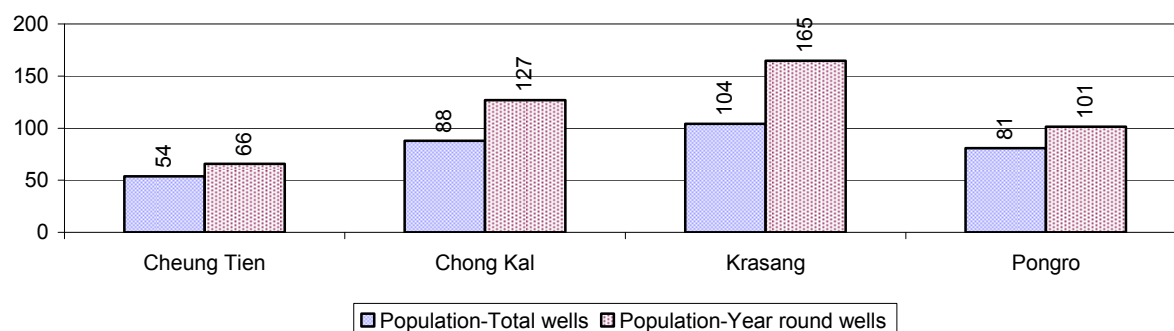
**Note:** Mortality rate calculated as a percentage of the total 5 year old population. Lack of immunization received calculated as a percentage of the total number 9-12 months olds there are

### 3.3 Water and Sanitation

#### 3.3.1 Number of different types of Wells over 3 years

Type of wells	Number of wells by year		
	2006	2007	2008
<i>Total number of pumped or mixed wells</i>	191	209	172
Year-round usable pumped or mixed wells	161	180	148
Dry season unusable pump or mixed wells	30	29	24
Pump or mixed wells needing repair/rehabilitation	27	25	43
<i>Total number of ring wells</i>	105	133	124
Year-round usable ring wells	68	86	70
Dry season unusable ring wells	37	47	54
Ring wells needing repair/rehabilitation	28	23	26
<i>Total number of unprotected dug wells</i>	21	21	25
Year-round usable unprotected dug wells	7	13	8
Dry season unusable unprotected dug wells	14	8	17

#### 3.3.2 Ratio of People to Wells, by Commune, in 2008

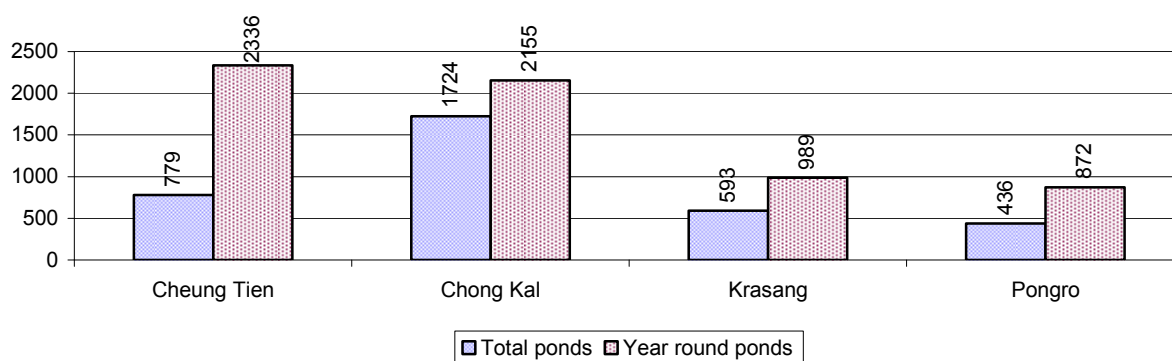


**Note:** Year-round wells excluding unprotected wells

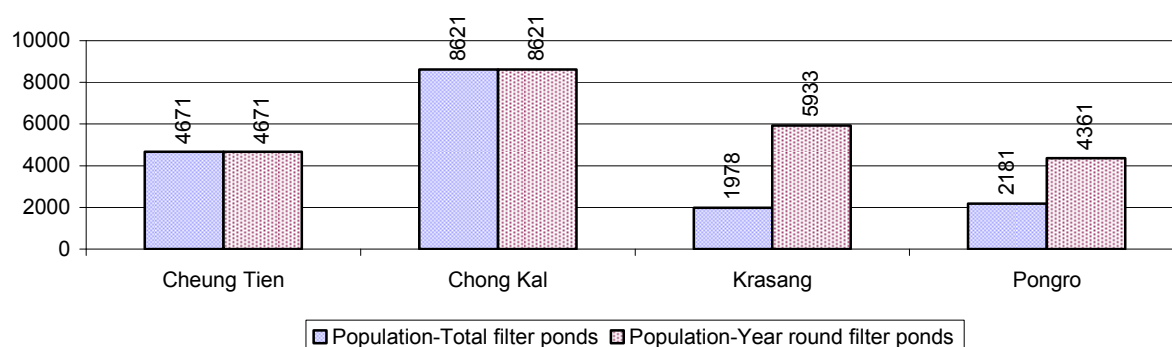
#### 3.3.3 Potable Ponds over 3 years

Type of Pond	2006	2007	2008
<i>Total number of normal-type ponds</i>	21 pond	27 pond	31 pond
Year-round usable normal-type ponds	12 pond	15 pond	17 pond
Dry season unusable normal-type ponds	9 pond	12 pond	14 pond
Normal-type ponds needing repair/rehabilitation	9 pond	16 pond	14 pond
<i>Total number of filter ponds</i>	9 pond	5 pond	7 pond
Year-round usable filter ponds	3 pond	0 pond	4 pond
Filter ponds, dry season unusable	6 pond	5 pond	3 pond
Filter ponds needing repair/rehabilitate	7 pond	8 pond	4 pond

### 3.3.4 Ratio of People to normal Ponds, by Commune in 2008



### 3.3.5 Ratio of People to Filter Ponds, by Commune, in 2008

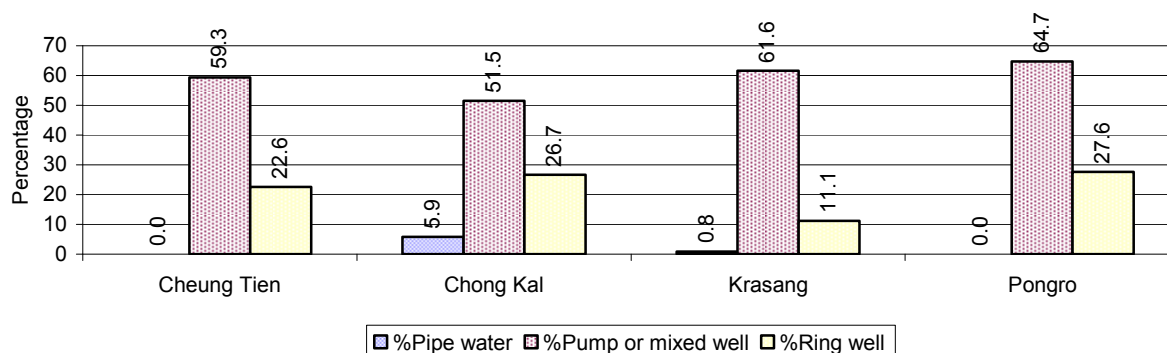


### 3.3.6 Source of potable Water for Households, over 3 years

Water sources	2006	2007	2008	
	%	%	%	Number
Families using water from purification system	1%	1 %	2 %	101 families
Families using water from pump, mixed wells	45%	50 %	58 %	2,707 families
Families using water from ring wells and open dug wells	19%	19 %	22 %	1,024 families
Families using water from pond	16%	20 %	14 %	632 families
Families using water from rain water storage	2%	0 %	0 %	1 families
Families using water from rivers, lakes, natural ponds and reservoirs	17%	10 %	4 %	165 families

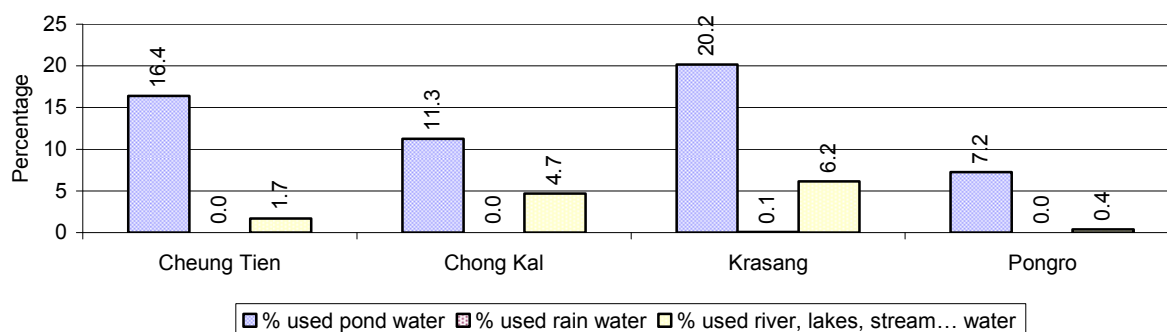
**Note:** Calculated as a percentage of the total number of families.

### 3.3.7 Percentage Families using different Water Sources, by Commune, in 2008



**Note:** Calculated as a percentage of the total number of families in each commune

### 3.3.8 Percentage Families using Water from Rain Water Storage, Ponds and natural Sources (rivers/lakes/natural ponds/reservoirs), by Commune, 2008



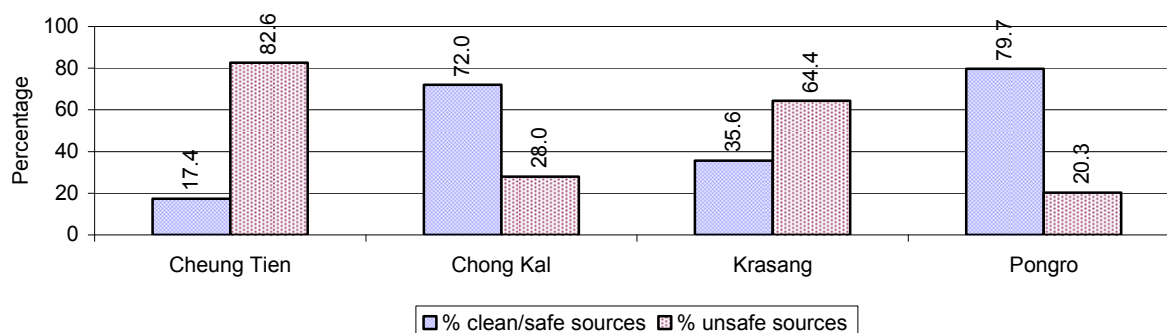
**Note:** Calculated as a percentage of the total number of families in each commune

### 3.3.9 Drinking Water Sources in the dry Season over 3 years

Percentage Families that get drinking water from:	2006	2007	2008	
	%	%	%	Number
from clean/safe sources	39 %	48 %	54 %	2,497 families
from unsafe sources	61 %	52 %	46 %	2,133 families

**Note:** Calculated as a percentage of the total number of families.

### 3.3.10 Percentage Families using safe and unsafe Water Sources in the dry Season, by Commune, in 2008



**Note:** Calculated as a percentage of the total number of families in each commune.

### 3.3.11 Drinking Water Purification by Households, over 3 years

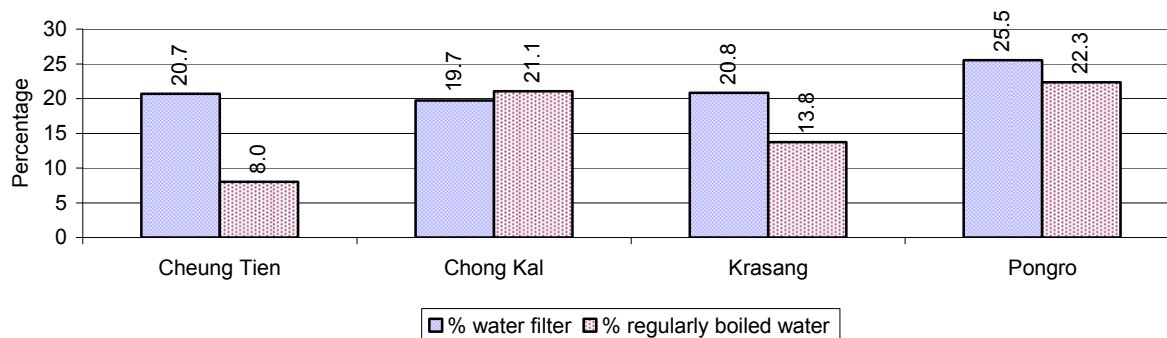
This table shows the different ways families make water safe for drinking.

Families, who:	2006	2007	2008	
	%	%	%	Number
Filter water for drinking	17%	23%	21 %	993 families
Boil water for drinking	19%	19%	17 %	786 families

**Note:** Calculated as a percentage of the total number of families

### 3.3.12 Percentage Families filtering Water or regularly boiling Water, by Commune, in 2008

This graph shows the different ways families make drinking water safe.



**Note:** Calculated on as a percentage of the total number of families in each commune.

### 3.3.13 Families' access to Water, over 3 years

Families access to water	2006 %	2007 %	2008	
			%	Number
Families with water at home or in less then 150m	28%	9%	8 %	388 families
Families with water 150m or more away from home	9%	5%	7 %	332 families

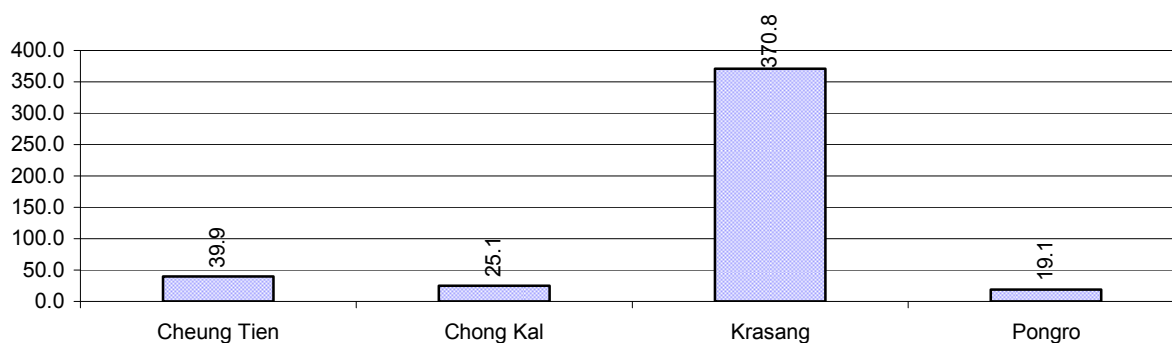
**Note:** Calculated as a percentage of the total number of families

### 3.3.14 Ratio of people to Latrines over 3 years

Description	2006 Ratio	2007 Ratio	2008	
			Ratio	Number
Ratio of people to latrines	38.2	32.6	33.5	704.0

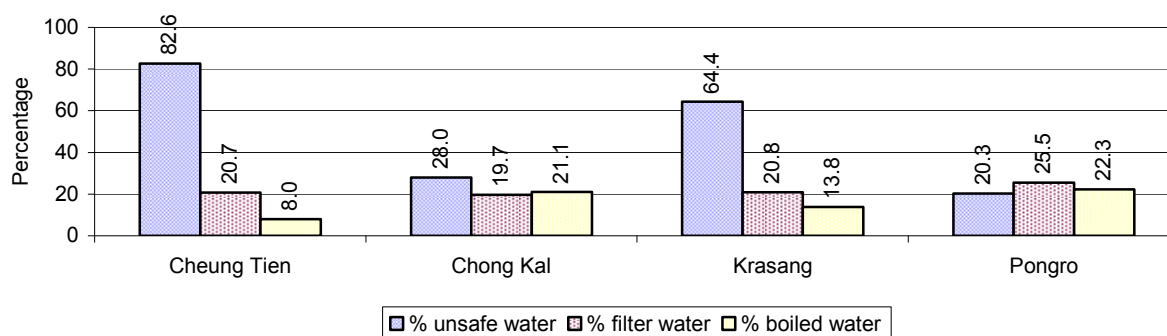
**Note:** Ratio calculated by dividing the number of houses with latrines by the total population

### 3.3.15 Ratio of People to Latrines, by Commune, in 2008



**Note:** Ratio calculated by dividing the number of houses with latrines by the total population in a Commune.

### 3.3.16 Percentage of Families drinking boiled, filtered or unsafe Water, by Commune, in 2008



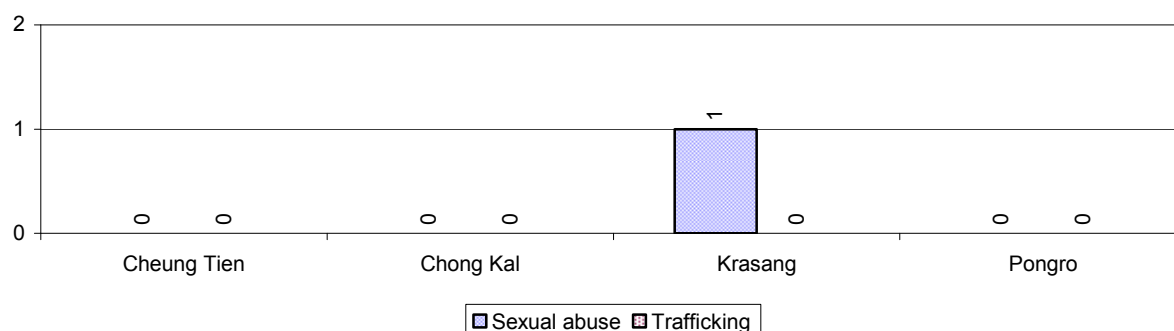
**Note:** Calculated as a percentage of the total number of families in each commune.

## 3.4 Vulnerable groups

### 3.4.1 Vulnerable Groups in need of special Protection over 3 years

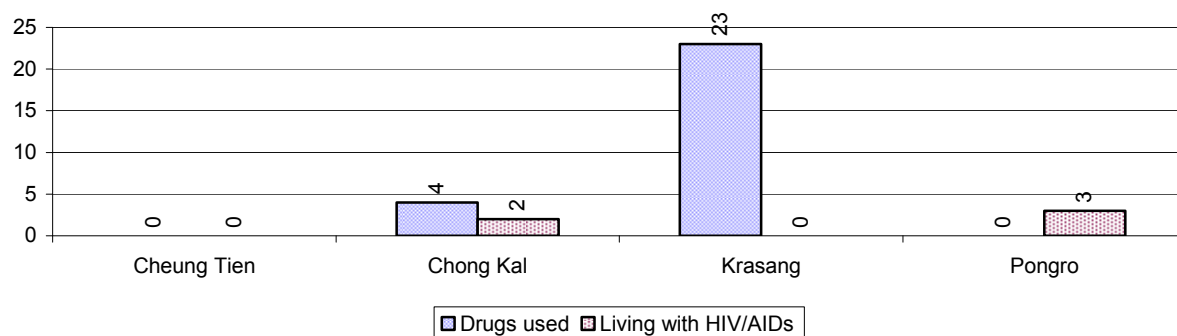
Vulnerable groups	2006	2007	2008
Victims of sexual abuse	0 person(s)	2 person(s)	1 person(s)
Victims of human trafficking	0 person(s)	0 person(s)	0 person(s)
Families with family member(s) using drugs	1 families	0 families	27 families
Families with family member(s) living with HIV/AIDS	6 families	3 families	5 families
Children under 18 yrs old whose parent died of AIDS	16 person(s)	12 person(s)	12 person(s)
Orphaned/abandoned children under 18 yrs old (all cases)	599 person(s)	95 person(s)	84 person(s)
Elderly persons without guardian	22 person(s)	14 person(s)	19 person(s)
Disabled people able to earn an income	92 person(s)	16 person(s)	11 person(s)
Disabled people unable to earn an income	21 person(s)	10 person(s)	25 person(s)
Disabled people under 18 yrs old	11 person(s)	6 person(s)	16 person(s)
Victims of natural disasters	593 families	865 families	359 families
Victims of land mines and unexploded weapons	14 person(s)	13 person(s)	20 person(s)

### 3.4.2 Registered Victims of sexual Abuse or Trafficking, by Commune, for 2008

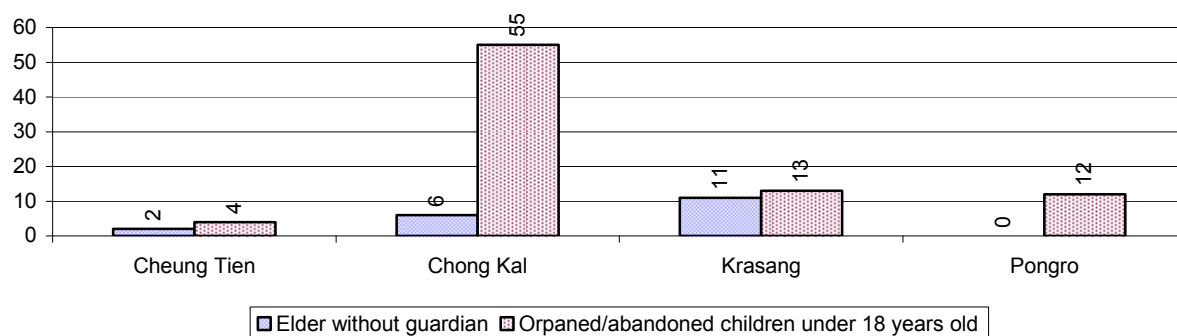




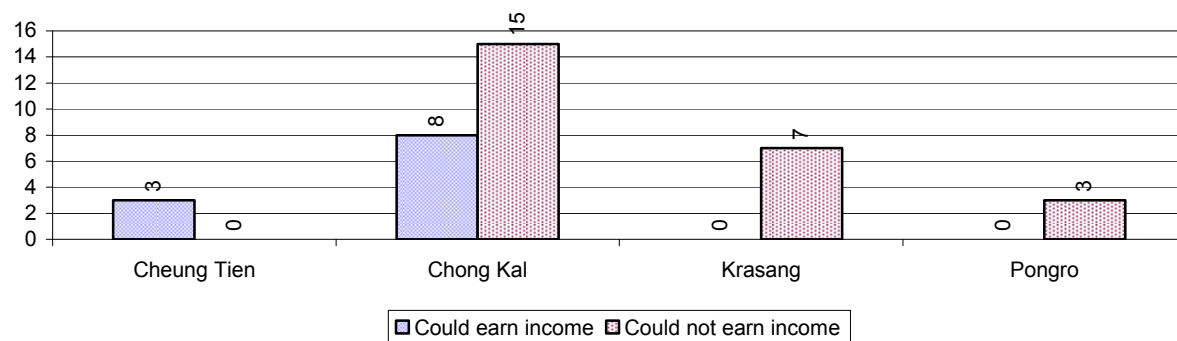
### 3.4.3 Registered Families with Member(s) using Drugs or living with HIV/AIDS, by Commune, for 2008



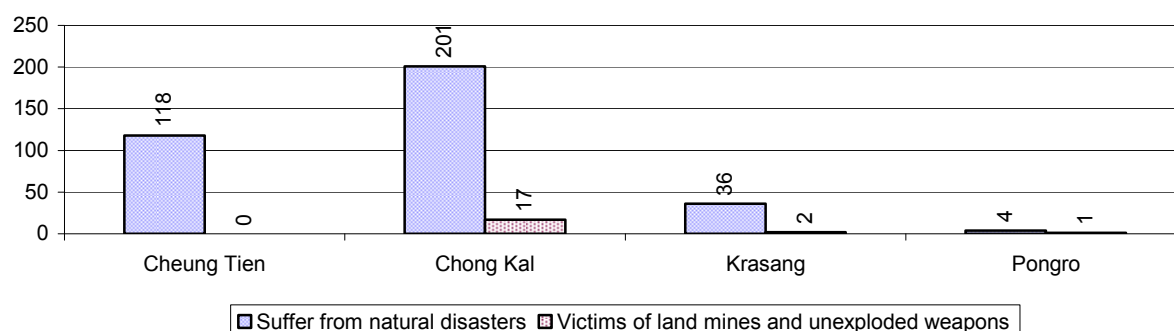
### 3.4.4 Elderly Persons without a Guardian and orphaned/abandoned Children under 18 years old, by Commune, for 2008



### 3.4.5 Number of disabled People who could or could not earn an Income, by Commune, for 2008



### 3.4.6 Number of Families who suffered from natural Disasters, and number of Victims of Land Mines and unexploded Weapons, by Commune, in 2008



## 3.5 Migration

### 3.5.1 Migration over 3 years

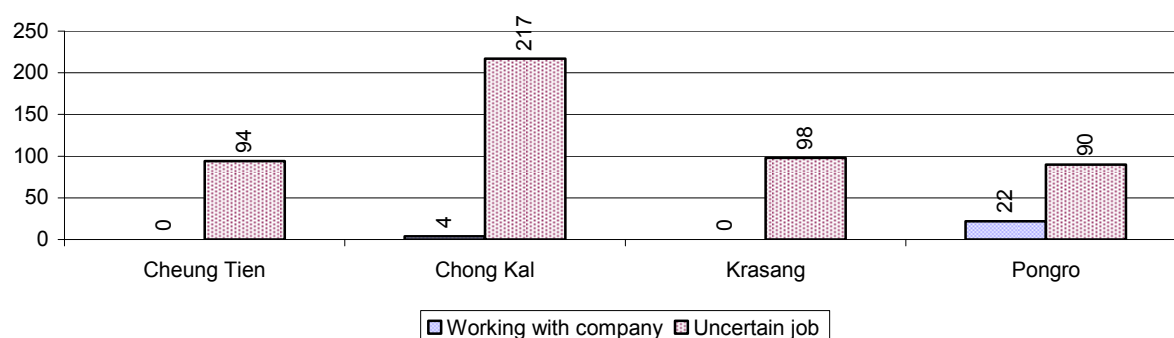
Description	2006	2007	2008
Number of families permanently in-migrated	43families	52 families	17 families
Total number of people	178 person(s)	193 person(s)	60 person(s)
Total number of female	92 person(s)	95 person(s)	28 person(s)
Number of families permanently out-migrated	16 families	25 families	33 families
Total number of people	65 person(s)	95 person(s)	145 person(s)
Total number of female	33 person(s)	50 person(s)	71 person(s)
Number of families staying temporarily	6 families	5 families	9 families
Total number of people	15 person(s)	12 person(s)	24 person(s)
Total number of female	6 person(s)	7 person(s)	14 person(s)

### 3.5.2 Job Migration

Description	2006	2007	2008
Number of people migrated to work with company/factory	0%	0%	0%
Number of people migrated to work, but have uncertain jobs	3%	4%	4%

**Note:** Calculated as a percentage of the total population of 18-60 year olds

### 3.5.3 Number of People working outside their home Villages in a Company/Factory or with an uncertain Job in 2008

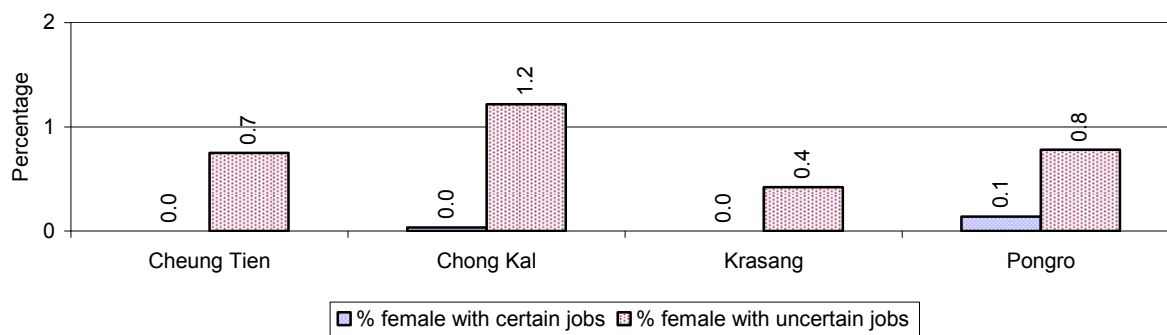


### 3.5.4 Female migration over 3 years

Description	2006 %	2007 %	2008	
			%	Number
Total number of migrants	1.6%	2.1%	2.2%	525 person(s)
Number of female migrants	0.6%	0.7%	0.9%	208 person(s)
Total number of migrants, who go to work with company/factory (with certain jobs)	0.0%	0.2%	0.1%	26 person(s)
Number of female migrants with certain jobs	0.0%	0.1%	0.0%	9 person(s)
Total number of migrants with uncertain jobs	1.6%	1.9%	2.1%	499 person(s)
Number of female migrants with uncertain jobs	0.6%	0.6%	0.8%	199 person(s)

**Note:** Calculated as a percentage of the total population

### 3.5.5 Percentage female Migrants with certain and uncertain Jobs, by Commune, in 2008



**Note:** Calculated as a percentage of the total population of the commune

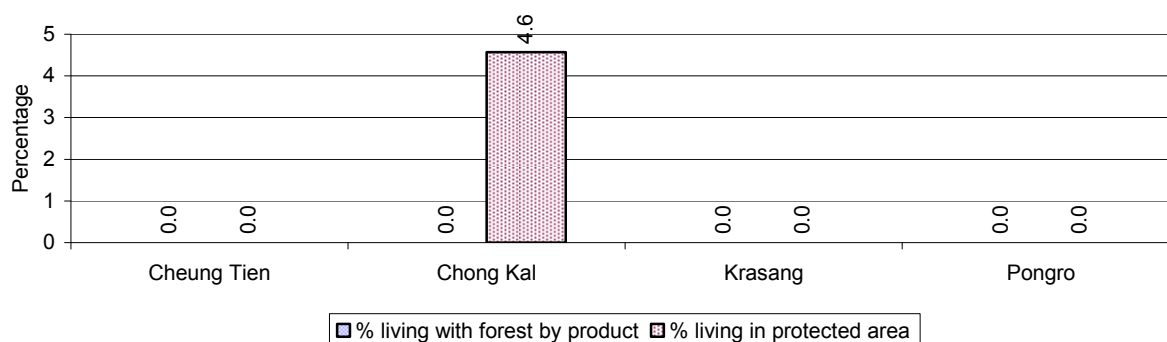
## 4 Natural Resources and Environment (NRE)

### 4.1 Families involved with NRE issues over 3 years

Description	2006 %	2007 %	2008	
			%	Number
Families living with forest by products	0 %	0 %	0 %	0 families
Families living in a protected area	0 %	0 %	2 %	71 families
Houses with access to garbage collection service	0 %	0 %	0 %	0 families
Families affected by environmental pollution	0 %	2 %	0 %	0 families
Families using chemical fertilizer	89 %	85 %	92 %	4,267 families
Families using chemical pesticide	8 %	6 %	19 %	902 families

**Note:** Calculated as a percentage of the total number of families

### 4.2 Percentage of Families involved with Natural Resource issues, by Commune, for 2008



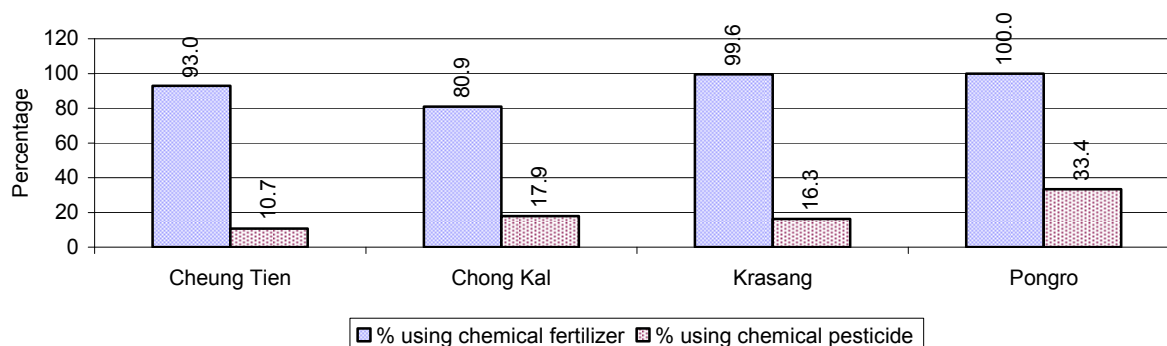
**Note:** Calculated as a percentage of the number of families in each commune

### 4.3 Percentage Houses with access to Garbage collection and Families affected by environmental Pollution, by Commune, for 2008

There were no houses with access to garbage collection and there were no families affected by environmental pollution in this District in 2008

**Note:** Garbage collection is calculated as a percentage of the total number of houses in each commune and families affected by environmental pollution is calculated as a percentage of the total number of families in each commune.

### 4.4 Percentage Families using chemical Fertilizer and chemical Pesticides, by Commune, for 2008



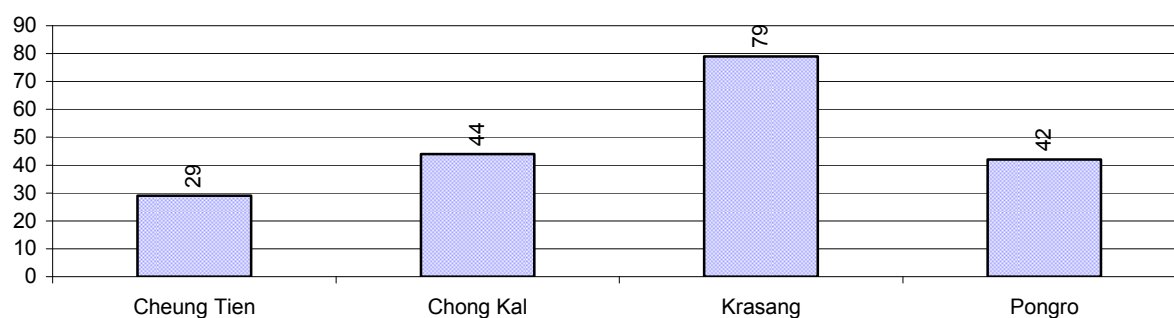
**Note:** Calculated as a percentage of the total number of families in each commune

## 5 Administration and Security

### 5.1 Birth Registration across 3 years

Description	2006	2007	2008
Number of infants to be registered	266 person(s)	408 person(s)	351 person(s)
Number of unregistered infants the year	151 person(s)	323 person(s)	194 person(s)
Percentage of infants unregistered	57 %	79 %	55 %

### 5.2 Number of unregistered Infants born in 2008, by Commune

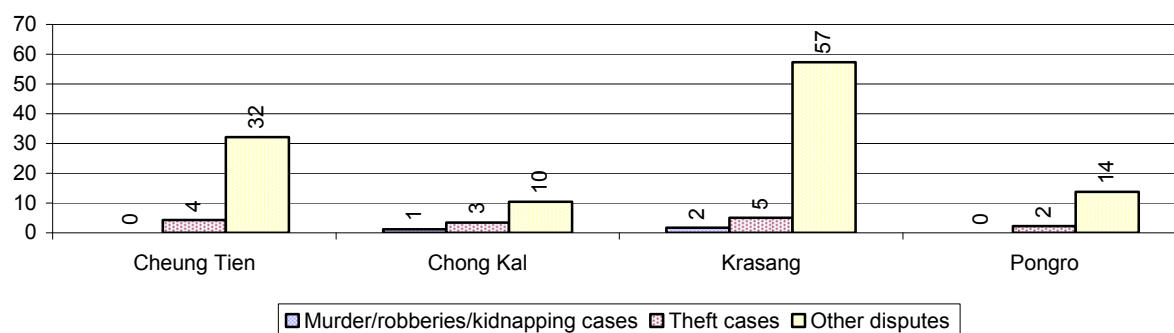


### 5.3 Registered criminal Cases over 3 years

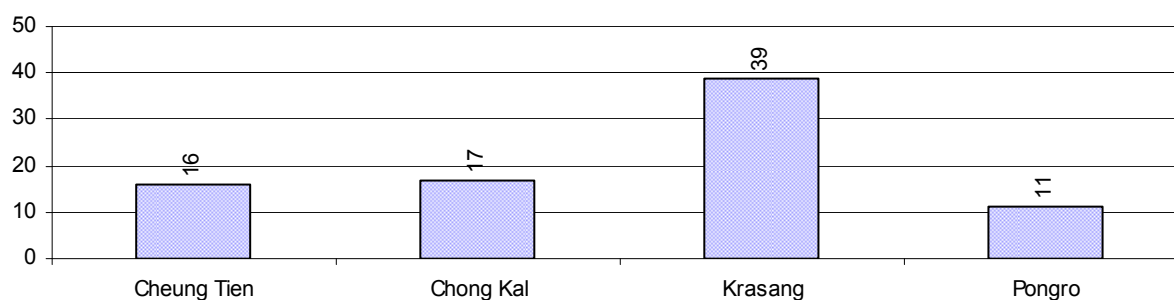
Description	2006	2007	2008
Murders, robberies and kidnapping cases	4 case(s)	1 case(s)	2 case(s)
Theft cases	66 case(s)	39 case(s)	9 case(s)
land dispute cases	140 case(s)	86 case(s)	83 case(s)
Other disputes cases	68 case(s)	73 case(s)	64 case(s)

*Note: this reflects only registered criminal cases*

### 5.4 Registered criminal Cases per 10,000 people, by Commune, for 2008



### 5.5 Number of registered Land Disputes, by Commune, in 2008

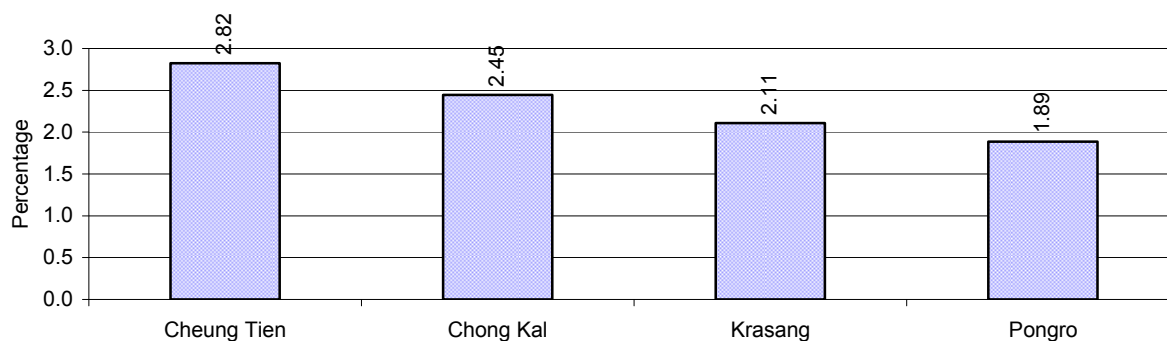


## 6 Gender

### 6.1 Registered Domestic Violence over 3 years

Description		2006	2007	2008
Families experiencing domestic violence		157 families	149 families	107 families(s)
% families experiencing domestic violence		4 %	3 %	2 %
Domestic violence cases reported by village chiefs		91 case(s)	134 case(s)	157 case(s)
Type	Physical violence	23 case(s)	82 case(s)	86 case(s)
	Sexual violence	0 case(s)	3 case(s)	3 case(s)
	Mental violence	49 case(s)	37 case(s)	30 case(s)
	Household economic violence	19 case(s)	12 case(s)	38 case(s)
Number of administrative decisions on domestic violence		0 case(s)	78 case(s)	132 case(s)
% of administrative decisions on domestic violence		0 %	58 %	84 %

### 6.2 Percentage of registered cases of Families experiencing domestic Violence, by Commune, in 2008



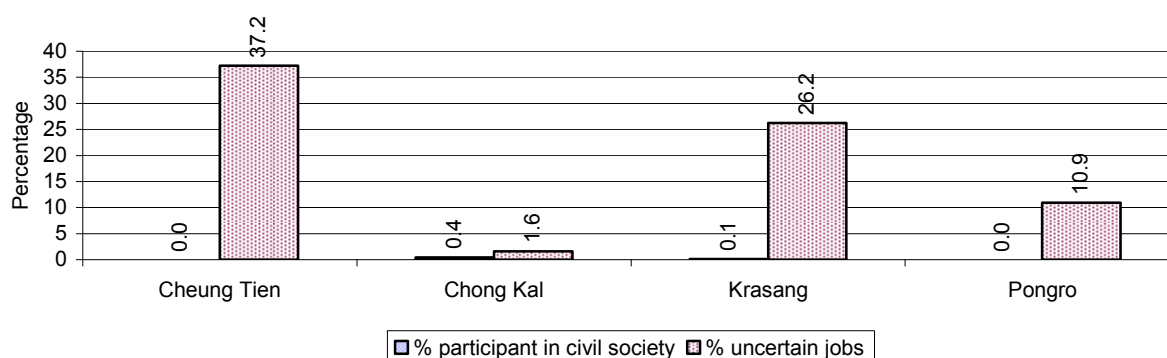
**Note:** Calculated as a percentage of the total number of families in each commune

### 6.3 Women's involvement over 3 years

Description	2006 %	2007 %	2008	
			%	Number
People participating in civil society	0%	1%	1%	141 person(s)
Women participating in civil society	0%	0%	0%	45 person(s)
People, 18-60 yrs, with uncertain/irregular jobs	11%	5%	34%	4,142 person(s)
Women, 18-60 yrs, with uncertain/irregular jobs	5%	3%	16%	1,913 person(s)

**Note:** Participation can be in NGOs, CBOs, credit groups, women's unions, parties and other civil society organizations. The first section is calculated as a percentage of the total population. The second section is calculated as a percentage of the total 18-60 year old population.

#### 6.4 Percentage of Female Participants in Civil Society and of 18-60 year women with uncertain Jobs, by Commune, in 2008



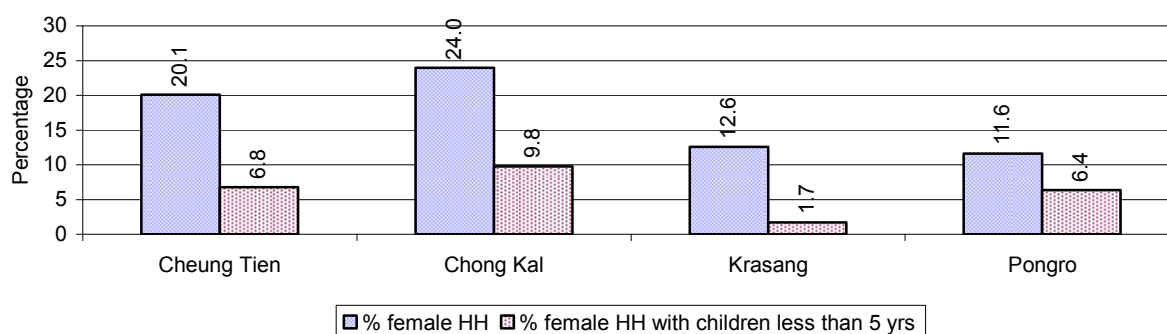
**Note:** Percentage of female participants in civil society is calculated as a percentage of the total population per commune. The percentage of 18-60 years old women with uncertain jobs is calculated as a percentage of the total 18-60 year old population per commune.

#### 6.5 Female-headed Households over 3 years

Families with:	2006	2007	2008	
	%	%	%	Number
Households in which a woman is the family head	16%	18%	18%	816 families
Households in which a woman is the family head with children of less than 5 yrs	5%	7%	6%	296 families

**Note:** Calculated as a percentage of the total number of families

#### 6.6 Percentage female-headed Households and with Children of less than 5 years old, by Commune, in 2008



**Note:** Calculated as a percentage of the total number of families in each commune

HH: Headed Household

## 7 Indigenous People in the District

### 7.1 Ethnic Minorities in the District over 3 years

Race of indigenous	2006		2007		2008	
	# families	# population	# families	# population	# families	# population
Phnong	0 families	0 person(s)	0 families	0 person(s)	0 families	0 person(s)
Kouy	0 families	0 person(s)	0 families	0 person(s)	0 families	0 person(s)
Stieng	0 families	0 person(s)	0 families	0 person(s)	0 families	0 person(s)
Mil	0 families	0 person(s)	0 families	0 person(s)	0 families	0 person(s)
Kroal	0 families	0 person(s)	0 families	0 person(s)	0 families	0 person(s)
Thmorn	0 families	0 person(s)	0 families	0 person(s)	0 families	0 person(s)
Khaonh	0 families	0 person(s)	0 families	0 person(s)	0 families	0 person(s)
Tompouonn	0 families	0 person(s)	0 families	0 person(s)	0 families	0 person(s)
Charay	0 families	0 person(s)	0 families	0 person(s)	0 families	0 person(s)
Kroeung	0 families	0 person(s)	0 families	0 person(s)	0 families	0 person(s)
Kavet	0 families	0 person(s)	0 families	0 person(s)	0 families	0 person(s)
Saouch	0 families	0 person(s)	0 families	0 person(s)	0 families	0 person(s)
Lun	0 families	0 person(s)	0 families	0 person(s)	0 families	0 person(s)
Kachak	0 families	0 person(s)	0 families	0 person(s)	0 families	0 person(s)
Praov	0 families	0 person(s)	0 families	0 person(s)	0 families	0 person(s)
Others	0 families	0 person(s)	0 families	0 person(s)	0 families	0 person(s)
<b>Total</b>	0 families	0 person(s)	0 families	0 person(s)	0 families	0 person(s)

**Note:** "Others" refer to other ethnic groups which are not listed.

### 7.2 Other Minorities in the District over 3 years

Minority	2006		2007		2008	
	# families	# population	# families	# population	# families	# population
Khmer Islamic	0 families	0 person(s)	0 families	0 person(s)	0 families	0 person(s)
Vietnamese	0 families	0 person(s)	0 families	0 person(s)	3 families	4 person(s)
Laos	0 families	0 person(s)	0 families	0 person(s)	0 families	0 person(s)

**Note:** Number of indigenous and minority population are additional data, so some village may not recorded.



## **SECTION C: PLANS AND PROJECTS**



## 8 Priorities and Plans

### 8.1 Priorities of Commune Councils for 2009 in the District by Sector

The District Priority Activity Matrix (DPAM) data are taken from the CDPD. The DPAM is used for the District Integration Workshop (DIW), to show what kind of projects the commune has proposed in their Commune Investment Plan (CIP) for 2009. Donors, departments and other agencies then consider which projects they want to support and which projects they are not interested in. This results in Temporary Agreements between the Commune Council and the Supporter (NGO, Department, private donor, etc), as shown in table 8.2

No.	Project Name	Cheung Tien	Chong Kal	Krasang	Pongro	Req.Project
		220301	220302	220303	220304	Total
Economic						
1	Compost fertilizer training	7 training	7 training	8 training	7 training	5
2	Vegetable growing training	7 training		8 training		2
3	Mixed farming system training			8 training	9 training	2
4	Natural rice cultivation practice			8 training	6 training	2
5	Rice cultivation technique training	7 training				1
6	Animal vaccination request	1576 Head	7 time	2 time		3
7	Village veterinary training	7 training		2 training		3
8	Animal raising training	7 training			6 training	2
9	Rice seed request	437 Kg	7000 Kg	34 T	19380 Kg	4
10	Vegetable seeds request	175 Kg	100 Kg	582 Kg	1938 Kg	4
11	Chicken request	700 Head			304 Head	2
12	Chemical fertilizer request				371 bag	1
13	Family fish pond construction	2 Pond	20 Pond		3 Pond	3
14	Fish raising training		2 training			1
15	Fish fingerling request	3600 fingerling				1
16	Earth road repair/construction		5400 m			2
17	Laterite road repair/construction		3200 m		3000 m	2
18	Culvert repair/construct		24 place		13 place	2
19	Bridge repair/construction		20 m			1
20	Earth road construction	480 m		16020 m	16787 m	5
21	Laterite/natural gravel road construction	400 m		3318 m		3
22	Culvert construction	15 place		40 place		2
23	Bridger construction			16 place		1
24	Earth road repairing			3300 m		1
25	Irrigation system construction/renovation		5000 m		3200 m	2

District Data Book 2009: Development Plans and Projects

No.	Project Name	Cheung Tien	Chong Kal	Krasang	Pongro	Req.Project
		220301	220302	220303	220304	Total
26	Closed dam across canal construction/repair		3000 m		1650 m	2
27	Water pump				3 set	1
28	Weir construction/repair				2 place	1
29	Canal construction	1000 m				1
30	Dam construction	460 m		930 m		2
31	Spillway construction			2 place		1
32	Water gate plug construction			1 place		1
33	Dam repairing	50 m		275 m		2
34	Agriculture tools credit		140 set		266 set	2
35	Cow bank		101 Head		315 Head	2
36	Pig bank		75 Head		304 Head	2
37	Livestock bank		516 Head			1
38	Fish fingerling credit		25000 fingerling		2100 fingerling	2
Social						
1	Family planning	7 training	7 time			2
2	Antenatal care service accessibility improvement	7 training	7 training			2
3	Reproductive health training for VHV				1 training	1
4	Health/hygiene education for local people		7 training			1
5	Nutrition awareness education		7 training			1
6	Children immunization provision	7 training				1
7	Children and women vaccination			5 time		1
8	Women immunization		4 time			1
9	Health center committee strengthening				6 training	2
10	TBA training	1 training		1 training		2
11	Mosquito nets distribution/treatment			2328 mosqui-net		1
12	Mosquito larvae removal treatment	1684 package	1441 package	1164 package		3
13	Birth delivery package/birth attendant equipment need		7 training			1
14	Health post construction/renovation	1 building		1 building		2
15	Maternal health care education	7 training				1
16	Breastfeeding awareness education	7 training				1
17	Pond water construction/rehabilitation		1 Pond			1
18	Well digging		14 well		18 well	2
19	Latrine construction	420 toilet	500 toilet	1142 toilet		3

District Data Book 2009: Development Plans and Projects

No.	Project Name	Cheung Tien	Chong Kal	Krasang	Pongro	Req.Project
		220301	220302	220303	220304	Total
20	Sanitation day campaign organizing			8 training		1
21	Water filter equipment supply	500 Container	435 Container		540 Container	3
22	Giant water jar provision	400 Jar		1164 Jar		2
23	Family wate jars provision		150 Jar	1145 Container		2
24	Pump wells construction	9 well				1
25	Ring wells construction			300 well		1
26	Ponds construction			3 Pond		1
27	Pump wells repairing	20 well				1
28	Ponds repairing	1 Pond		1 Pond		2
29	Literacy class	2 class	7 class		3 class	3
30	Literacy teacher support	2 person				1
31	Literacy class materials support	2 class	4 schools		3 schools	3
32	Junior high school construction	1 building				1
33	Senior high school construction		1 building			1
34	School building	1 building		3 building		2
35	Primary school creation/construction		1 building			2
36	Kindergarten school construction/repair		6 class	6 class		2
37	Kindergarten equipment provision	7 class		8 schools		2
38	Motivating pupil's parents for school enrollment	7 training		8 training		2
39	Teacher/volunteer teacher need	14 person				1
40	Poor pupils enrollment support			8 village		1
41	Scholarship provision to poor pupils			8 schools		1
42	Artificial limbs/handcart provision/repair				12 set	1
43	Skill training for disabled person				6 training	1
44	Food/materials support to orphan	7 class	3 time			2
<b>NREM</b>						
1	Environmental awareness and law education		7 training		1 training	2
2	Forestry law education			8 training		1
3	Wildlife protection law education			8 training		1
4	Organizing tree planting day			1 time	1 time	2
5	Illegal fishing prevention	7 training			1 training	2
6	Fish habitat/fish species protection/conservation				1 training	1
7	Fish raising community support		1 time			1
8	Forest protection strengthening	7 training			1 training	2

District Data Book 2009: Development Plans and Projects

No.	Project Name	Cheung Tien	Chong Kal	Krasang	Pongro	Req.Project
		220301	220302	220303	220304	Total
9	Temple/cultural ancient protection strengthening	7 training				1
10	Sanitation awareness poster installation				12 training	1
<b>Administration and Security</b>						
1	Civil registration encouragement	7 training	7 time	8 training		4
2	Administration and commune law training			1 training		1
3	Human rights and law training				3 training	1
4	Commune office construction/renovation	1 building	1 building			2
5	Land law dissemination	7 training	7 training	8 training	1 training	4
6	Provision of land titles/certificates		7 training			1
7	Local security strengthening				1 place	1
8	Stealing elimination activation			1 time		1
9	Gangs gathering educated for local security			8 training		1
10	Abused/violated/illegal acts quelled activation		1 time			1
11	Police post construction/renovation		1 building			1
12	Traffic sign installation		7 village			1
13	Traffic accident prevention		7 time			1
14	Demining project			5 ha	4 ha	2
15	Human right and related law education			8 training		1
16	Penal and civil law dissemination	7 training				1
17	Traffic law and public order dissemination	7 training		8 training		2
18	Wedding/family law dissemination	7 training				1
<b>Gender</b>						
1	Gender mainstreaming concept training			8 training		1
2	Gender mainstreaming among local people	7 training	7 training			2
3	Women and men roles/rights dissemination		7 training			1
4	Women vocational training	1 training	7 training	8 training	3 training	4
5	Law against domestic violence dissemination	7 training	7 training	8 training	12 training	4
6	Law against trafficking dissemination	7 training				1

**Source:** CDPD – District Priority Matrix

## 8.2 Temporary Agreements by Commune, for 2009<sup>2</sup>

At the District Integration Workshop (DIW) the Supporters (donors, agencies, private donors, NGOs, etc.) identify which projects/activities they would like to support or they put forward their own projects to be implemented in a particular commune. Once there is agreement between Commune Councils and Supporters on specific projects a **Temporary Agreement** is signed by the commune and the Supporter to show their mutual commitment to the identified projects/activities.

It is important to keep in mind that such Temporary Agreements do not necessarily result in implementation.

### 8.2.1 Temporary Agreements for 2009 as per DIW 2008 for Commune: Cheung Tien

Commune GIS	Commune	Temporary Agreements				Supporter	Funding Source	Listed in CIP before DIW
		Project Name	Quantity	Unit	Est.Cost (K.Riels)			
Economic								
220301	Cheung Tien	Village veterinary training	1	training	1244	Department of Agriculture Forestry and Fisheries		✓
Social								
220301	Cheung Tien	Immunization of 7 type of vaccines	96	training	2016	Department of Health		<input type="checkbox"/>
220301	Cheung Tien	PPEY budget support to school	1	schools	0	Department of Education Youth and Sports		<input type="checkbox"/>
220301	Cheung Tien	Teachers supply to every education level	1	schools	0	Department of Education Youth and Sports		<input type="checkbox"/>
220301	Cheung Tien	Kindergarten class, community program	1	schools	0	Department of Education Youth and Sports		<input type="checkbox"/>
220301	Cheung Tien	Teachers refresher training	1	schools	0	Department of Education Youth and Sports		<input type="checkbox"/>
220301	Cheung Tien	Household sanitation education	12	training	0	Department of Health		<input type="checkbox"/>
220301	Cheung Tien	Children immunization provision	0	training	0	Cambodian Red Cross		✓
220301	Cheung Tien	Teachers refresher training	1	schools	0	Department of Education Youth and Sports		<input type="checkbox"/>
220301	Cheung Tien	Morning meals provision program	1	schools	0	Department of Education Youth and Sports		<input type="checkbox"/>
220301	Cheung	Latrine maintenance	1	training	0	Cambodian Red Cross		<input type="checkbox"/>

<sup>2</sup> Not all the data from the CDPD has been translated to English, this has resulted in some cells in the TA tables being blank.

District Data Book 2009: Development Plans and Projects

Commune GIS	Commune	Temporary Agreements				Supporter	Funding Source	Listed in CIP before DIW
		Project Name	Quantity	Unit	Est.Cost (K.Riels)			
	Tien							
220301	Cheung Tien	Wells maintenance	1	training	0	Cambodian Red Cross		<input type="checkbox"/>
220301	Cheung Tien	Pump wells repair	8	well	0	Department of Rural Development		<input type="checkbox"/>
220301	Cheung Tien	Child friendly program strengthening	1	schools	0	Department of Education Youth and Sports		<input type="checkbox"/>
220301	Cheung Tien	Water quality control	8	well	0	Department of Rural Development		<input type="checkbox"/>
220301	Cheung Tien	Health care and hygiene education	12	training	0	Cambodian Red Cross		<input type="checkbox"/>
220301	Cheung Tien	Family planning	48	training	1344	Department of Health		<input type="checkbox"/>
220301	Cheung Tien	TBA training	4	training	1344	Department of Health		<input type="checkbox"/>
220301	Cheung Tien	Tuberculosis cases searching	4	training	1024	Department of Health		<input type="checkbox"/>
220301	Cheung Tien	Pin Peat music and traditional art performance training to Choeun Tien commune	1	Time	6000	Department of Culture and Fine Arts		<input type="checkbox"/>
220301	Cheung Tien	Scholarship for poor pupils	1	schools	0	Department of Education Youth and Sports		<input type="checkbox"/>
220301	Cheung Tien	Pump wells repair	0	well	0	Department of Rural Development		✓
220301	Cheung Tien	Family planning	0	time	0	Department of Health		✓
220301	Cheung Tien	TBA training	0	training	0	Department of Health		✓
220301	Cheung Tien	Family planning	0	time	0	Department of Health		✓
220301	Cheung Tien	Pump wells repairing technique training	8	well	0	Department of Rural Development		<input type="checkbox"/>
NREM								
220301	Cheung	Forest protection strengthening	0	training	0	Department of Environment		✓



District Data Book 2009: Development Plans and Projects

Commune GIS	Commune	Temporary Agreements				Supporter	Funding Source	Listed in CIP before DIW
		Project Name	Quantity	Unit	Est.Cost (K.Riels)			
	Tien							
220301	Cheung Tien	Two billboard installation	2	piece	0	Department of Environment		<input type="checkbox"/>
220301	Cheung Tien	Environmental awareness and law education	3	training	0	Department of Environment		<input type="checkbox"/>
Administration and Security								
220301	Cheung Tien	Labor law dissemination	1	training	400	Department of Labor and Vocational Training		<input type="checkbox"/>
Gender								
220301	Cheung Tien	Domestic violence law and victim protection forum organizing	1	time	256	Department of Women		<input type="checkbox"/>
220301	Cheung Tien	Law against trafficking dissemination	0	training	0	Department of Tourism		✓
220301	Cheung Tien	Law against domestic violence dissemination	0	training	0	Department of Women		✓
220301	Cheung Tien	Female village leader, WCFPs and female councilors forum support	2	training	565	Department of Women		<input type="checkbox"/>
220301	Cheung Tien	Annual provincial level workshop on WCFPs activities reflection	1	training	256	Department of Women		<input type="checkbox"/>
220301	Cheung Tien	Pictorial maternity education training to CCWC	1	time	500	Department of Women		<input type="checkbox"/>
220301	Cheung Tien	District level training on community kindergarten operation	1	time	307	Department of Women		<input type="checkbox"/>
220301	Cheung Tien	WCC meeting on gender mainstreaming in sectoral plan	1	time	256	Department of Women		<input type="checkbox"/>
220301	Cheung Tien	District and commune woman focal point capacity strengthening	1	time	99	Department of Women		<input type="checkbox"/>

**8.2.2 Temporary Agreements for 2009 as per DIW 2008 for Commune: Chong Kal**

Commune GIS	Commune	Temporary Agreements				Supporter	Funding Source	Listed in CIP before DIW
		Project Name	Quantity	Unit	Est.Cost (K.Riels)			
Social								
220302	Chong Kal	Health/hygiene education for local people	0	training	0	Cambodian Red Cross		✓
220302	Chong Kal	Child gathering for vaccinating	12	training	0	Cambodian Red Cross		□
220302	Chong Kal	Wells maintenance	12	Time	0	Cambodian Red Cross		□
220302	Chong Kal	Pump wells repairing technique training	5	well	0	Department of Rural Development		□
220302	Chong Kal	PPEY budget support to school	1	schools	0	Department of Education Youth and Sports		□
220302	Chong Kal	Pump wells repair	5	well	430	Department of Rural Development		□
220302	Chong Kal	Water quality control	5	well	0	Department of Rural Development		□
220302	Chong Kal	Community primary relief	12	training	0	Cambodian Red Cross		□
220302	Chong Kal	Latrine maintenance	12	training	0	Cambodian Red Cross		□
220302	Chong Kal	Women immunization	0	time	0	Cambodian Red Cross		✓
220302	Chong Kal	Family planning	0	time	0	Department of Health		✓
220302	Chong Kal	Immunization of 7 type of vaccines	144	training	0	Department of Health		□
220302	Chong Kal	Family planning	16	training	0	Department of Health		□
220302	Chong Kal	TBA training	4	training	0	Department of Health		□
220302	Chong Kal	Tuberculosis cases searching	4	training	0	Department of Health		□
220302	Chong	Scholarship for poor pupils	1	schools	0	Department of Education		□

District Data Book 2009: Development Plans and Projects

Commune GIS	Commune	Temporary Agreements				Supporter	Funding Source	Listed in CIP before DIW
		Project Name	Quantity	Unit	Est.Cost (K.Riels)			
	Kal					Youth and Sports		
220302	Chong Kal	Morning meals provision program	1	schools	0	Department of Education Youth and Sports		<input type="checkbox"/>
220302	Chong Kal	Teachers refresher training	1	schools	0	Department of Education Youth and Sports		<input type="checkbox"/>
220302	Chong Kal	Child friendly program strengthening	1	schools	0	Department of Education Youth and Sports		<input type="checkbox"/>
220302	Chong Kal	Health care and hygiene education	12	training	0	Cambodian Red Cross		<input type="checkbox"/>
NREM								
220302	Chong Kal	Environmental awareness and law education	3	training	1600	Department of Environment	PIF	✓
220302	Chong Kal	Two billboard installation	2	piece	320	Department of Environment		<input type="checkbox"/>
Administration and Security								
220302	Chong Kal	Labor law dissemination	1	training	400	Department of Labor and Vocational Training		<input type="checkbox"/>
Gender								
220302	Chong Kal	Law against domestic violence dissemination	0	training	0	Department of Women		✓
220302	Chong Kal	Annual provincial level workshop on WCFPs activities reflection	1	training	256	Department of Women		<input type="checkbox"/>
220302	Chong Kal	Pictorial maternity education training to CCWC	1	training	500	Department of Women		<input type="checkbox"/>
220302	Chong Kal	District level training on community kindergarten operation	1	time	307	Department of Women		<input type="checkbox"/>
220302	Chong Kal	CWCC meeting on gender mainstreaming in sector plans	1	time	256	Department of Women		<input type="checkbox"/>
220302	Chong Kal	District and commune woman focal point capacity strengthening	1	time	99	Department of Women		<input type="checkbox"/>
220302	Chong Kal	Domestic violence law and victim protection forum organizing	1	time	256	Department of Women		<input type="checkbox"/>
220302	Chong Kal	Dissemination of elimination of all forms of discrimination against women	1	time	256	Department of Women		<input type="checkbox"/>

Commune GIS	Commune	Temporary Agreements				Supporter	Funding Source	Listed in CIP before DIW
		Project Name	Quantity	Unit	Est.Cost (K.Riels)			
220302	Chong Kal	Female village leader, WCFPs and female councilors forum support	2	training	565	Department of Women		<input type="checkbox"/>

### 8.2.3 Temporary Agreements for 2009 as per DIW 2008 for Commune: Krasang

Commune GIS	Commune	Temporary Agreements				Supporter	Funding Source	Listed in CIP before DIW
		Project Name	Quantity	Unit	Est.Cost (K.Riels)			
Economic								
220303	Krasang	Village veterinary training	1	training	1400	Department of Agriculture Forestry and Fisheries		✓
220303	Krasang	Community first aid	12	Time	0	Cambodian Red Cross		☐
Social								
220303	Krasang	Morning meals provision program	1	schools	0	Department of Education Youth and Sports		☐
220303	Krasang	School support committee district level training	4	training	240	Department of Rural Development		☐
220303	Krasang	Household environmental improvement awareness education	12	training	0	Department of Health		☐
220303	Krasang	Sanitation day campaign organizing	0	training	0	Cambodian Red Cross		✓
220303	Krasang	Literacy class operation	1	schools	0	Department of Education Youth and Sports		☐
220303	Krasang	Building construction	1	schools	0	Department of Education Youth and Sports		☐
220303	Krasang	Teachers supply to every school	1	schools	0	Department of Education Youth and Sports		☐
220303	Krasang	PPEY budget support to school	1	schools	0	Department of Education Youth and Sports		☐
220303	Krasang	Teachers refresher training	1	schools	0	Department of Education Youth and Sports		☐
220303	Krasang	Health care and hygiene education	12	Tree	0	Cambodian Red Cross		☐
220303	Krasang	Scholarship for poor pupils	1	schools	0	Department of Education Youth and Sports		☐

District Data Book 2009: Development Plans and Projects

Commune GIS	Commune	Temporary Agreements				Supporter	Funding Source	Listed in CIP befor DIW
		Project Name	Quantity	Unit	Est.Cost (K.Riels)			
220303	Krasang	Mosquito nets distribution/treatment	5	mosqui-net	0	Department of Health		✓
220303	Krasang	TBA training	0	training	0	Department of Health		✓
220303	Krasang	Children and women vaccination	0	time	0	Department of Rural Development		✓
220303	Krasang	Sanitation day campaign organizing	0	training	0	Cambodian Red Cross		✓
220303	Krasang	TBA training	0	training	0	Ministry of Health		✓
220303	Krasang	Children and women vaccination	0	time	0	Cambodian Red Cross		✓
220303	Krasang	Child friendly program strengthening	1	schools	0	Department of Education Youth and Sports		□
220303	Krasang	Health and sanitation education	168	training	0	Department of Health		□
220303	Krasang	Latrine maintenance	12	Time	0	Cambodian Red Cross		□
220303	Krasang	Immunization of 7 type of vaccines	72	training	2160	Department of Health		□
220303	Krasang	Family planning	72	training	1440	Department of Health		□
220303	Krasang	Community campaign plan implementation	1	training	200	Department of Rural Development		□
220303	Krasang	Monitoring community participatory sanitation promotion	1	training	280	Department of Rural Development		□
220303	Krasang	Village sanitation campaign	1	training	280	Department of Rural Development		□
220303	Krasang	TBA training	6	training	1800	Department of Health		□
220303	Krasang	Tuberculosis cases searching	6	training	768	Department of Health		□
220303	Krasang	Mental health care education	60	training	2400	Department of Health		□
220303	Krasang	Wells maintenance	12	Time	0	Cambodian Red Cross		□
Administration and Security								
220303	Krasang	Mine field survey mission	1	Time	640	Land Used Planning Unit		□
220303	Krasang	Labor law dissemination	1	training	400	Department of Labor and Vocational Training		□
220303	Krasang	Commune meeting for mine field data gathering	1	Time	90	Land Used Planning Unit		□
220303	Krasang	Provincial workshop to approve demining plan	1	Time	1080	Land Used Planning Unit		□
220303	Krasang	District workshop for data gathering	1	Time	230	Land Used Planning Unit		□
220303	Krasang	Demining land acquisition follow up and	1	Time	640	Land Used Planning Unit		□

Commune GIS	Commune	Temporary Agreements				Supporter	Funding Source	Listed in CIP befor DIW
		Project Name	Quantity	Unit	Est.Cost (K.Riels)			
		supervision						
<b>Gender</b>								
220303	Krasang	Annual provincial level workshop on WCFPs activities reflection	1	training	256	Department of Women		<input type="checkbox"/>
220303	Krasang	Pictorial maternity education training to CCWC	1	time	500	Department of Women		<input type="checkbox"/>
220303	Krasang	Law against domestic violence dissemination	0	training	0	Department of Women		✓
220303	Krasang	District level training on community kindergarten operation	2	time	307	Department of Women		<input type="checkbox"/>
220303	Krasang	WCC meeting on gender mainstreaming in sectoral plan	1	time	256	Department of Women		<input type="checkbox"/>
220303	Krasang	District and commune woman focal point capacity strengthening	1	time	99	Department of Women		<input type="checkbox"/>
220303	Krasang	Domestic violence law and victim protection forum organizing	1	time	256	Department of Women		<input type="checkbox"/>
220303	Krasang	Female village leader, WCFPs and female councilors forum support	2	training	565	Department of Women		<input type="checkbox"/>

#### 8.2.4 Temporary Agreements for 2009 as per DIW 2008 for Commune: Pongro

Commune GIS	Commune	Temporary Agreements				Supporter	Funding Source	Listed in CIP befor DIW
		Project Name	Quantity	Unit	Est.Cost (K.Riels)			
Social								
220304	Pongro	Village sanitation campaign	1	training	960	Department of Rural Development		<input type="checkbox"/>
220304	Pongro	Prevented medicine provision	96	training	2480	Department of Health		<input type="checkbox"/>
220304	Pongro	Teachers supply for every village	1	schools	0	Department of Education Youth and Sports		<input type="checkbox"/>
220304	Pongro	Pump wells repairing technique training	6	well	0	Department of Rural Development		<input type="checkbox"/>
220304	Pongro	Health center committee strengthening	0	training	0	Ministry of Health		✓

District Data Book 2009: Development Plans and Projects

Commune GIS	Commune	Temporary Agreements				Supporter	Funding Source	Listed in CIP befor DIW
		Project Name	Quantity	Unit	Est.Cost (K.Riels)			
220304	Pongro	Community campaign plan implementation	1	training	592	Department of Rural Development		<input type="checkbox"/>
220304	Pongro	School support committee district level training	1	training	720	Department of Rural Development		<input type="checkbox"/>
220304	Pongro	Birth spacing	60	training	1200	Department of Health		<input type="checkbox"/>
220304	Pongro	Sanitation promotion worker training	1	training	1080	Department of Rural Development		<input type="checkbox"/>
220304	Pongro	Water quality control	6	well	0	Department of Rural Development		<input type="checkbox"/>
220304	Pongro	Child gathering for vaccinating	1	Time	0	Cambodian Red Cross		<input type="checkbox"/>
220304	Pongro	Latrine and wells maintenance	1	Time	0	Cambodian Red Cross		<input type="checkbox"/>
220304	Pongro	Emergency relief	1	Time	0	Cambodian Red Cross		<input type="checkbox"/>
220304	Pongro	Public health and sanitation education	1	training	0	Cambodian Red Cross		<input type="checkbox"/>
220304	Pongro	Environmental and sanitation awareness education	12	training	0	Department of Health		<input type="checkbox"/>
220304	Pongro	Health center committee strengthening	0	training	0	Department of Health		✓
220304	Pongro	Health education reviewing	1	training	840	Department of Rural Development		<input type="checkbox"/>
220304	Pongro	Scholarship for poor pupils	1	schools	0	Department of Education Youth and Sports		<input type="checkbox"/>
220304	Pongro	PPEY budget support to school	1	schools	0	Department of Education Youth and Sports		<input type="checkbox"/>
220304	Pongro	Child friendly program strengthening	1	schools	0	Department of Education Youth and Sports		<input type="checkbox"/>
220304	Pongro	Pump wells repair	6	well	420	Department of Rural Development		<input type="checkbox"/>
220304	Pongro	Morning meals provision program	1	schools	0	Department of Education Youth and Sports		<input type="checkbox"/>
220304	Pongro	Tuberculosis cases searching	60	training	2400	Department of Health		<input type="checkbox"/>
220304	Pongro	Health care and hygiene education	60	training	0	Department of Health		<input type="checkbox"/>
220304	Pongro	Mental health care education	6	training	768	Department of Health		<input type="checkbox"/>
220304	Pongro	Teachers refresher training	1	schools	0	Department of Education Youth and Sports		<input type="checkbox"/>
220304	Pongro	Health center committee strengthening	12	training	0	Department of Health		<input type="checkbox"/>

District Data Book 2009: Development Plans and Projects

Commune GIS	Commune	Temporary Agreements				Supporter	Funding Source	Listed in CIP befor DIW
		Project Name	Quantity	Unit	Est.Cost (K.Riels)			
		meeting						
<b>NREM</b>								
220304	Pongro	Sanitation awareness poster installation	0	training	0	Malteser Germany		✓
220304	Pongro	Sanitation awareness poster installation	0	training	0	Cambodia Health and Human Rights Alliance		✓
<b>Administration and Security</b>								
220304	Pongro	Commune meeting for mine field data gathering	1	Time	90	Land Used Planning Unit		<input type="checkbox"/>
220304	Pongro	Provincial workshop to approve demining plan	1	Time	1080	Land Used Planning Unit		<input type="checkbox"/>
220304	Pongro	District workshop for data gathering	1	Time	320	Land Used Planning Unit		<input type="checkbox"/>
220304	Pongro	Mine field survey mission	1	Time	640	Land Used Planning Unit		<input type="checkbox"/>
220304	Pongro	Labor law dissemination	1	training	400	Department of Labor and Vocational Training		<input type="checkbox"/>
220304	Pongro	Demining land acquisition follow up and supervision	1	Time	6409	Land Used Planning Unit		<input type="checkbox"/>
<b>Gender</b>								
220304	Pongro	Annual provincial level workshop on WCFPs activities reflection	1	training	254	Department of Women		<input type="checkbox"/>
220304	Pongro	Female village leader, WCFPs and female councilors forum support	2	training	565	Department of Women		<input type="checkbox"/>
220304	Pongro	Domestic violence law and victim protection forum organizing	1	training	256	Department of Women		<input type="checkbox"/>
220304	Pongro	District and commune woman focal point capacity strengthening	1	time	99	Department of Women		<input type="checkbox"/>
220304	Pongro	Law against domestic violence dissemination	0	training	0	Department of Women		✓
220304	Pongro	CWCC meeting on gender mainstreaming in sector plans	1	time	254	Department of Women		<input type="checkbox"/>
220304	Pongro	District level training on community kindergarten operation	1	time	176	Department of Women		<input type="checkbox"/>
220304	Pongro	Pictorial maternity education training to CCWC	1	time	500	Department of Women		<input type="checkbox"/>

**Source:** CDPD, District Level Detail TA resulting from DIW



**8.3 Outputs, estimated and actual costs of C/S Fund Projects between 2005 and 2008, by Commune**

Commune	Project Type	Budget Year	Output		Quantity	Unit	Unit Cost MR	
			Description	Type			Estimate	Actual
Cheung Tien	Rural Transport	2005	Earth road	New	1.86	Km	25.02	19.26
Cheung Tien	Rural Transport	2006	Double pipe culvert	New	2	Place	6.13	30.15
Cheung Tien	Rural Transport	2006	Laterite road	New	2.34	Km	24.23	30.15
Cheung Tien	Rural Transport	2007	Laterite road	New	1.306	Km	22.17	26.86
Cheung Tien	Rural Transport	2007	Double pipe culvert	New	1	Place	4.69	26.86
Cheung Tien	Rural Transport	2008	Double pipe culvert	New	1	Place	6.61	52.90
Cheung Tien	Rural Transport	2008	Laterite road	New	1.376	Km	46.39	52.90
Chong Kal	Rural Transport	2005	Single pipe culvert	New	5	Place	8.17	25.34
Chong Kal	Rural Transport	2005	Double pipe culvert	New	1	Place	5.42	25.34
Chong Kal	Rural Transport	2005	Laterite road	New	2.07	Km	17.38	25.34
Chong Kal	Rural Transport	2006	Laterite road	New	2.492	Km	26.34	37.88
Chong Kal	Rural Transport	2006	Double cell box culvert	New	1	Place	11.52	37.88
Chong Kal	Rural Transport	2007	Laterite road	New	1.235	Km	22.47	34.70
Chong Kal	Rural Transport	2007	Double cell box culvert	New	1	Place	12.31	34.70
Chong Kal	Irrigation	2008	Single cell box culvert with gate	Repair	2	Place	33.95	33.85
Krasang	Rural Transport	2005	Box culvert (general)	New	1	Place	7.11	23.29
Krasang	Rural Transport	2005	Earth road	New	1.02	Km	21.41	23.29
Krasang	Rural Transport	2006	Double pipe culvert	New	1	Place	3.04	35.04
Krasang	Rural Transport	2006	Single pipe culvert	New	3	Place	5.21	35.04
Krasang	Rural Transport	2006	Laterite road	New	3.185	Km	26.77	35.04
Krasang	Rural Transport	2007	Single pipe culvert	Repair	1	Place	1.09	26.81
Krasang	Rural Transport	2007	Single pipe culvert	New	1	Place	2.12	26.81
Krasang	Rural Transport	2007	Laterite road	New	0.997	Km	23.60	26.81
Krasang	Rural Transport	2008	Laterite road	New	0.552	Km	26.76	26.70
Krasang	Rural Transport	2008	Earth road	New	0.848	Km	25.40	28.27
Krasang	Rural Transport	2008	Single pipe culvert	New	1	Place	2.87	28.27
Pongro	Rural Transport	2005	Earth road	New	1.77	Km	26.73	19.05
Pongro	Rural Transport	2006	Earth road	New	2.55	Km	33.56	33.45
Pongro	Rural Transport	2007	Laterite road	New	2.085	Km	25.17	26.92
Pongro	Rural Transport	2007	Single pipe culvert	New	1	Place	1.94	26.92
Pongro	Rural Transport	2008	Earth road	New	1.025	Km	32.35	32.30

*Source: PID*

**8.4 Total Expenditure on C/S Fund Projects by sector and commune between 2005 and 2008**

Sector	Total Cost in Million Riels			
	Cheung Tien	Chong Kal	Krasang	Pongro
Irrigation		33.85		
Rural Transport	102.31	97.92	113.30	111.72

*Source: PID***8.5 Actual 2009 C/S Fund projects by Commune**

Commune	Project Type	Project Output		Quantity	Unit	Fund Source (Riels)		
		Description	Type			Total	C/S	Local Contribution
Cheung Tien	Rural Transport	Earth road	New	0.4	km	30,170,791	29,870,791	300,000
Cheung Tien	Rural Transport	Earth road	New	0.311	km	30,170,791	29,870,791	300,000
Chong Kal	Rural Transport	Laterite road	Upgrade	0.525	km	41,849,076	41,599,076	250,000
Chong Kal	Rural Transport	Laterite road	Upgrade	0.5	km	41,849,076	41,599,076	250,000
Krasang	Rural Transport	Laterite road	Upgrade	0.29	km	23,491,493	23,391,493	100,000
Krasang	Rural Transport	Double pipe culvert 1.0m diameter	New	1	Place	23,491,493	23,391,493	100,000
Pongro	Rural Transport	Earth road	New	0.35	km	37,835,028	37,635,028	200,000
Pongro	Rural Transport	Single pipe culvert 0.6m diameter	New	3	Place	37,835,028	37,635,028	200,000

*Source: PID*

## 9 District level Projects from 2006 to 2009

District Initiative Projects (DIPs) are funded by Danida, DFID and PSDD (UNDP, DFID and SIDA).

### **Funding for 2006-2008**

Between 2006 and 2008 there were 14 provinces funded by PSDD and 10 by Danida and DFID. The list of provinces and who funded these is below

*Danida and DFID funded DIPs:*

Kampong Cham	Kampong Speu	Koh Kong	Kratie	Monduliri
Pursat	Ratanakiri	Siem Reap	Sihanoukville	Kep

*PSDD funded DIPs:*

Banteay Meanchey	Battambang	Kampong Chhnang	Kandal	Phnom Penh
Prey Veng	Svay Rieng	Takeo	Kampong Thom	Preah Vihear
Stung Treng	Kampot	Oddar Meanchey	Pailin	

### **Funding for 2009**

In 2009 there was a change to the number of provinces funded by the two streams. Danida and DFID were still funding the same 10 provinces they had been funding the previous three years, but two more provinces were added *Kampong Thom and Kampot*. Now PSDD funds 12 provinces and Danida and DFID fund 12.

## 9.1 District Initiative Infrastructure Projects from 2006 to 2009

### 9.1.1 District Initiative Infrastructure Projects for 2006 to 2008

Date	Project Name	Implementing Agencies	Budget (US\$)	Project Output & Capacity	Number of Beneficiaries
2007	Construct laterite road	Inter-commune	7,780.00		
2008	Laterite Road construction	Inter-commune	8,000.00	896m	2communes,9,736persons

### 9.1.2 District Initiative Infrastructure Projects in 2009

*No District Initiative Infrastructure Projects have been implemented in this district for 2009*

## 9.2 District Initiative Service Projects from 2006 to 2009

### 9.2.1 District Initiative Service Projects for 2006 to 2008

Date	Project Names	Implementing agencies	Budget (US\$)	Project Output & Capacity	Number of Beneficiaries
2007	Training on compost making technique	District Agri	705.00		
2007	Training on land law	District Land	380.00		
2007	Dissemination on domestic violence and gender concept	District WA	420.00		
2007	Dissemination NRE protection law	Provincial Environment	300.00		
2007	Strengthen village children network	District SA	392.50		
2007	Education on Buddhism and Khmer culture and tradition	District Religion	240.00		
2007	Organize International Women's Day	District WA	100.00		
2007	Organize International Children's Day	District Education	100.00		
2007	Organize Hygiene's Day	HC	640.00		
2008	Dissemination on law against domestic violence	District WA	513.12	12courses	4communes,360persons
2008	Training on gender concept	District WA	108.76	1course	4communes,30persons
2008	Dissemination on land law	District land	462.08	8courses	4communes,240persons
2008	Produce sign board to conserve ancient temples	District culture office	935.42	2sing boards	2communes,2773persons
2008	Training on compost making	District agriculture office	492.08	8courses	4communes,280persons
2008	Literacy classes	District Education	738.54	2courses	2communes,50persons

### 9.2.2 District Initiative Service Projects in 2009

Project Name	Sector	Implementing Agency	Budget	Project outputs/ capacities	No. of Beneficiaries		Progress	Remarks on Issues of Progress
					Total	Female		
Literacy class	EDU	Education Office	\$850.00	2courses	50	35	100%	
Produce land use map	LUM	PDLMUCC	\$1,500.00	10maps	1,500	800	60%	
Dissemination of health care for women and baby	HEA	Health Center	\$700.00	8courses	240	190	100%	
Dissemination of land law	LUM	LMUCC Office	\$750.00	10courses	386	178	100%	
Diversity rice production	AGR	Agriculture Office	\$850.00	3courses	60	45	100%	
Training on vegetable crops technique	AGR	Agriculture Office	\$200.00	2courses	50	37	100%	
Dissemination of temple conservation law	CUL	Culture Office	\$450.00	7courses	258	187	100%	
Traffic law and public order dissemination	ADM	Police Inspection	\$450.00	7courses	257	118	100%	
Dissemination of children right	SOC	Social Affairs Office	\$400.00	6courses	215	135	100%	
Dissemination of gender concept	GEN	WA Office	\$600.00	11courses	404	321	100%	

### **9.3 Inter Commune Council Projects in 2008 and 2009**

#### **9.3.1 ICC Projects in 2008**

*No ICC projects in this district at this time*

#### **9.3.2 ICC Projects in 2009**

*No ICC projects in this district at this time*

**Source:** ICC project, Ministry of Interior (DoLA), -UNDP project for Local Governance – DDLG

### **9.4 Other Projects in 2008 and 2009**

#### **9.4.1 RPRP**

*There are no RPRP projects being implemented in this district or province at this time. The RPRP is only being implemented in Svay Rieng and Prey Veng*

##### **9.4.1.1 RPRP Projects from 2006 to 2008**

*No RPRP projects in this district at this time*

##### **9.4.1.2 RPRP Projects in 2009**

*No RPRP projects in this district at this time*

## 9.4.2 Seth Korma

### 9.4.2.1 Seth Koma 2007

Description of Outputs/Activities	Budget (1 US\$ = 4000 Riels)
1.1 Monthly CCWC meeting	\$1,008
1.2 Quarterly CCWC meeting	\$658
1.3 Operation support cost	\$3,600
1.4 Village meeting on Child Rights and child protection	\$693
1.5 Village meeting on Immunization, health issues	\$693
1.6 village meeting on Education	\$693
1.7 Incentive CPS teachers for 10 months	\$10,050
1.8 Monitoring the functioning of CPS classes	\$536
1.9 Awareness raising on women and child rights	\$4,800
<b>GRAND TOTAL</b>	<b>\$22,731</b>

*Source: UNICEF*

### 9.4.2.2 Seth Koma 2008

Description of Outputs/Activities	Budget (1 US\$ = 4000 Riels)
Community able to identify and articulate critical development needs for children.	
CCWC monthly meetings (24 Communes)	\$1,008
CCWC quarterly meetings (24 Communes)	\$462
Operational support (24 Communes)	\$3,600
Village meeting on child rights and child protection (24 Communes)	\$693
Village meeting on health issues (24 Communes)	\$693
Village meeting on education (24 Communes)	\$693
Incentive for CPS teachers (22 Communes)	\$10,050
Monitoring the functioning of CPS classes (22 Communes)	\$536
Campaign on woman and child right (24 Communes)	\$4,800
<b>Sub-total for all outputs</b>	<b>\$22,535</b>
<b>Contingency cost</b>	<b>\$196</b>
<b>GRAND TOTAL</b>	<b>\$22,731</b>

*Source: UNICEF*

**9.4.2.3 Seth Koma 2009**

Description			Anlong Veaeng	Banteay Ampil	Chong Kal	Trapeang Prasat	Samraong	Total
# Comm.			5	4	4	6	5	24
# Village			47	74	25	38	47	231
Activity and budget	Ope. costs CCWC	Comm.	5	4	4	6	5	24
		Budget	\$1,000	\$800	\$800	\$1,200	\$1,000	\$4,800
	CPS	Village	27	10	25	28	13	103
		Budget	\$3,645	\$1,314	\$3,375	\$3,780	\$1,755	\$13,869
	Parenting Education	Village	47	10	25	38	17	137
		Budget	\$2,961	\$630	\$1,806	\$2,934	\$1,071	\$9,402
	CLTS	Village	0	27	0	0	13	40
		Budget	\$0	\$7,365	\$0	\$0	\$3,079	\$10,444
	PHAST	Village	0	15	4	0	0	19
		Budget	\$0	\$3,095	\$731	\$0	\$0	\$3,826
	Special health intervention	Support MMR	5	4	4	6	5	24
		Budget	\$1,000	\$800	\$800	\$1,200	\$1,000	\$4,800
	Outreach	Comm	1	1	0	1	0	3
		Budget	\$504	\$1,512	\$0	\$756	\$0	\$2,772
	Discretionary Fund	Comm.	1	1	0	1	0	3
		Budget	\$500	\$500	\$0	\$500	\$0	\$1,500
Village Mapping			\$66	\$162	\$0	\$81	\$0	\$309
Total			\$9,676	\$16,178	\$7,512	\$10,451	\$7,905	\$51,722

**Source:** UNICEF





## **SECTION D: SERVICES AND ORGANIZATIONS**



## 10 Infrastructure

### 10.1 Length of and Expenditure on Roads in 2008, by District

Roads	OMC	Anlong Veng	Banteay Ampil	Chongkal	Samrong	Trapeang Prssath
Length of paved road in the district	108	40	0	0	30	38
Length of unpaved roads in the district	259	18	12	39	190	0
Amount spent on construction of roads in 2008	555,074	37,043	34,838	41,613	400,276	41,305
Amount spent on repair and rehabilitation of roads in 2008	1,172,373	36,089	26,172	92,693	1,017,419	0

**Note 1:** Please note that these data are not necessarily complete or correct. The data are derived from government agencies at provincial and district level which used different recording systems, did not always have complete data or were, sometimes, less than willing to share their data.

**Note 2:** Please be aware that these data are incomplete due to the fact that the amounts for the construction, repair and rehabilitation recorded reflect only funds provided by the government, not the contributions by any other parties.

### 10.2 Scale of and Expenditure on Irrigation in 2008, by District

Irrigation	OMC	Anlong Veng	Banteay Ampil	Chongkal	Samrong	Trapeang Prssath
Number of irrigation schemes operating in 2008	9	3	2	2	2	n/a
Total nr of hectares under irrigation in dry season 2008	450	140	100	110	100	n/a
Total funds spent in 2008 on construction of irrigation systems	626,708	278,695	198,881	73,660	75,471	n/a
Total funds spent in 2008 on rehabilitation/repair of irrigation systems	18,530	9,400	3,500	2,530	3,100	n/a
Total funds spent in 2008 on operation and maintenance	645,238	288,095	202,381	76,190	78,571	n/a

**Note 1:** Please note that these data are not necessarily complete or correct. The data are derived from government agencies at provincial and district level which used different recording systems, did not always have complete data or were, sometimes, less than willing to share their data.

**Note 2:** Please be aware that the data above are incomplete as these only reflect funds provided by the government, not the contributions by farmers or other parties.

**10.3 Power Supply in 2008, by District**

Electricity	OMC	Anlong Veng	Banteay Ampil	Chongkal	Samrong	Trapeang Prssath
Total number of electricity connections to households	3,503	950	n/a	305	2,043	205
Total number of electricity connections to agencies, companies, organizations	86	10	n/a	7	66	3
Total volume in KWh of electricity consumed last in 2008	9,901,263	90,455	n/a	16,115	9,785,880	8,813
Total amount collected from users for consumed electricity	2,941,229	43,074	n/a	7,674	2,886,285	4,197
Per capita electricity consumption in 2008 in Kwh	256	3	n/a	1	167	0

**Note 1:** Please note that these data are not necessarily complete or correct. The data are derived from government agencies at provincial and district level which used different recording systems, did not always have complete data or were, sometimes, less than willing to share their data.

**Note 2:** These data only record electricity provided by electricity companies and does not include homes powered by generators or batteries (for this information see Section B: General Profile, Part 1: General Information; table 1.3.1 and chart 1.3.4).

**Note 3:** In most provinces electricity is only provided through town-based networks

**Note 4:** Per capita consumption is calculated by dividing the total volume of electricity produced in 2008 by the number of people living in each district as per the 2008 census (for the provincial data it is calculated against the number of people living in the province)

## 11 Health Facilities

*Please note that the Operational District (health) boundaries are different to the administrative district boundaries. Therefore the data provided here shows the facilities, staff, NGOs etc in each Operational District within the province NOT the administrative district.*

### Acronyms

<b>Com Cov</b>	Commune Covered	<b>MW2</b>	Secondary Midwives
<b>CPA</b>	Complementary Package of Activities	<b>NU1</b>	Primary Nurse
<b>Dr</b>	Doctor	<b>NU2</b>	Secondary Nurse
<b>FDH</b>	Former District Hospital	<b>OD</b>	Operational District
<b>HC</b>	Health Center	<b>Others</b>	Other Staff
<b>HC (NB)</b>	Health Center no building	<b>PHD</b>	Provincial Health Department
<b>HP</b>	Health Post	<b>Pop 04-05</b>	Population Covered 2004 or 2005
<b>MA</b>	Medical Assistant	<b>RH</b>	Referral Hospital
<b>MPA</b>	Minimum Package of Activities	<b>Vil Cov</b>	Village Covered
<b>MW1</b>	Primary Midwives	<b>VIL-HC</b>	Distance from Village to Health Center

### 11.1 Health Facilities in the Province, by Operational District

Otdar Mean Chey	OD	RH	HC	HP
Samraong	1	1	14	
<b>Total</b>	<b>1</b>	<b>1</b>	<b>14</b>	<b>0</b>

### 11.2 Health Facilities and Staff in the province, by Operational District

This table shows health facilities, staff and coverage of health facilities in each operational district.

No	Facility Name	Type	Class	Dr	Ma	Nu2	Nu1	Mw2	Mw1	Others	Com Cov	Vil Cov	Pop. 04-05
<b>Samraong</b>													
1	Ampil	FDH	MPA	0	0	5	7	0	2	2	1	23	10,203
2	Anlong Veaeng	FDH	MPA	2	1	15	20	1	1	5	4	36	19,883
3	Beng	HC	None MPA	0	0	1	10	0	0	3	1	16	8,657
4	Bos Sbov	HC	MPA	0	0	1	1	1	0	2	1	7	3,098
5	Chong Kal	FDH	MPA	0	0	4	5	0	3	3	2	14	11,068
6	Kaun Kriel	HC	MPA	0	0	1	2	0	0	3	4	23	12,379
7	Kouk Khpos	HC	MPA	0	0	1	10	0	0	3	3	19	7,599
8	Kouk Mon	HC	MPA	0	0	1	2	2	1	4	3	12	7,660
9	Ou Smach	HC	MPA	0	1	1	2	0	0	2	2	9	6,735
10	Pongro Ta Paen	HC	None MPA	0	0	4	5	0	3	3	2	10	7,141
11	Samraong	HC	MPA	0	0	1	1	0	1	3	3	20	19,310
12	Trapeang Prasat	HC	MPA	0	0	3	5	0	1	1	2	14	8,223
13	Trapeang Prei	HC	MPA	0	0	3	2	0	1	3	2	16	6,599
<b>Total:</b>				<b>2</b>	<b>2</b>	<b>41</b>	<b>72</b>	<b>4</b>	<b>13</b>	<b>37</b>	<b>30</b>	<b>219</b>	<b>128,555</b>

Source: MEDiCAM – Infrastructure - ([http://www.medicam-cambodia.org/hsi/health\\_system/srch/index.asp?cboLcn=6&cmdSearch=Search&cboCHName=&cboType=](http://www.medicam-cambodia.org/hsi/health_system/srch/index.asp?cboLcn=6&cmdSearch=Search&cboCHName=&cboType=))

### 11.3 Deliveries in 2007 in the Province, by Operational District

OD	Deliveries	Deliveries at home		Deliveries	Total deliveries	Total deliveries
	at HC	By Health Staff	ByTBAs	at RH	by Health Staff	by health staff and TBAs
Samraong	1330	310	1310	209	1849	3159
<i>Sub-total</i>	<i>1330</i>	<i>310</i>	<i>1310</i>	<i>209</i>	<i>1849</i>	<i>3159</i>

Source: MoH, Annual Statistics 2007

## 12 Education<sup>3</sup>

### 12.1 Schools, Classes, Students, Staff, for for all levels, for 2007/2008 by District

District	Number of Schools	Disadv. Schools	Number of Classes	Classes in Pagoda	Enrollment		Repeaters		Teaching Staff		Non-Teaching Staff		Total Staff	
					Total	Girl	Total	Girl	Total	Female	Total	Female	Total	Female
Anlung Veng	30	1	240	0	9,036	4,165	947	419	151	35	25	5	176	40
Banteay Ampil	59	6	345	0	11,417	5,216	1,596	731	229	24	40	1	269	25
Chong Kal	31	1	174	0	6,019	2,956	706	298	124	31	26	5	150	36
Samrong	42	0	314	0	12,155	5,725	1,269	527	229	80	39	7	268	87
Trapaing Prasat	27	4	197	0	6,522	2,966	788	347	127	31	27	2	154	33
<b>Whole Province</b>	189	12	1,270	0	45,149	21,028	5,306	2,322	860	201	157	20	1,017	221
- Urban Area	42	0	314	0	12,155	5,725	1,269	527	229	80	39	7	268	87
- Rural Area	117	11	716	0	23,958	11,138	3,090	1,376	480	86	93	8	573	94
- Remote Area	30	1	240	0	9,036	4,165	947	419	151	35	25	5	176	40

### 12.2 Characteristics of Schools and School Principals for 2007/2008 by Commune

Commune	Number of Schools				2 - Shift	Floating	Schools	Attached	Schools Without		Characteristics of School Principals (Incharge)			
	Pre-Sch	Primary	College	Lycee	Schools	Schools	in Pagoda	Pre-Sch	Water Sup.	Latrine	Avg. Age	Avg. Service	U.Sec+ Ed.	Female
Cheung Tien	1	5	1	0	5	0	0	1	1	1	39.9	16.9	2	0
Chong Kal	2	6	1	0	6	0	0	2	5	4	43.1	14.1	2	0
Krasang	0	5	1	0	6	0	0	0	3	3	36.7	7.5	2	0
Pongro	2	6	1	0	5	0	0	2	4	6	34.8	11.6	1	0

### 12.3 Enrolment by Level of Education, 2006/2007 by Commune

Commune	School	Pre school		Primary School		Lower Secondary School		Upper Secondary School		Enrolment	
		Total	Female	Total	Female	Total	Female	Total	Female	Total	Female
Cheung Tien	7	37	15	1070	498	79	30	0	0	1186	543
Chong Kal	9	65	36	1981	936	496	230	0	0	2542	1202
Krasang	6	0	0	1430	691	137	76	0	0	1567	767
Pongro	9	55	29	1096	538	54	27	0	0	1205	594

<sup>3</sup> All the data for section 12 comes from the Ministry of Education, Youth and Sport (MoEYS)

**12.4 Enrolment by Level of Education, 2007/2008 by Commune**

Commune	School	Pre school		Primary School		Lower Secondary School		Upper Secondary School		Enrolment	
		Total	Female	Total	Female	Total	Female	Total	Female	Total	Female
Cheung Tien	7	20	10	955	475	158	70	0	0	1133	555
Chong Kal	9	53	23	1814	915	522	254	0	0	2389	1192
Krasang	6	0	0	1177	545	145	89	0	0	1322	634
Pongro	9	50	28	1043	509	82	38	0	0	1175	575

**12.5 Aspects of Enrolment for 2007/2008 by Commune**

Commune	% Repeaters (Total)			% Over-age Enrollment (Total)			% Repeaters (Girl)			% Over-age Enrollment (Girl)		
	Primary	L.Sec.	U.Sec.	Primary	L.Sec.	U.Sec.	Primary	L.Sec.	U.Sec.	Primary	L.Sec.	U.Sec.
Cheung Tien	14.0	0.0	0.0	26.3	42.4	0.0	11.2	0.0	0.0	23.8	44.3	0.0
Chong Kal	12.9	6.1	0.0	29.7	62.3	0.0	12.3	3.5	0.0	28.5	61.0	0.0
Krasang	16.2	1.4	0.0	28.2	82.8	0.0	14.5	0.0	0.0	29.9	82.0	0.0
Pongro	10.8	0.0	0.0	23.9	48.8	0.0	8.6	0.0	0.0	23.6	39.5	0.0

**12.6 School Buildings for all schools in the District for 2007/2008, by Commune**

Commune	Total Number of		Concrete/Brick Structure		Wooden Structure		Bamboo Structure		New Buildings		Buildings Without Good		
	Buildings	Rooms	Buildings	Rooms	Buildings	Rooms	Buildings	Rooms	Repaired	Constructed	Floor	Roof	Wall
Cheung Tien	8	34	8	34	0	0	0	0	0	1	3	2	2
Chong Kal	17	55	11	44	4	8	2	3	1	1	6	3	7
Krasang	9	35	5	25	3	9	1	1	2	1	3	2	5
Pongro	11	32	7	23	4	9	0	0	1	4	6	1	3

**12.7 Conditions of Classrooms and Existence of Separate School Office and Library, by Commune**

Commune	Number of Class rooms	Number of Classrooms			Classrooms Without Good			Number of Furniture needed				Schools with Separate	
		in Pagoda	New Repaired	New Constr.	Floor	Roof	Wall	Desks	Chairs	Black-board	Teacher Table	Office	Library
Cheung Tien	28	0	0	5	11	5	7	0	0	0	3	2	1
Chong Kal	40	0	2	5	18	12	16	16	66	7	21	1	1
Krasang	26	0	3	6	11	1	11	40	32	6	5	3	0
Pongro	23	0	3	13	13	2	7	86	90	5	14	3	1



**12.8 Community Participation and Financing across all schools in the District for 2007/2008 by Commune**

Commune	Parent Association				Comm. Teachers	Teaching Monks	PAP Fund (Riel)		Number of Schools Obtaining Funds from				
	Exists	Held Meet	Total	Female			per Student	per School	Sch. Income	Community	Gvt. For building	Abroad	IOs/NGOs
Cheung Tien	6	6	7	1	0	0	7,517	1,233,829	0	0	0	0	0
Chong Kal	7	7	5	1	0	0	10,743	4,171,753	0	1	0	1	0
Krasang	6	6	6	0	0	0	7,932	2,071,633	0	1	0	1	1
Pongro	8	8	5	1	0	0	7,700	1,226,867	0	1	0	1	3

**12.9 Percentage Student Flow Rates and Graduation by level 2006/2007, by Commune**

Commune	Primary Level (Grades 1-6)			Lower Secondary Level (Grades 7-9)			Upper Secondary Level (Grades 10-12)			Successful Candidates		
	Promotion	Repetition	Dropout	Promotion	Repetition	Dropout	Promotion	Repetition	Dropout	Grade 6	Grade 9	Grade 12
Cheung Tien	70.4	12.5	17.1	84.8	0.0	15.2	0.0	0.0	0.0	86	0	0
Chong Kal	75.4	11.8	12.8	75.8	6.5	17.7	0.0	0.0	0.0	188	83	0
Krasang	64.9	13.4	21.7	53.3	1.5	45.3	0.0	0.0	0.0	102	0	0
Pongro	73.8	10.3	15.9	70.4	0.0	29.6	0.0	0.0	0.0	52	0	0

## 13 Staff and Resources at the District

*This chapter presents data from the District Information System, collected around the middle of 2009 unless otherwise specified.*

### 13.1 District Councilors elected in 2009

Name	Sex	Year of Birth	Function	Phone
សុខ សុផាត	M	1957	Chairperson of The Council	012-971 649
នួន សង្ឃ	M	1958	Councillor	012-376 828
ហូ ហៀប	M	1948	Councillor	092-741 436
តាន់ សារួម	M	1950	Councillor	012-376 834
ជុំ សុហាំង	F	1953	Councillor	012-186 6074
ភ្លិន សុភាន់	F	1973	Councillor	097-668 3347
ភួង កួយ	F	1953	Councillor	012-412 763
វ៉ាន សាវិន	M	1958	Councillor	012-974 114
ភ្នាន់ ភី	M	1960	Councillor	012-209 758
ហេង ចាន់ណា	M	1970	Councillor	
ធីង សំបាន	M	1959	Councillor	092-931 352

### 13.2 Committees of the Council

*Please note at the time of producing the district data books the composition of the committees was not known for all district councils and therefore data were not available for 13.2.1, 13.2.2, 13.2.3.*

#### 13.2.1 Technical Facilitation Committee

#### 13.2.2 Women's and Children's Affairs Committee

#### 13.2.3 Procurement Committee

### 13.3 Board of Governors

Name	Sex	DoB	Function	Salary Level	Body	Phone
ប៊ូ សាខន	M	1958	District Governor	ក.២.៦	High Ranking Civil Servant	012-757 075
ថន កុត	M	1967	District Deputy Governor	ខ.២.៨	Medium Civil Servant	012-500 651
មុំ ពុទ្ធិតា	F	1973	District Deputy Governor	គ.៣.៨	Secretary	012-359 695

### 13.4 Offices under Sala Krong, Sala Srok and Sala Khan

Office Name	Chief		Deputy Chief		No. of Staff				Office Area (m2)	No of vehicle (public or program)	
					State		Contract			vehicle	moto
	M	F	M	F	M	F	M	F			
Adminnistration Office	1	0	1	0	1	1	1	1	16	0	0
Economy Office	1	0	0	0	2	1	2	1	16	0	1
Social Affair Office	1	0	0	0	2	1	2	1	16	0	0

### 13.5 Municipality/District/Khan line offices

Office Name	Chief		Deputy Chief		No. of Staff				Office Area (m2)	No of vehicle (public or program)	
					State		Contract				
	M	F	M	F	M	F	M	F		vehicle	moto
District/ Khan Police Headquarter	1	0	4	0	62	0	0	0	93.63	0	7
District/ Khan Military Police Headquarter	1	0	2	0	6	0	0	0	Borrow	0	0
Planning Office	1	0	0	0	0	0	0	0	Borrow	0	0
Rural Development Office	1	0	1	0	0	0	0	0	Borrow	0	1
Women Affairs Office	0	0	0	0	0	0	0	1	Borrow	0	1
Education Office	0	0	0	0	0	0	0	1	Borrow	0	1
Agriculture Office	1	0	0	0	0	0	0	0	30	0	1
Social Affairs Office	1	0	1	0	0	0	0	0	Borrow	0	1
Culture Office	0	0	1	0	0	0	0	0	Borrow	0	0
Cult and Religion Office	1	0	0	0	0	0	0	0	Borrow	0	0
Information Office	0	0	0	0	0	1	0	0	Borrow	0	0
Lan Management Office	1	0	0	0	0	0	0	0	72	0	0

### 13.6 Properties and Equipment of District Administration

#### 13.6.1 Buildings

Description	Unit	Number	Remark
Office building type			
- Concrete	building	2	
- Wood	building	1	
- Mixed	building	0	
Total floor space	m2		
- Concrete	m2	442	
- Wood	m2	32	
- Mixed	m2	0	
Building condition			
- Concrete	%	100	
- Wood	%	60	
- Mixed	%	0	
Office reserved land area	m2	0	
Total office land area	m2	8,100	

#### 13.6.2 Means of Transport available at the District Administration

Description	Unit	Number	Remark
Vehicle (type, size and condition)	Vehicle	0	
Motorcycle (type, size and condition)	Motor	2	

**13.6.3 Equipment in District Offices**

Description	Unit	Number	Remark
Generator	per set	1	
Photocopy machine at the office	per set	0	
Private photocopy machine at the district town	place	2	
Telephone network (mobile line service)	network	4	
Telephone network (land line service)	network	0	
Fax (include Fax number)	per set	0	
Computer	per set	0	
Printer	per set	0	
Scanner	Per set	0	
Number of computers those can access Internet and email services in the municipality/ district/khan office (including the technical line offices (please provide the email address)	set	0	
Typewriters (including the technical line offices)	per set	0	
Staff of Municipality/district/khan office can use computer	person	2	

**13.6.4 Equipment and facilities at the District Town**

Description	Unit	Number	Remark
Availability of electricity at noon	Nr Hours	3	
Private internet and email services in the municipality/ district/khan town.	place	0	

**13.7 Registered Revenue of the District Administration in 2008<sup>4</sup>****13.8 Services in the District****13.8.1 Public Sector Services**

Type of Infrastructure/services	Unit	Number	
		Public	Private
Schools			
Pre-school	room	5	0
Primary School	room	87	0
Secondary school	room	29	0
High School	room		
University	room		
Health			
Health post	place		
Health center	place	2	0
Referral Hospital	bed		

<sup>4</sup> Please note that the data in this table are at best estimates. If the table appears blank it does not mean there is no revenue, just that the data have not been recorded/entered.

### 13.9 Civil Society Organizations active in the District

#### 13.9.1 NGOs, Associations, Programs and Projects

Name	Abbr.	Sector Activities	No. of Target Communes	No. of Target Villages	Office in District
RCDO	RCDO	កសិកម្ម - សុខភាព	4	8	No
Cambodia Red Cross	CRC	សង្គមកិច្ច - គ្រោះមហន្តរាយ	4	25	Yes
NA	BFD	ដោះស្រាយជំនឿ	4	25	No
CHRA	CHRA	សុខភាព	4	4	No
UNICEF	UNICEF	កម្មវិធីសិទ្ធិកុមារ	4	25	No
NA	ADHOC	សិទ្ធិកុមារ	4	25	No

#### 13.9.2 Political Parties active in the Municipality, District and Khan

Name	Abbr.	Office in District
Cambodian People Party	CPP	Yes
FUNCINPEC Party	FUNCINPEC	Yes
Human Rights Party	HRP	Yes
NRP	NRP	Yes
SAM RAINSY Party	Sam Rainsy Party	Yes

### 13.10 Private Sector Organizations

#### 13.10.1 Registered Companies in 2008, by District

On private sector at commune and/or district level	OMC	Anlong Veng	Banteay Ampil	Chongkal	Samrong	Trapeang Prssath
<b>Businesses and Companies</b>						
Number of registered agricultural enterprises (except family farms)	7	1	0	1	4	1
Number of registered shops, restaurants, transporters and other services	28	14	0	0	14	0
Number of manufacturing companies	35	10	0	0	23	2
Number of registered forestry enterprises	11	2	2	2	3	2
Number of registered mining companies	6	1	1	2	0	2
Number of financial institutions (ACELEDA, Thanakea Phum, AMK)	3	0	0	0	3	0
Number of other commercial institutions	-	n/a	n/a	n/a	n/a	n/a
Estimated number of informal enterprises (not registered)	8	3	n/a	n/a	5	n/a
<b>Employment</b>						
Number of people employed in 2008 by companies or any other enterprises	1,545	100	20	70	1,305	50
<b>Investment</b>						
Amount invested in 2008 by private sector	14,165,714	57,143	0	0	14,095,238	13,333
<b>Markets</b>						
Number of markets, operating at least weekly	7	2	1	1	2	1

**Note:** These data are not comprehensive as different companies and business are registered with different departments and not all departments were able or willing to provide detailed information. The number of informal enterprises reflects a rough estimate, made at provincial level and could not be verified.

**Source:** Unofficially collected at Provincial Level

#### 13.10.2 Farmers in 2008, by District

Credit	OMC	Anlong Veng	Banteay Ampil	Chongkal	Samrong	Trapeang Prssath
Volume of credit provided to farmers in 2008	4,000	1,000	1,000	n/a	n/a	2,000
Number of farmers receiving credit in 2008	587	80	205	n/a	n/a	302
Volume of credit provided to companies in 2008	N/A	n/a	n/a	n/a	n/a	n/a

**Note:** Please note that these data are not necessarily complete or correct. The data are derived from government agencies at provincial and district level which used different recording systems, did not always have complete data or were, sometimes, less than willing to share their data.

**Source:** Unofficially collected at Provincial Level

## **SECTION E: POVERTY DATA**





## 14 Data on Poverty

### 14.1 Predicted Poverty Rates for 2009, by commune

The **Predicted Family Poverty Rate** is based on a statistical model (robust multilevel mixed effect regression) at village level developed by the NCDD M&E Unit and uses CDB data for making an estimate of the predicted poverty rate (this is: *the portion of total families in the district or commune who are expected to be poor*) for the following year using current year data.

The basis for this predicted poverty rate also uses IDPoor (a project of the Ministry of Planning with technical assistance provided by GTZ) data

Commune	2004	2009
Cheung Tien	46.10%	40.10%
Chong Kal	46%	39.20%
Krasang	56%	44.20%
Pongro	43.40%	39.70%

### 14.2 Poverty data from survey

#### 14.2.1 Identification of Poor Households Program (IDPoor)

The Ministry of Planning IDPoor Program has developed standardized Procedures for Identification of Poor Households in rural areas. These Procedures are implemented using a participatory and consultative process by sub-national government structures and community representatives.

The IDPoor Program is managed by the Ministry of Planning (MOP), in cooperation with the Ministry of Interior's Department of Local Administration (DOLA). The program is supported by the Federal Republic of Germany, with technical assistance provided by German Technical Cooperation (GTZ). In 2009, AusAID also provided funding support to the Program.

#### Objective

The IDPoor Program aims to implement the Procedures for Identification of Poor Households in rural areas as widely as possible, in order to provide data on the level of poverty of areas and households that can be used by a large range of institutions and organizations for targeting services and development assistance to poor areas and poor households.

**Coverage:** During 2007, 2008 and 2009 the IDPoor Procedures have been implemented in 18 provinces (with partial or complete coverage), covering a total of around 7000 rural villages. The MOP and a number of NGO partners who are Health Equity Fund Operators have collaborated in collecting this data from different areas.

**Categorization:** Identified poor households are classified under two poverty categories: Poor Level 1 (very poor), and Poor Level 2 (poor). Households are classified based on data collected using a standard questionnaire, together with consideration by villagers of these households' special circumstances.

**Further information:** Please go to the IDPoor Program webpage at [www.mop.gov.kh/Projects/IDPoor/tabid/154/Default.aspx](http://www.mop.gov.kh/Projects/IDPoor/tabid/154/Default.aspx)

Commune	Poor 1 HHs	Poor 2 HHs	Poor 1 HHs	Poor 2 HHs	Total Poor 1&2 HHs	Total HHs in Commune
Cheung Tien	45	156	5.3%	18.2%	23.5%	856
Chong Kal	218	281	14.3%	18.4%	32.6%	1529
Krasang	364	259	32.3%	23.0%	55.2%	1128
Pongro	138	139	14.5%	14.6%	29.0%	954